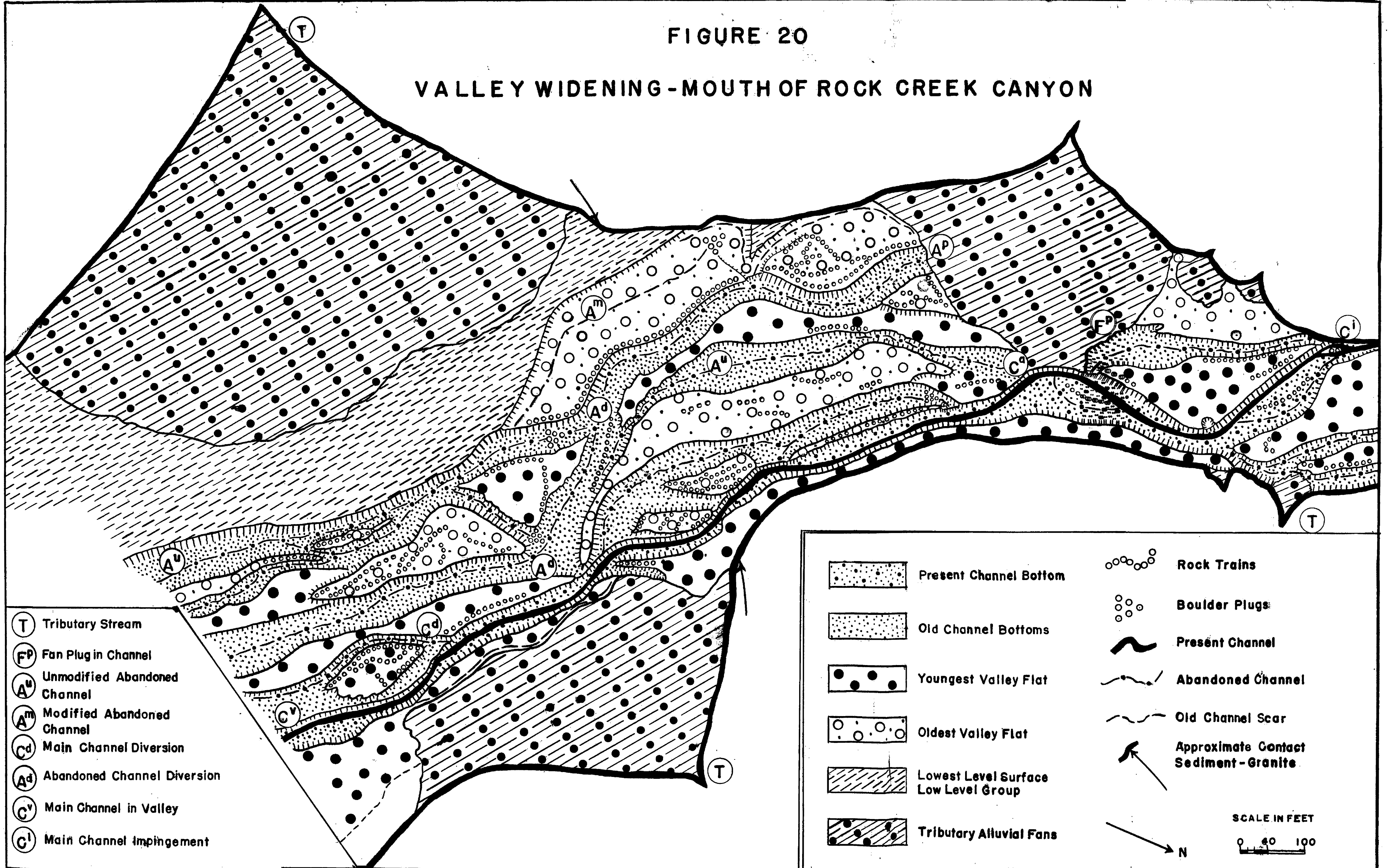


FIGURE 20

VALLEY WIDENING - MOUTH OF ROCK CREEK CANYON



- (T) Tributary Stream
- (FP) Fan Plug in Channel
- (A^u) Unmodified Abandoned Channel
- (A^m) Modified Abandoned Channel
- (C^d) Main Channel Diversion
- (A^d) Abandoned Channel Diversion
- (C^v) Main Channel in Valley
- (C^l) Main Channel Impingement

- [Pattern: Dotted] Present Channel Bottom
 - [Pattern: Stippled] Old Channel Bottoms
 - [Pattern: Large Dots] Youngest Valley Flat
 - [Pattern: Small Circles] Oldest Valley Flat
 - [Pattern: Diagonal Lines] Lowest Level Surface Low Level Group
 - [Pattern: Diagonal Lines with Dots] Tributary Alluvial Fans
 - [Symbol: Chain of Circles] Rock Trains
 - [Symbol: Cluster of Circles] Boulder Plugs
 - [Symbol: Solid Line] Present Channel
 - [Symbol: Dashed Line] Abandoned Channel
 - [Symbol: Dotted Line] Old Channel Scar
 - [Symbol: Arrow] Approximate Contact Sediment - Granite
- SCALE IN FEET
0 40 100
- N