

2005

## Image processing techniques to identify predatory birds in aquacultural settings

Uma Devi Nadimpalli

*Louisiana State University and Agricultural and Mechanical College*

Follow this and additional works at: [https://repository.lsu.edu/gradschool\\_theses](https://repository.lsu.edu/gradschool_theses)



Part of the [Engineering Commons](#)

---

### Recommended Citation

Nadimpalli, Uma Devi, "Image processing techniques to identify predatory birds in aquacultural settings" (2005). *LSU Master's Theses*. 276.

[https://repository.lsu.edu/gradschool\\_theses/276](https://repository.lsu.edu/gradschool_theses/276)

This Thesis is brought to you for free and open access by the Graduate School at LSU Scholarly Repository. It has been accepted for inclusion in LSU Master's Theses by an authorized graduate school editor of LSU Scholarly Repository. For more information, please contact [gradetd@lsu.edu](mailto:gradetd@lsu.edu).

# **IMAGE PROCESSING TECHNIQUES TO IDENTIFY PREDATORY BIRDS IN AQUACULTURAL SETTINGS**

A Thesis  
Submitted to the Graduate Faculty of the  
Louisiana State University and  
Agricultural and Mechanical College  
in partial fulfillment of the  
requirements for the degree of  
Master of Science in Biological and Agricultural Engineering

in

The Department of Biological and Agricultural Engineering

By  
Uma Devi Nadimpalli  
B.E. Andhra University  
Visakhapatnam, India, 2002  
May, 2005

## **ACKNOWLEDGEMENTS**

This thesis would not have been possible without the assistance from many people who gave their support in different ways. First of all, I would like to express my sincere gratitude to my advisors, Dr. Randy Price and Dr. Steven Hall, for their invaluable guidance and encouragement extended through out the study. I also thank Dr. Marybeth Lima and Dr. Chandra Theegala for serving on my graduate committee. I would like to thank my friend, Ms. Pallavi Bomma, and other colleagues and friends at LSU for their constant help and valuable suggestions throughout the study. I would also thank Prof. Mark Claesgens, from the department of Ag Communications for providing me few pictures of birds. I am grateful to my parents, Mr. and Mrs. Rama Raju, and my brother, for the tremendous amount of inspiration and moral support they have given me.

Last but not the least, I would like to gratefully acknowledge the project support from the Department of Biological and Agricultural Engineering, Louisiana State University Agricultural Center.

# TABLE OF CONTENTS

<b>ACKNOWLEDGMENTS</b> .....	ii
<b>LIST OF TABLES</b> .....	v
<b>LIST OF FIGURES</b> .....	vi
<b>ABSTRACT</b> .....	Viii
<b>CHAPTER 1: INTRODUCTION</b> .....	1
<b>CHAPTER 2: BACKGROUND AND LITERATURE REVIEW</b> .....	<b>7</b>
2.1 Autonomous Vehicles.....	7
2.2 Image Processing.....	8
2.3 Autonomous Vehicles Using Image Processing.....	9
2.4 Object Recognition Methods.....	11
2.4.1 Gray Level Thresholding.....	14
2.4.2 Color Thresholding.....	16
2.4.2.1 RGB Thresholding.....	16
2.4.2.2 HSV Thresholding.....	18
2.4.3 Size Threshold.....	20
2.4.4 Dilation.....	21
2.4.5 Artificial Neural Networks.....	22
2.4.6 Template Matching.....	24
2.4.7 Other Methods.....	25
<b>CHAPTER 3: IMPLEMENTATION METHODOLOGY</b> .....	<b>28</b>
3.1 Image Morphology.....	30
3.1.1 Acquire an Input Image.....	31
3.1.2 Convert Input Images to Different Color Spaces.....	32
3.1.3 Remove Horizon Pixels.....	34
3.1.4 Add Required Rows and Columns.....	35
3.1.5 Local Thresholding.....	36
3.1.6 Convert Image to Gray Scale.....	37
3.1.7 Size Threshold.....	37
3.1.8 Remove Rows and Columns.....	39
3.1.9 Dilation.....	39
3.2 Artificial Neural Networks.....	39
3.2.1 Log Sigmoid Function.....	42
3.2.2 ANN Algorithm.....	42
3.3 Template Matching.....	44
3.4 Real Time Algorithm to Control Autonomous Boat.....	47

<b>CHAPTER 4: RESULTS AND DISCUSSION .....</b>	<b>50</b>
4.1 Image Morphology.....	50
4.1.1 Pelicans.....	50
4.1.2 Egrets.....	52
4.1.3 Cormorants.....	52
4.2 Artificial Neural Networks.....	54
4.3 Template Matching .....	55
4.3.1 Pelicans and Egrets.....	56
4.3.2 Cormorants.....	62
 <b>CHAPTER 5: CONCLUSIONS AND RECOMMENDATIONS FOR THE FUTURE.....</b>	 <b>65</b>
 <b>REFERENCES.....</b>	 <b>68</b>
 <b>APPENDIX A IMAGE PROCESSING ALGORITHMS.....</b>	 <b>76</b>
 <b>APPENDIX B PAST RESEARCH ON OBJECT RECOGNITION .....</b>	 <b>96</b>
 <b>APPENDIX C IMAGE PROCESSING TECHNIQUES FOR RECOGNITION OF BIRDS IN AQUACULTURAL SETTINGS.....</b>	 <b>98</b>
 <b>VITA.....</b>	 <b>120</b>

## LIST OF TABLES

4.1 Results obtained by testing image morphology algorithm on all types of images.....	51
4.2 Tabulated results from ANN algorithm.....	55
4.3 Template matching results on pelicans and egrets.....	57
4.4 Template matching results on cormorants.....	62
Ac.1 Image morphology results.....	109
Ac.2 Template matching results.....	113

## LIST OF FIGURES

1.1 Structure of an artificial neural network model.....	5
2.1 Autonomous boat built by LSU Agricultural Center.....	10
2.2 Images having eight and four connected neighborhood pixels.....	12
3.1 Types of images.....	29
3.2 Input image to image morphology algorithm.....	31
3.3 Input images.....	33
3.4 Images after cutting 100 rows of sky pixels.....	35
3.5 Input RGB image after cutting sky pixel rows and addition of required rows and columns.....	36
3.6 Flow chart representing image morphology.....	38
3.7 A generalized model of an artificial neural network.....	40
3.8 Log sigmoid activation function.....	41
3.9 Template matching technique.....	45
3.10 Model of the template matching technique used in the study.....	46
3.11 Flow chart explaining the template matching technique.....	48
3.12 Block diagram for the control of autonomous boat.....	49
4.1 Results from the ANN algorithm.....	54
4.2 Results obtained while testing Type 1 images of pelicans and egrets.....	59
4.3 Results obtained while testing Type 2 images of pelicans and egrets.....	59
4.4 Results obtained while testing Type 3 images of pelicans and egrets.....	60
4.5 Operation time for testing images using template matching.....	61
4.6 Results obtained while testing Type 1 images of cormorants .....	63
4.7 Results obtained while testing Type 2 images of cormorants .....	64

4.8 Results obtained while testing Type 3 images of cormorants.....	64
Ac.1 A generalized model of an artificial neural network.....	105
Ac.2 The template matching technique.....	107
Ac.3 Image morphology on Type 3 images.....	111
Ac.4 Images after testing morphology algorithm on Type 3 images.....	111



## **ABSTRACT**

Bird predation is a major problem in aquaculture. A novel method for dispersing birds is the use of a vehicle that can sense and chase birds. Image recognition software can improve their efficiency in chasing birds. Three recognition techniques were tested to identify birds 1) image morphology 2) artificial neural networks, and 3) template matching have been tested. A study was conducted on three species of birds 1) pelicans, 2) egrets, and 3) cormorants. Images were divided into 3 types 1) Type 1, 2) Type 2, and 3) Type 3 depending upon difficulty to separate from the others in the images. These types were clear, medium clear and unclear respectively. Image morphology resulted in 57.1% to 97.7%, 73.0% to 100%, and 46.1% to 95.5% correct classification rates (CCR) respectively on images of pelicans, cormorants and egrets before size thresholding. The artificial neural network model achieved 100% CCR while testing type 1 images and its classification success ranged from 63.5% to 70.0%, and 57.1% to 67.7% while testing type 2 and type 3 images respectively. The template matching algorithm succeeded in classifying 90%, 80%, and 60% of Type 1, Type 2 and Type 3 images of pelicans and egrets. This technique recognized 80%, 91.7%, and 80% of Type 1, Type 2, and Type 3 images of cormorants.

We developed a real time recognition algorithm that could capture images from a camera, process them, and send output to the autonomous boat in regular intervals of time. Future research will focus on testing the recognition algorithms in natural or aquacultural settings on autonomous boats.

## CHAPTER 1: INTRODUCTION

Louisiana is ranked as one of the biggest fish producers in the United States. Louisiana has a variety of fresh water fisheries and is the largest producer of crawfish and oysters in the entire United States. One-fourth's of the total seafood in the United States comes from Louisiana (Harvey, 1998).

Louisiana is also famous for a wide variety of bird species. Louisiana is called the "pelican state" because of enormous number of pelicans found along the coast (Harvey, 1998). These birds along with other birds such as egrets, herons and cormorants cause much damage to the fish population in a pond. Heavy losses to the aquacultural farmers have been reported due to the bird predation. Bird predation on fish has become a significant concern for aquacultural farmers over the past few years. Significant investment is being made to find ways to save fish from predatory birds.

Scott. (2002) estimated that the aquaculture industry has been investing about \$17 million annually on bird damage and damage prevention. If one cormorant eats 1 lb of fish per day, 2 million birds can have a very large impact if they foraged exclusively on aquaculture facilities. During an average winter in the delta region of Mississippi, losses to the catfish industry alone can be \$5 million dollars in lost fish due to cormorant predation (Glahn et al., 1995, 2000). Littauer et al. (1997) stated that one egret could eat  $\frac{1}{3}$  pound of fish per day, while a great heron can eat  $\frac{2}{3}$  to  $\frac{3}{4}$  pound per day. Though cormorants weigh only 4 pounds, they can consume up to one pound of fish on an average per day (Anonymous, 2004). Pelicans can consume 1 to 3 pounds of fish per day. Stickley et al. (1989) estimated that catfish losses in 1988 amounted to \$3.3 million due

to double-crested cormorants. Thus reducing the predation of birds on fish is the sole way to increase the yield of fish and protect the farming community.

A huge sum of money is being spent to stop these fast breeding predators. Several methods such as shooting and poisoning were ineffective or unfriendly to the environment (Hall et al., 2001). Another way to reduce the predation of birds is to use sonic cannons, but birds may get accustomed to the loud noises over time (Bomford et al., 1990). Also the sonic cannons can cause local sound pollution. Some birds such as the double crested cormorants, American white pelican, brown pelican, and great egret, etc are either protected or endangered species according to the Migratory Bird Treaty Act. (1918) and Endangered Species Act. (1973), and should not be killed. Shooting and feeding these species of birds would be against the federal law.

Since many methods that were used in the past are not effective in reducing the bird predation, there is a need for switching to other approaches of reducing the bird predation. One such approach is the use of autonomous vehicles. A robotic system that emulates a human worker could be the best possible alternative for the automation of agricultural operations. This is a novel concept taking into consideration the recent development of computers, sensor technology, and the application of artificial intelligence (Bulanon et al., 2001). An autonomous robotic system means that the system will be able to work continuously, on its own, without any external help. These vehicles can go to dangerous places, like an atomic reactor, which cannot normally be reached by humans. Also, automation of agricultural tasks makes it cost effective to reduce labor costs, saving time as human power is replaced by machines.

An autonomous vehicle, such as a boat, which can detect birds and disperse them without human intervention would be a good solution to bird predation problem. Software programs and camera systems could be mounted on autonomous vehicles to detect birds. These systems can provide safe, reliable, maintenance-free, and environmentally friendly ways to detect birds.

An overall study of the environmental issues, economic conditions, and other problems led to the development of autonomous devices. Price et al. (2001) designed an autonomous scare boat that chases birds away from the lake. This semi autonomous boat works on solar power, and is also being used to track water quality parameters such as dissolved oxygen, temperature, BOD (biochemical oxygen demand) etc. A machine vision system was developed to recognize birds and worked satisfactorily in the laboratory, but could not cover all situations in the field. Problems with the system included intense sunlight, and many colors variations of the birds as well as the motion of the platform. These problems result in the need for image processing algorithms that will operate under all conditions. Developing image processing algorithms for autonomous boats would help in the accurate detection and tracking of the birds.

The objectives of my study are to

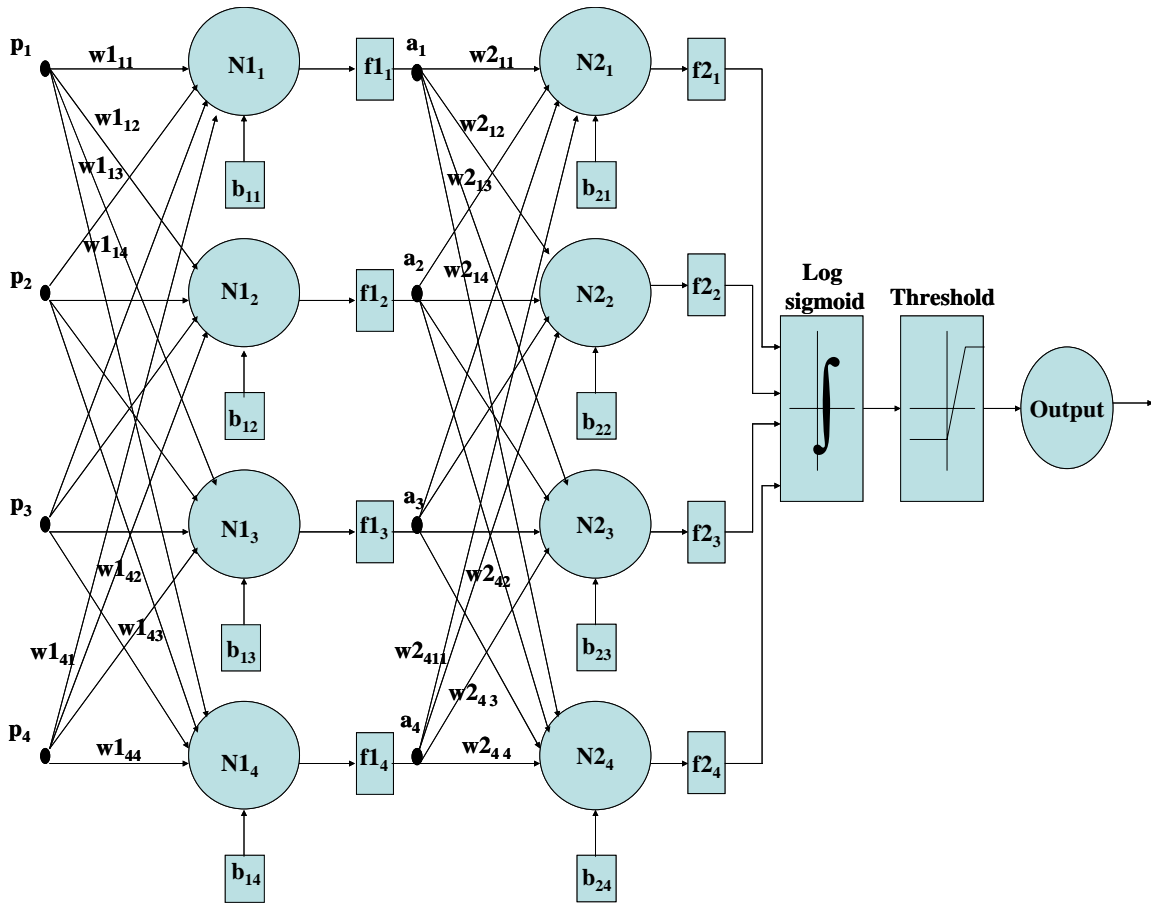
- 1) Recognize the birds using image morphology and artificial neural networks.
- 2) Develop a real time algorithm that could be used by an autonomous boat to disperse birds.

We implemented all image-processing algorithms using the image processing and neural network tool boxes of the popular software MATLAB<sup>®</sup> 6.5 (Math Works, 2005). The main advantage with using this software is spending less time on debugging and

coding the program compared to other programming languages such as 'C', 'C++' and FORTRAN. MATLAB<sup>®</sup> 6.5 has several built in functions in the image processing toolbox which makes the user easy to understand, implement and decode. Three algorithms 1) image morphology, 2) artificial neural networks, and 3) template matching have been designed. Several researchers have worked on object recognition in the past. Chapter 2 provided an overview of these methods used for object recognition in the past.

Image morphology is the step by step method of extracting useful information from the image. Some steps include removing the pixels above the water surface, thresholding based on the intensity, size. Finally, we divide the image into 3 vertical sections and use these sections to locate birds and telling the boat which way to turn. Chapter 3 focuses on detailed description of every step in this algorithm and chapter 4 concentrates on the results and discussions obtained using the algorithm.

A neural network (Figure 1.1) has been developed using the MATLAB<sup>®</sup> 6.5 (Math Works, 2005) neural network toolbox. This network typically consists of many hundreds of processing units called neurons which are wired together in a complex communication network. Each unit or node is a simplified model of a real neuron which fires (sends off a new signal) if it receives a sufficiently strong input signal from the other nodes to which it is connected. The strength of these connections may be varied in order for the network to perform different tasks corresponding to different patterns of node firing activity. This structure is very different from traditional computers. These programs simulate the performance of the brain although the brains network has still not been fully understood (Anonymous, 2003). Details of the algorithm are presented in chapter 3.



**Figure: 1.1. Structure of an artificial neural network model**

Another method that has gained popularity in recent years is object recognition using template matching. This method compares an input image with a standard set of images, known as templates. For bird identification templates are bird parts cut from various pictures. A threshold correlation value is determined and if the correlation between the template and the input image is above the threshold value then the input image is considered to have birds. Accurate recognition of birds requires the use of multiple template images since template matching is not invariant to rotation, size, etc. Template matching is the last object recognition method implemented in this project and is presented in chapter 3.

Correct classification rate (CCR) and misclassification rate (MCR) are calculated for each species of birds using the three algorithms. CCR is birds recognized divided by birds present in the image. MCR is non-birds recognized divided by total objects recognized in the image. Results are tabulated in chapter 4.

In order to meet the second objective, an image processing algorithm has been developed for real time use on the autonomous boat built by Price and Hall (Price, and Hall (2000, 2002), Hall and Price (2003 a, b, c), and Hall et al (2001, 2004, 2005)). Methods used to automate the algorithms in real time have been included in the chapter 3. Field experiments will be done in the future on variety of birds, such as pelicans, egrets, cormorants and herons, which are the major predators. We have included conclusions, and recommendations for future research in chapter 5.

## **CHAPTER 2: BACKGROUND AND LITERATURE REVIEW**

Louisiana is famous for a variety of birds that live in colonies and prey on fish. Famous among them are the double crested cormorants, pelicans, egrets that hunt individually or in flocks. These birds dive deep, swim under the water, and are capable of catching many fish at a time. Louisiana aquacultural farms are suffering from rapid decrease of fish due to these birds. Killing these birds would not be a good idea as some of these birds come under the category of endangered or protected species according to endangered species act of 1973 and the migratory bird treaty act of 1918. Killing or poisoning the birds would also pollute the lakes. Preventing birds from consuming fish may be way of protecting them.

Researchers implemented several different methods such as the use of sonic cannons and nets in the past but they proved ineffective in reducing bird predation, as these birds got accustomed to such sounds. Dispersing the birds would require some kind of recognition software and an autonomous vehicle on which the software designed to detect birds can be mounted and used to chase birds.

### **2.1 Autonomous Vehicles**

The past few decades have seen the development of autonomous vehicles to serve different purposes. Autonomous vehicles are being developed that can operate in dangerous places such as the atomic reactors (Anonymous, 2002). Griepentrog et al. (2003) developed autonomous vehicle for agricultural field operations such as weeding and spraying. Simpson et al. (2003) developed an unmanned aerial vehicle (UAV) that captures remote sensed imagery for precision agriculture. This system captures imagery



from various locations with ease. Shallow Water Autonomous Mine Sweeping Initiation (SWAMS) developed an automatic detection and classification of mines in shallow water. Blackmore et al. (2002) have developed an autonomous tractor for successful mechanical weeding and field scouting. According to Graves, (2004) Automatic Milking Systems (AMS) are being used in many parts of Europe for milking cows with minimal oversight or intervention. Components included several sensors such as cow identification, udder/teat location, teat cleanliness and milk flow sensors. Other components include milking box, power gates, feeding station, udder cleaning, milking system, milk cooling, and storage. Seipelt et al. (2003) developed a new calf feeder that solves the problems faced by normal calf feeders such as hygiene, health control and accuracy of milk location. The Calf feeder has automatic rinsing system and several other components to indicate the health of the calves.

While some researchers used autonomous vehicles exclusively for object recognition, other researchers concentrated on image processing techniques.

New challenges in the present application include water, and wind currents and movement of birds, and the vehicle. In order to seek and track birds, object recognition using image processing might be considered.

## **2.2 Image Processing**

Several researchers have used image-processing techniques for object recognition. A series of morphological operations were implemented by Casasent et al. (2001) to produce only an image of nutmeat from an image containing a number of nuts. Ruiz et al. (1996) used color segmentation to locate and remove the long stems attached to mechanically harvested oranges. Their color segmentation algorithm had 100% success

in discriminating the destemmed and the stemmed oranges. However, the algorithm misclassified some pixels of the stem-calyx as background. El-Faki et al. (2000), used color machine vision for the detection of weeds in wheat and soybean fields. They used a color index for both the preprocessing and statistical discriminant analysis (DA) for weed detection. Their experiments worked well with statistical discriminant analysis compared to the two neural networks they trained. Aitkenhead et al. (2003) used a simple method to discriminate plants and weeds using plant size as a parameter. They also trained a neural network to discriminate plants and weeds. Rapid identification of Africanized honeybees was done by used Batra (1998) using image analysis. Hansen et al. (1997) evaluated wound status of a porcine animal model, using color image processing. In their experiment, the differences in calibrated hue between injured and noninjured skin provided a repeatable differentiation of wound severity for situations when the time of injury was known.

Although researchers concentrated on both autonomous vehicles and image processing on an individual basis, few researchers have concentrated on autonomous vehicles that use image processing.

### **2.3 Autonomous Vehicles Using Image Processing**

The National Institute of Science and Technology (NIST) designed an intelligent machine that drives on the road at 55 mph. This machine tracks the painted stripes on the road by using edge detection algorithm (Bostelman, 2002). Kise et al. (2002) are developing an obstacle detection system for autonomous tractor with steering controller. Morimoto et al. (2002) developed an obstacle detection system based on HSV image processing. This autonomous vehicle detects the obstacles in its path and avoids the

vehicle from collision. Nishiwaki et al. (2002) developed an autonomous vehicle that used vision system for estimating plant positions. They calculated yaw angle and vehicle speed using plant positions estimated using their algorithm.

Most of the research done on autonomous vehicles and image processing concentrated on plants and its products. Though a number of autonomous vehicles that operate on ground and in air were developed, very little research has been done on autonomous vehicles that operate on water. No published research has been done on bird recognition and the methodologies to scare birds. However, the Biological and Agricultural Engineering Department at the Louisiana State University developed a semi-autonomous boat (Fig 2.1) for chasing birds in the lake. One major advantage of this semi-autonomous boat is that it works on solar power. The power saved during the daytime can be used by the boat later in the absence of solar power.



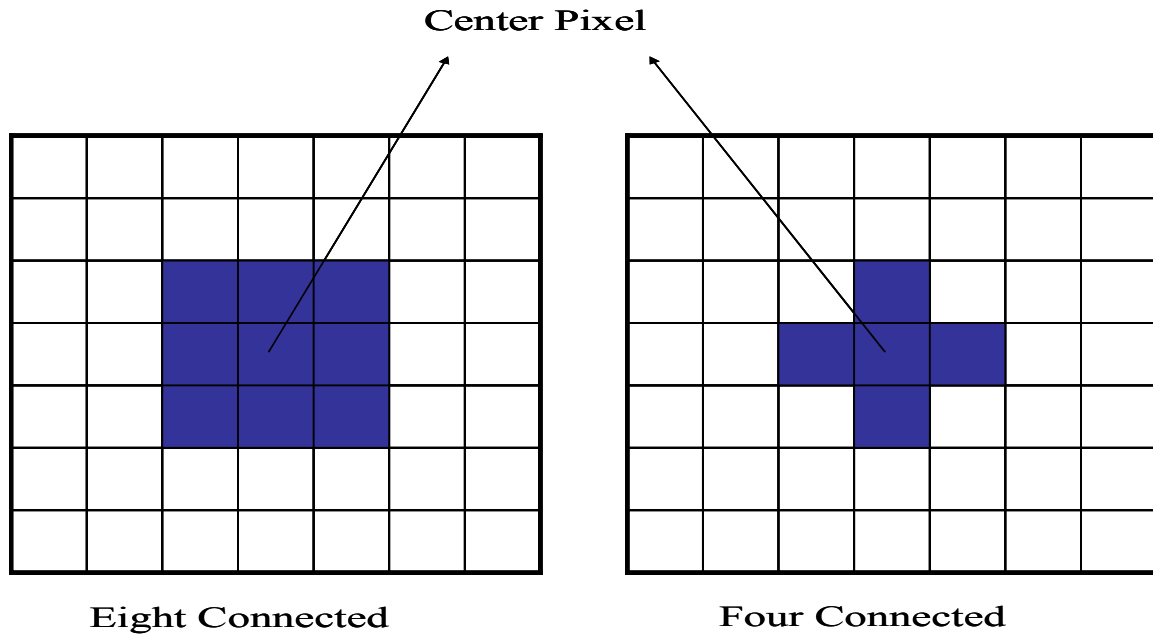
**Fig: 2.1. Autonomous boat built by LSU Agricultural Center**

Price and Hall (Price, and Hall (2000, 2002), Hall and Price (2003 a, b, c), and Hall et al (2001, 2004, 2005)) designed a semi-autonomous boat to reduce the bird predation in aquacultural ponds. They used a machine vision system designed by Lego Vision Command <sup>TM</sup> to identify birds and make the boat chase the birds. Random motion worked well but chasing birds was a challenge. The software they used breaks the image into sections using a predetermined grid pattern. Later it trains each section of the image to detect light, motion or color of the bird that would help in the recognition process. However, this machine vision system encountered several problems. It worked well in the laboratory, but when taken outside it faced some problems due to the brightness with intense sunlight. The machine vision system also had problems calibrating to the white color of the birds. Therefore, developing image-processing algorithms that work under all conditions could be the best solution. These algorithms may also reduce unnecessary wandering of the boat even when no birds are present, which saves on solar power that can be used later during cloudy or partly sunny conditions. Object recognition algorithms using built in functions may be the cheapest way. There are different types of object recognition and researchers have implemented several methods in the past.

## **2.4 Object Recognition Methods**

Recognition is a process of separating the objects of interest from the background. Recognition becomes simple if the birds are distinct from the surroundings in terms of color, texture etc. Perhaps the cheapest and easiest way could be the use of a digital camera to take pictures of the birds and software to recognize the birds in the captured image. However, in the past very few efforts have been made in the direction of recognizing birds in a given image. Several methods have been implemented in the past

to recognize or discriminate objects such as weeds and plants in an image, which can be used for recognizing birds. Motion is another challenge in object recognition.



**Fig: 2.2. Images having eight and four connected neighborhood pixels**

Majority of the segmentation procedures developed in the past used CCD (Charge Couple Devices) to capture images and used local or global (shape) techniques for recognition. Local approaches use only the values of the neighborhood pixels to calculate the value of the center pixel. Depending on the application, we consider four or eight neighborhood pixels (Figure 2.2). Typically, we use 8-connectedness when looking for objects and 4-connectedness when analyzing the background (Lacey et al., 2004). Local approaches that used intensity or color pixel classification were successful only if there was a difference in intensity or color between the object and the background. Local techniques are relatively simple and fast compared to global approaches and can be considered for real time applications (Jimenez et al., 2000). Local thresholding uses many threshold values through out the image. In a global approach, values of all the pixels in an

image determine the value of a required pixel (Lacey et al., 2004). A global thresholding technique segments an image with a single threshold corresponding to the valley point in the bimodal histogram (Brink, 1992, Yan et al., 1996). Global approaches, such as shape analysis, were independent of changes in intensity, hue, etc, but these algorithms were very time consuming and sensitive to camera position and focusing. Global approaches had many limitations while detecting weeds in a field (El-Faki et al., 2000). In a research done by Guyer et al. (1986), as stated by El-Faki et al. (2000), recognition of weeds based on leaf shape became difficult when the leaves overlapped, leaf orientation varied, camera-target distance varied and leaves moved in the wind, which caused blurring of the images.

We developed three different methods 1) image morphology, 2) artificial neural networks, and 3) template matching. We define image morphology as a systematic procedure for extracting useful information from the image. The basic morphological operation is thresholding on gray or color images. Further size thresholding on such images would increase the CCR (correct classification rate). Although no published research has been done in the past on bird recognition, researchers worked on similar objects such as the fruits, weeds, vegetables etc under controlled and uncontrolled lighting conditions. However, the same basic principles apply whether the object is bird or fruit except motion. Therefore, we apply the research done in the past for bird recognition. In the present case, we performed bird recognition under uncontrolled lighting conditions. As different methods have been implemented for bird recognition, we divide the literature review will be divided into parts based on the methods.

The basic step in any object recognition is thresholding. Different researchers follow different methods for thresholding though the other morphological operations may be the same. Following are the different methods of thresholding an image followed by other morphological operations implemented by the researcher.

#### 2.4.1 Gray Level Thresholding

This is the simplest and the oldest of all thresholding processes. Hence we used GRAY color space for the study. The advantages of the gray level thresholding are that the algorithms are simple and easy to implement in real time. Xinwen et al. (2002) measured the geometric features of insect specimens using image processing. In this, preprocessing the image included

- 1) Transforming the colored image to gray level image, cropping the area of interest, using the median filter to smooth the image, widen the pixel gray level distribution.
- 2) Threshold input image.
- 3) Extract features such as the region area, boundary perimeter, number of holes etc from the image.
- 4) Recognize three insect specimens using these features.

Batra (1998) used image analysis for rapid identification of Africanized honeybees. Tao et al. (2001) used X-ray imaging to detect the foreign objects in deboned meat. Uneven thickness of the meat resulted in the change of background that in turn affected global thresholding. Therefore, they used a local threshold method called adaptive thresholding. Their algorithm effectively detected foreign inclusions at all locations of the image except for locations near the chicken filet's periphery.

Casasent et al. (2001) implemented a series of morphological operations to produce only an image of nutmeat from an image containing a number of nuts. They used thresholding, blob coloring and segmentation operations. Algorithm classified 99.3% of all nuts successfully. Two errors known as under segmentation and over segmentation occurred during the segmentation process. 0.25 % of the good nuts were slightly under segmented and 0.7 % of the infested nuts were over segmented after nutmeat extraction. Kim et al. (2001) used two scanning methods to detect pinholes in almonds. Their algorithm performed better on scanned film images than on line-scanned images and it detected both insect-damage region and germ region. This method produced 81 % correct recognition on scanned film images and 65% correct recognition on line-scanned images. False positives were 1 % on scanned film images and less than 12 % on line-scanned images.

Neethirajan et al. (2004) studied airflow paths along the vertical and horizontal directions in wheat samples using X-ray CT (computer tomography) scan images. They used images of hard red winter wheat at 14% moisture content as a sample. Local threshold was used instead of the global technique since the density of the grain varied and which resulted in the change of background in the image. Later the image was subjected to thinning and segmentation. A thinning algorithm strips away the outermost layers of a figure until only a connected pixel width skeleton remains (Xu et al., 2004). The obtained skeleton image was a single stranded subset of an original binary image. Further processing and blob coloring the image revealed a 9% difference in airflow path area between horizontal to vertical directions in wheat bulk.



Gray level thresholding suffers from serious drawback, "Intensity Variation", because of which the intensity varies from time to time. Threshold values in gray level thresholding are fixed using only one parameter i.e. intensity. Therefore, successful segmentation using gray level thresholding requires change of threshold values periodically. This limitation led to the use of other thresholding techniques RGB, HSV thresholding commonly known as color thresholding.

## 2.4.2 Color Thresholding

Color thresholding is the process of separating the objects in an image based on the color values such as RGB, and HSV. A major advantage of color thresholding is that threshold can be fixed based on more than one parameter. This reduces noise in the output image and results in a higher classification rate (CCR). Color thresholding can be implemented using different color spaces such as RGB, HSV, HSI, La\*b\* etc. In the present study, we implemented two-color thresholding techniques using RGB and HSV color spaces.

### 2.4.2.1 RGB Thresholding

RGB represents the red, green and the blue color components of the pixels in an image. Each color ranges from 0-255. Color pictures taken by the camera frequently use RGB color space. Hence we included this color model for the study. We fix threshold values based on all the three-color components or using only some color components. A simple output is a bit map image which consists of only two gray levels (black and white), in which white generally represents the foreground pixels or the pixels of interest and black represents the background pixels.

Sometimes intensity information is not sufficient with natural images under varying light conditions. Bulanon et al. (2002) developed a segmentation algorithm to segment the Fuji apples based on the red color difference among the objects in the image. Thresholding process was used to segment the images under different lightening conditions. They noticed that threshold calculated from the luminance histogram using optimal thresholding method was not effective in recognizing Fuji apple while the threshold selected from color difference of red histogram was effective in recognizing Fuji apple. In their experiment, the maximum gray level variance of the red color difference between the fruit and the background determined the optimal threshold. Results indicated that threshold values varied under different lightening conditions. Ruiz et al. (1996) used color segmentation to locate and remove the long stems attached to mechanically harvested oranges. Their color segmentation algorithm had 100% success in discriminating the de-stemmed and the stemmed oranges. However, it misclassified some pixels of the stem-calyx as background. Leemans et al. (1999) proposed a method based on Bayesian classification to identify the defects on Jonagold apples. Method used color frequency distributions of the healthy tissue and the defects to estimate the distribution of each class. Most defects segmented bitter pit, fungi attack, scar tissue, frost damages, bruises, insect attack and scab.

Using the RGB values of the pixels directly would sometimes result in erroneous calculations because the RGB values are sensitive to illumination. Therefore, it is better to use relative color indices or other color spaces (such as HSI,  $Y_C R_C B_C$ ), which are less sensitive to illumination or other factors affecting the RGB gray levels. Color indices are the combination of RGB values through simple arithmetic operations like  $R/(R+G+B)$

(Campbell, 1994).El-Faki et al. (2000) used color machine vision to detect weeds. They used color index for both preprocessing and statistical discriminant analysis (DA) for the weed detection. Their experiments worked well with the statistical discriminant analysis compared to the two neural networks they trained. A color object recognition scheme has been developed in which the extraction of color objects was based on an aggregation function for watersheds using local and global criteria (Lezoray et al., 2003).

#### 2.4.2.2 HSV Thresholding

The HSV model is similar to the way the humans perceive colors. This color space separates intensity and color information. HSV represents the hue, saturation and the value/intensity of the pixels in an image. Hue represents the dominant wavelength and ranges from 0 to 360 degrees. Saturation represents the purity of color and is represented in terms of percentage. The lower the saturation the more grey it is and more faded it appears. Value/Intensity represents the brightness of the color and is represented as the percentage. The objects of similar intensities but different hues can be distinguished because of the addition of new variables hue and saturation. In HSV thresholding, three threshold values can be fixed making the thresholding process more efficient. HSV is superior to RGB in terms of “how humans perceive colors” According to Wang et al. (2003), hue is invariant to certain types of highlights, shadings and shadows. Due to this reason we included the HSV color model for the study.

Sural et al. (2002) used a segmentation algorithm to decompose an image into useful parts. They observed that RGB thresholding blurs the distinction between two visually separable colors by changing the brightness. HSV color space on the other hand can determine the intensity and shade variations and retains pixel information. Liu et al.

(2001) developed a vision based stop sign detection system. They divided their research into two modules: Detection mode and recognition mode. The detection module was implemented using color thresholding in HSV color space. A neural network was designed for recognition mode. Hansen et al. (1997) evaluated the wound status of a porcine animal model using color image processing. In their experiment, the differences in calibrated hue between injured and noninjured skin provided a repeatable differentiation of wound severity for situations when they had a track of time of injury. This color analysis distinguished mild, moderate, and severe injuries within 30 minutes after the application of the injury. They were not able to distinguish the severity of wounds in the first few days but when the wounds were five to seven days old, the correlation re-emerged. They concluded that their technique could be adapted for assessing and tracking wound severity in humans in a clinical setting.

Computer vision based weed identification under field conditions using controlled lighting was developed by Hemming et al. (2001). For each single object, morphological and color features were calculated. Their experiments showed that color features could help in increasing the classification accuracy. They also used color for segmenting plants and the soil. Hatem et al. (2003) used color for cartilage and bone segmentation in vertebra images for grading beef. Hue value was used effectively in segmenting the cartilage areas and  $a^*$  in the CIE Lab was used in segmenting the bone areas. Final segmented object was obtained after applying other morphological operations such as hole-filling, size thresholding, erosion and dilation. A fast and robust color vision for Monash Humanoid was developed by Price et al. (2000) using a simple, fast, modified HSV color model. The HSV model was devised since it is invariant to lighting conditions

and aids in the process of designing accurate color filter models. They expanded the modified HSV model beyond the normal 360 degrees of hue so that all colors can be viewed in a continuous distribution. Their color model proved reliable in separation and filtering of colors within images. In a research done by Lee et al. (2001), hue, saturation and intensity values were used in the thresholding process followed by masking, noise removal and neural network that led to the extraction of lean tissue from the carcass beef.

The next step in any morphological operation is the removal of extra noise. Researchers used different methods to reduce extra noise and size thresholding is one of the best methods available for noise removal.

### 2.4.3 Size Threshold

Size is one of the parameters used to remove extra noise. Size thresholding measures the size of each object (either 4 connected or 8 connected neighbors) and removes the objects based on the threshold (size). Threshold in this case is the number of pixels in an object. We retain only the objects whose size is greater than the defined threshold and remove other objects. Aitkenhead et al. (2003) in their image processing used noise removal to remove any pixel that has less than three neighbors with values 255. Hemming et al. (2001) implemented weed identification under field conditions using controlled lighting. Different morphological features including the size and color of each object were calculated and used to discriminate plants and soil. Hatem et al.(2003) used size thresholding to remove objects bigger than 10,000 and 15,000 pixels respectively after thresholding using HSL and  $La^*b^*$  color spaces and filling the holes. Size thresholding is generally followed by other morphological operations such as dilation, which polishes the output image. Image after undergoing size thresholding may not look

like a solid object as objects may still contain holes. We generally remove such holes by changing those pixels value to foreground. This process is called dilation or filling of holes.

#### 2.4.4 Dilation

Dilation is a process of filling the holes in an image using the region-filling algorithm. This method gathers all the pixels of an object and represents it as a single object. Dilation is important since it makes the output image contain few objects. This in turn helps us in estimating the number of objects in the output image correctly. Dilation operation is one of the morphological operations and is implemented after the basic thresholding and noise removal. Very few researchers have implemented this algorithm as it only polishes the output image in order to make it clear and is not considered very important in object recognition algorithms. Previous research on this method is not included as this has not been given much importance and only few researchers have implemented this method. Casent, (1992) identified each of multiple objects in a scene with object distortions and background clutter present. They used a series of morphological operations. Various processing techniques used in order are hit-miss rank-order and erosion/dilation morphological filtering, distortion-invariant filtering, feature extraction, and neural net classification. Hatem et al. (2003) implemented several set of morphological operations in which hole filling was done after thresholding. Thresholding was done using both HSL and La\*b\*. Kapur, (1997), used dilation algorithm in the face detection project. Two processed were implemented 1) detecting regions that are likely to contain human skin in the color image 2) extracting information from these regions that might indicate the location of a face in the image. The skin detection was performed

using color and texture information. The face detection was performed on a grayscale image containing only the detected skin areas. A combination of thresholding and mathematical morphology were used to extract object features that would indicate the presence of a face. The objects having holes were expanded using dilation and this binary image is then multiplied by the positive labeled image. One technique for efficient object recognition is the use of ANN (artificial neural network). Image processing and ANN toolboxes of MATLAB<sup>®</sup> 6.5 (Math Works, 2005) were used together. Image processing and ANN have been linked together from a long time because of the ability of the ANN to perform image-processing algorithms efficiently.

#### 2.4.5 Artificial Neural Networks

Artificial neural networks have gained a wide range of popularity in the past few years. They learn from the training algorithms and are inexplicable in terms of their working. The analysis of neural networks is very difficult and is still a mystery. They typically consist of many hundreds of simple processing units called neurons, which are wired together in a complex communication network. Each unit or node is a simplified model of a real neuron which fires (sends off a new signal) if it receives a sufficiently strong input signal from the other nodes to which it is connected. The strength of these connections may be varied in order for the network to perform different tasks corresponding to different patterns of node firing activity. This structure is very different from traditional computers. These programs simulate the performance of the brains to a little extent since the brains network has still not been understood fully (Anonymous, 2003). The decision-making capability of neural networks is very good and has been proved useful in many research applications. This makes the ANN one of the best

methods for object recognition. Even the neural network requires input images that were pre processed by using methods such as thresholding using RGB, HSV etc. Pre processing makes the recognition easy as it removes all the unwanted pixels .Therefore it reduces the time the algorithm spends on working on these pixels.

Aitkenhead et al. (2003) used a simple method to discriminate the plants and the weeds using plant size as a parameter. They also trained a neural network to discriminate the plants and the weeds. Pre-processing the image resulted in removal of noise pixels the presence of which would have slowed down the recognition process. Image was split into 16 grids and only the grids, which were neither overly bare nor overly crowded, were fed as input to the neural network. They could not implement larger arrays due to the limited array size of the programming language. Over 75% of the crop and weeds were successfully segmented. The main advantage with the neural networks is that it is flexible and it does not require any human intervention after the initial training session. Bakircioglu et al. (1998) implemented automatic target detection where ANN's were used to detect the targets in the presences of clutter. This image processing had applications in the military where they used such software in the Synthetic Aperture Radars to detect the presence of targets. They trained windows having only clutter and windows having both clutter and the targets. They tested images by adding noise. Gliever et al. (2001) implemented a weed detection algorithm using a neural network-based computational engine for a robotic weed control system to discriminate cotton and weeds. 93% of weeds were correctly mapped for herbicide application and 91% of cotton plants were correctly mapped for no herbicide treatment. Successful sorting of apples based on surface quality conditions was implemented using back propagation neural



networks by Kavdir et al. (2002). The resolution of the images were reduced from 480\*640 to 60\*80 taking into consideration the feasibility of training the neural network. Another method that has gained popularity in the recent years is the object recognition using template matching.

#### 2.4.6 Template Matching

Template matching is a method of comparing an input image with a standard set of images known as templates. Templates are bird parts cut from various pictures. Normal correlation between the input image and each template image is calculated. According to Gonzalez et al. (2003), the correlation is

$$f(x, y) \circ h(x, y) = \frac{1}{MN} \sum_{m=0}^{M-1} \sum_{n=0}^{N-1} f^*(m, n)h(x + m, y + n)$$

Where  $f(x, y)$  and  $h(x, y)$  are two images of size  $M \times N$  and  $f^*$  is the complex conjugate of  $f$ . A threshold correlation value is fixed and if the correlation between the input image and any template is above the threshold value, the input image has bird(s). Accurate recognition of birds requires the use of more number of template images as template matching is not invariant to rotation, size etc. Nishiwaki et al. (2001) used machine vision to recognize the crop positions using template matching. Cruvinel et al. (2002) developed an automated method for classification of oranges based on correlation analysis in frequency domain. In this study, correlation analysis technique was developed by means of correlation theorem in the Fourier domain. This method had some shortcomings when recognizing oranges when the trees were shaken by the winds or by shifts of the video camera by as little as 1 cm. The percentage error varied approximately

from zero to 2%. Chang et al. (2000) developed a template-matching algorithm in order to match part of the image corresponding to the skin region and the template face. Vehicle (car) recognition using camera as a sensor to recognize has been developed by Thiang et al. (2001). The three main stages in their process were object detection, object segmentation and matching. They conducted the experiment on various types of vehicles during daylight and at night. Results showed a good similarity level, of about 0.9 to 0.95 during daylight and 0.8 to 0.85 at night.

A major problem for airplanes is the bird strike. Researchers have used radar and laser in the past to detect the presence of birds in the vicinity of air planes. Other methods that are not popular but can be implemented for object recognition are shape matching and textural analysis. However, little research has been done on shape recognition and texture analysis, some of the previous works will be discussed in the following section.

#### 2.4.7 Other Methods

Birds such as geese obstruct the air traffic during take off and arrival of air planes. Short et al. 1999 suggested new devices that use infrared, radar, low frequency sounds, and laser devices to detect birds to reduce the bird hazards to aircraft. Klein et al. 2003 developed a millimeter-wave (MMW) radar for dedicated bird detection at airports and air fields. The research and development department of transport Canada has been planning to develop and evaluate a three dimensional pulse Doppler radar to provide real time information to air traffic devices and flight crews. Their project involves the optimization of an Environmental Situational Assessment Radar (ESAR) to detect birds within 5nm of the radar. Their radar would also determine the arrival and departure of birds and provide information for real time warning. Bruder et al. 1997 concluded that the incorporation of

digital time lapse display can provide for detection and monitoring of bird activity in near real time.

Hoshimoto et al. (2002) proposed the utilization of a popular digital camera for color evaluation and quantification of color changes with the growth of grape tree. The shape of grape leaf blade has also been quantified because the morphological information such as width of petiolar sinus and length of sinus reflects the grape tree vigor. Liu et al. (2000) developed a machine vision algorithm to measure the whiteness of corn kernel. They used  $YC_R C_B$  instead of RGB color space to overcome the problems of varying RGB component values with varying illumination. Algorithms were developed to extract the leaf boundary of selected vegetable seedlings by Chi et al. (2002). They fit the leaf boundary with Bezier curves, and later derived the geometric descriptors of the leaf shape. Terawaki et al. (2002) discussed an algorithm for distinguishing sugar beet and the weeds. The distinction between the sugar beet and the weeds, the green amaranth, the wild buckwheat and the field horsetail, were tested using the shape characteristics of the leaf and the angle of the leaf tip portion based on the image processing technique. The results of the distinction indicated that the correct distinction rate of the sugar beet was 87.2% and the error rate was less than 8%. Aitkenhead et al. (2003) used image processing methodology that involved the use of a simple morphological characteristic measurement of leaf shape ( $\text{perimeter}^2/\text{area}$ ) which had varying effectiveness in discriminating between plants and the weeds. Variation in their case was also dependent on plant size.

Soren et al. (1996) proved that addition of spatial attributes such as image texture improved the segmentation process in most areas where there were differences in texture

between classes in the image. Results from this experiment showed that texture could have strong positive effects when using threshold-based segmentations than in minimum size based segmentations. Segmentations controlled by minimum size criteria produced higher accuracies than threshold based algorithms. The test sites included a simulated forest, natural vegetation area and a mixed–use suburban area.

Even though, most of the possible object recognition methodologies have been discussed in this chapter, only few of them will be implemented in my project. Object (bird) recognition algorithms, my first objective, will be implemented using image morphology, artificial neural networks and template matching. Bird recognition will be followed by my second objective, testing algorithms in real time on autonomous boat built by the Price and Hall team (Price, and Hall (2000, 2002), Hall and Price (2003 a, b, c), and Hall et al (2001, 2004, 2005)). Details of birds, autonomous boat and implementation methodology of different bird recognition algorithms will be discussed in the following chapters.

## **CHAPTER 3: IMPLEMENTATION METHODOLOGY**

Pictures of birds were taken by the camera mounted on a semi-autonomous boat (Price, and Hall (2000, 2002), Hall and Price (2003 a, b, c), and Hall et al (2001, 2004, 2005)), some obtained from the internet, and some acquired locally. Most images were 640 by 480 pixels so that an engineering compromise can be obtained between processing time of algorithms and clarity retention of input images. All images were selected in such a way that aspect ratio had been preserved. Aspect ratio is the ratio of the width of image to the height of image. Failure to preserve aspect ratio might result in a distorted image. All images have been divided into 3 sections: a) Type 1, b) Type 2, and c) Type 3 images based on the level of difficulty in recognizing birds. Three species of birds namely pelicans, egrets, and cormorants were tested. In clear images birds look the same as they look in-situ and there was no blurring of images due to movement of the camera or birds when the photos were taken. A clear distinction between birds and background was found. Type 2 images were not so clear and distinction between birds and background was less. Few Type 3 images had birds that were as small as 100 pixels in size. However most the images were divided based on the quality of images. Figure 3.1 represents all kinds of input images. Type 3 images were not clear due to several reasons such as blurring of images, poor quality camera, and movement of camera while shooting birds. These were classified as unclear images since size thresholding on these images would not classify them as birds. They may result in erroneous classification of birds. Images that do not belong to Type 1 (clear) and Type 3 (very unclear) were considered as Type 2 (medium clear) images.



**Fig: 3.1. Types of images a) Type 1 image b) Type 2 image c) Type 3 image**

Images were tested for the presence or absence of birds separately on each species, each type, and each recognition method. The training and testing of all the algorithms were done on an Intel® Pentium® 4 CPU with a 3.0 GHz processor, 504 MB of RAM, and a 150 GB hard drive. Algorithms have been tested on 10 images of each type. Correct classification rate (CCR) and misclassification rate (MCR) have been calculated by running image morphology algorithm on each section of images using GRAY, RGB, and HSV color models. Input images have been converted to gray level, RGB, and HSV using MATLAB software. For convenience sake they are referred to as gray level, RGB, and HSV images in this study. Size threshold is the method of removing objects of smaller size and is capable of reducing misclassification rate. Therefore

performance of each color model before and after size threshold has also been tabulated.

CCR and MCR for image morphology algorithm are formulated as

Correct Classification Rate (CCR) = birds recognized/birds present

Misclassification Rate (MCR) = non-birds recognized/total objects recognized

### **3.1 Image Morphology**

Image morphology is the method of extracting useful information from an image using a step by step procedure. Several steps have been implemented for the study. They are:

- 1) Acquire an input image.
- 2) Convert input image to different color spaces.
- 3) Remove sky pixels in the image.
- 4) Add required rows and columns (of value 0 i.e. black pixels).
- 5) Read image one pixel by pixel to locate pixel that crosses threshold1.
- 6) If pixel crosses threshold 1, define window and search for pixels that cross threshold 2 within the window.
- 7) Repeat this process till last pixel in the input image is read.
- 8) Convert image into gray level.
- 9) Perform size threshold to remove objects of smaller size.
- 10) Remove the previously added rows and cols. Add black pixels in place of previously removed rows of horizon pixels above the water surface. This step results in the accurate determination of the location of birds in the image.
- 11) Dilation or filling holes in the objects.
- 12) Display output image.

If a  $[m, n]$  is a pixel of image  $a$  at location  $m^{\text{th}}$  row and  $n^{\text{th}}$  columns basic thresholding operation is defined as

If a  $[m, n] > \text{Th}$              $a [m, n] = 1$  foreground  
Else                                 $a [m, n] = 0$  Back ground

Th is a threshold value, manually fixed to differentiate foreground and background pixels.

### 3.1.1 Acquire an Input Image

We used pictures of birds taken by the semi-autonomous boat (Price, and Hall (2000, 2002), Hall and Price (2003 a, b, c), and Hall et al (2001, 2004, 2005)), some obtained from internet and some acquired locally. Figure 3.2 represents an input image acquired from the autonomous boat.



**Figure: 3.2. Input image to image morphology algorithm**



All input images are in JPEG (Joint Photographic Express Group) format. JPEG is a standard for photographic image compression and it takes advantages of the limitations of the human vision system to achieve high rates of compression. JPEG format has a feature, lossy compression, which allows the user to set the desired level of quality or compression by eliminating redundant or unnecessary information (Anonymous, 2002).

Three species of predatory birds 1) pelicans, 2) egrets, and 3) cormorants have been tested. Images of each species of birds are divided into 1) Type 1, 2) Type 2, and 3) Type 3 based on the clarity of images.

### 3.1.2 Convert Input Images to Different Color Spaces

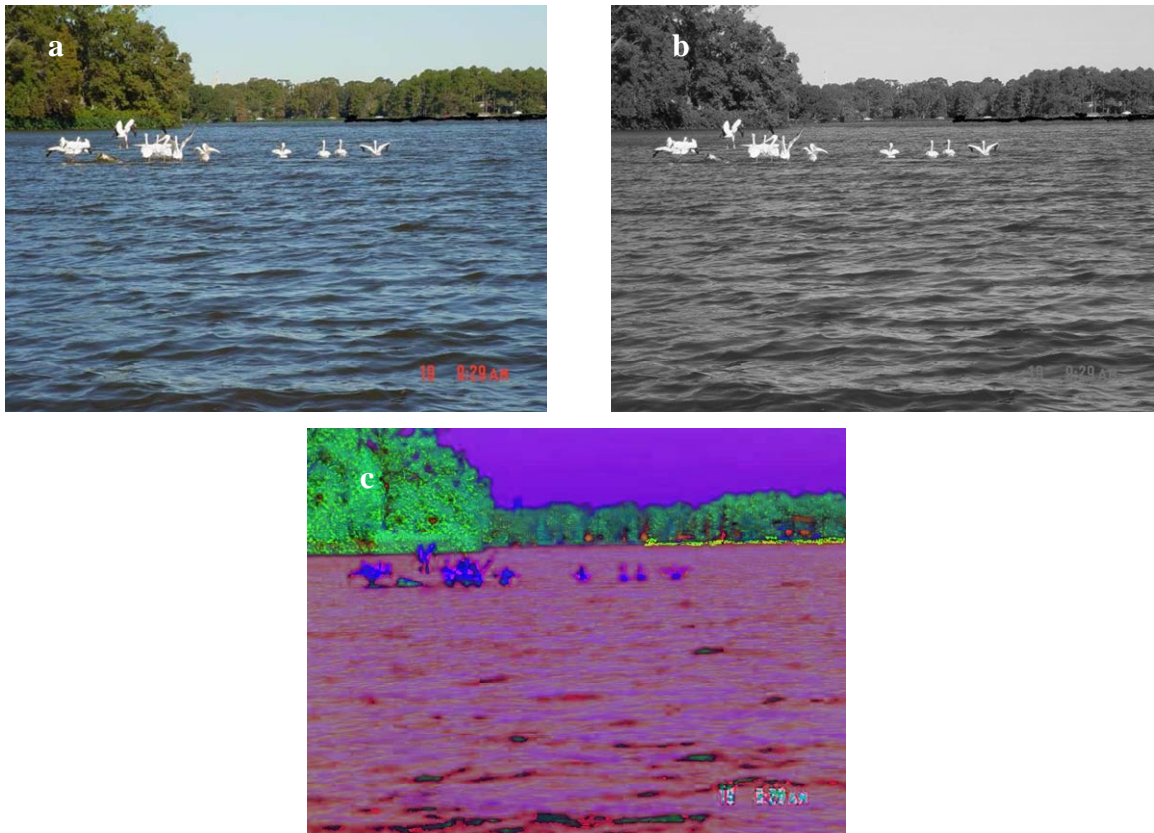
Three color modes being used in this study are

- 1) GRAY
- 2) RGB
- 3) HSV

Input images converted to gray scale using GRAY color model are called gray level images. Similar taxonomy applies to RGB and HSV images. Each pixel in a gray scale image represents intensity of the pixel. Intensity value of pixels may change with varying sunlight conditions. Threshold values on gray scale images are fixed using one parameter i.e. intensity. Figure 3.3 shown below is an input image after converting it to gray scale and HSV images using GRAY and HSV color model using MATLAB<sup>®</sup> 6.5.

Thresholding on gray level images is referred to as gray level thresholding and similar taxonomy applies to RGB and HSV thresholding. Gray level thresholding suffers from a draw back called intensity variation due to which pixel's intensity value varies with varying sun light conditions. This paved that way to switch to other color models.

Two color models have been used in this study. They are RGB and HSV. The RGB color model has 3 channels: red, green and blue. The number of color combinations available is 16.7 million colors. Default color images shot by cameras are RGB images. Three parameters namely red, green, and blue are available to fix threshold.



**Fig: 3.3. Input images a) Input RGB image b) Gray level image c) HSV image**

The HSV model is similar to the way humans perceive colors. This color space separates intensity and color information. HSV represents the hue, saturation and the value/intensity of the pixels in image. Hue represents the dominant wavelength and ranges from 0 to 360 degrees. Saturation represents the purity of color and is represented in percentage of purity. The lower the saturation the more grey it is and more faded it appears. Value or intensity represents the brightness of the color and is represented as the

percentage. The objects of similar intensities but different hues can be distinguished because of the addition of new variables hue and saturation. In HSV thresholding, three threshold values can be fixed making the thresholding process more efficient. HSV is superior to RGB in terms of “How humans perceive colors?” According to Wang et al. (2003), Hue is invariant to certain types of highlights, shadings and shadows.

Conversion formulae from RGB to HSV are presented below

Max=maximum(r, g, b)

Min=minimum(r, g, b) where r, g and b are values of red, green and blue components in an RGB color model respectively.

Hue (H) is defined as

$H=60(g-b)/ \max(r, g, b)-\min(r, g, b)$  if  $r=\max(r, g, b)$

$H=120 + 60(b-r)/ \max(r, g, b)-\min(r, g, b)$  if  $g=\max(r, g, b)$

$H=240+60(r-g)/ \max(r, g, b)-\min(r, g, b)$  if  $b=\max(r, g, b)$

Value (V) is defined as  $V=\max(r, g, b)$

Saturation (S) is defined as

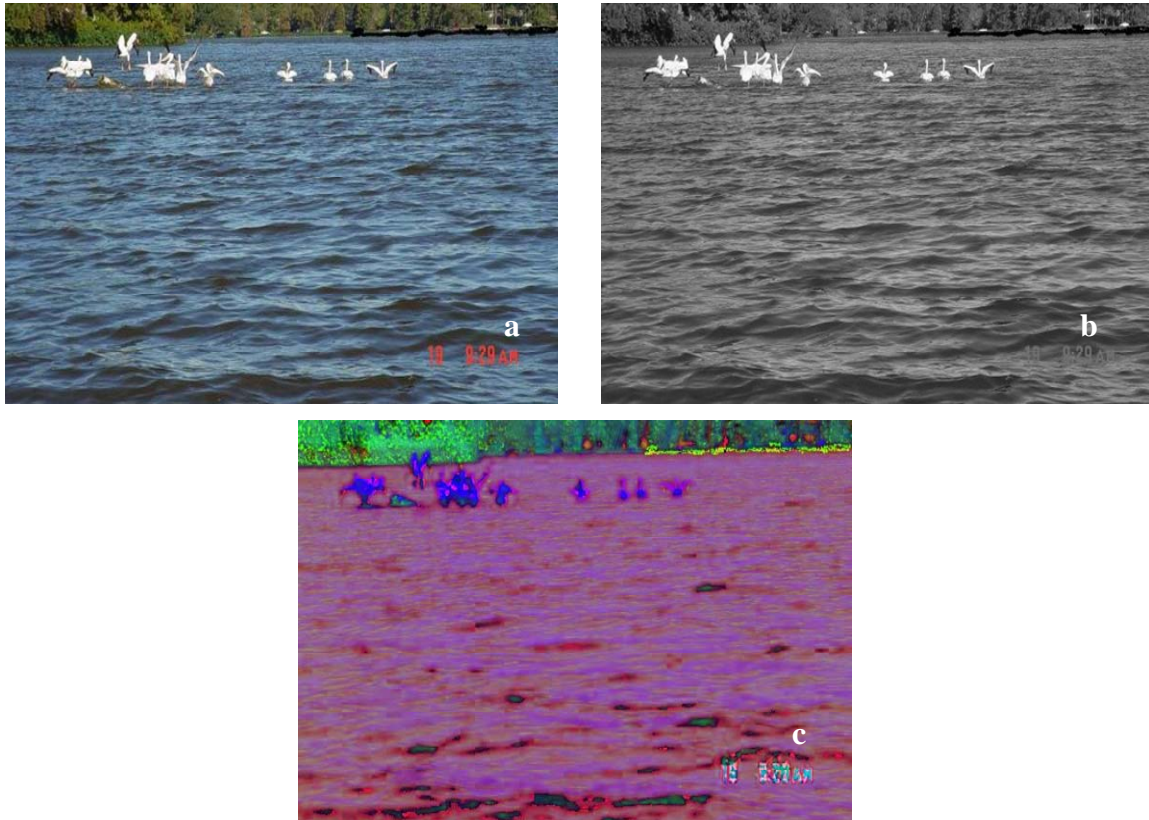
$S=\max(r, g, b)-\min(r, g, b)/\max(r, g, b) +\min(r, g, b)$  if  $\max (r, g, b) \neq 0$

$S=0$  if  $\max(r, g, b) =0$

### 3.1.3 Remove Horizon Pixels

Most of the input images have sky pixels which have the same color levels as white birds such as pelicans and egrets. An important step in any image processing technique is segmentation of objects using noise removal. Removing extra and redundant information from an image is known as noise removal. Several objects in an image contribute to noise. For instance in an image containing birds such as pelicans and egrets,

few horizon pixels above the water level contributed to noise. Figure 3.4 represents the input images of all color models after deleting first 100 rows from all images.



**Fig: 3.4. Images after cutting 100 rows of sky pixels a) RGB image b) Gray level image c) HSV image**

As both the pixels of birds and horizon are similar in intensity, recognition algorithm may misinterpret these pixels as bird pixel and reduce the correct classification rate (CCR). These pixels can be removed by deleting first few rows in an input image.

### 3.1.4 Add Required Rows and Columns

In this study, we consider a window around some pixels in the input image. Imagine a window around a pixel which is in the last few rows and columns of the input image. There is a possibility that numbers of pixels in the window are not adequate. In

order to avoid this problem few rows and columns, whose values are zeros, are added to the input image. Image after addition of rows and columns is shown in the figure 3.5



**Fig: 3.5. Input RGB image after cutting sky pixel rows and addition of required rows and columns**

100 rows and columns have been added to all sides of the image so that a window as large as 100 by 100 can be considered around last pixel in an image.

### 3.1.5 Local Thresholding

Thresholding is the method of eliminating the noise pixels based on a fixed threshold value. Pixels having the value above the fixed value will be considered as foreground pixels and the remaining as background pixels. The basic thresholding process can be explained as follows

Suppose a  $[m, n]$  represent the value of the brightness at  $m^{\text{th}}$  row and  $n^{\text{th}}$  column and  $T$  the fixed threshold value

Then  $a[m, n] \geq T = 1$  is the foreground pixel

Else  $a[m, n] = 0$  is the background pixel.

In this study a window is considered around a pixel whose value crosses threshold 1 and pixels in the window whose value crosses threshold 2 are considered foreground. Local threshold can be fixed based on neighboring pixels values. Scan all pixels in the input image other than the rows and columns added.

- 1) Scan each pixel row by row to identify any pixel that crosses threshold1.
- 2) Consider a window i.e. 60 by 60 in this case around the first pixel that crosses threshold1.
- 3) Consider pixels in this window whose values cross threshold 2 as foreground else background.
- 4) Repeat this process till the algorithm scans last pixel for threshold 1.

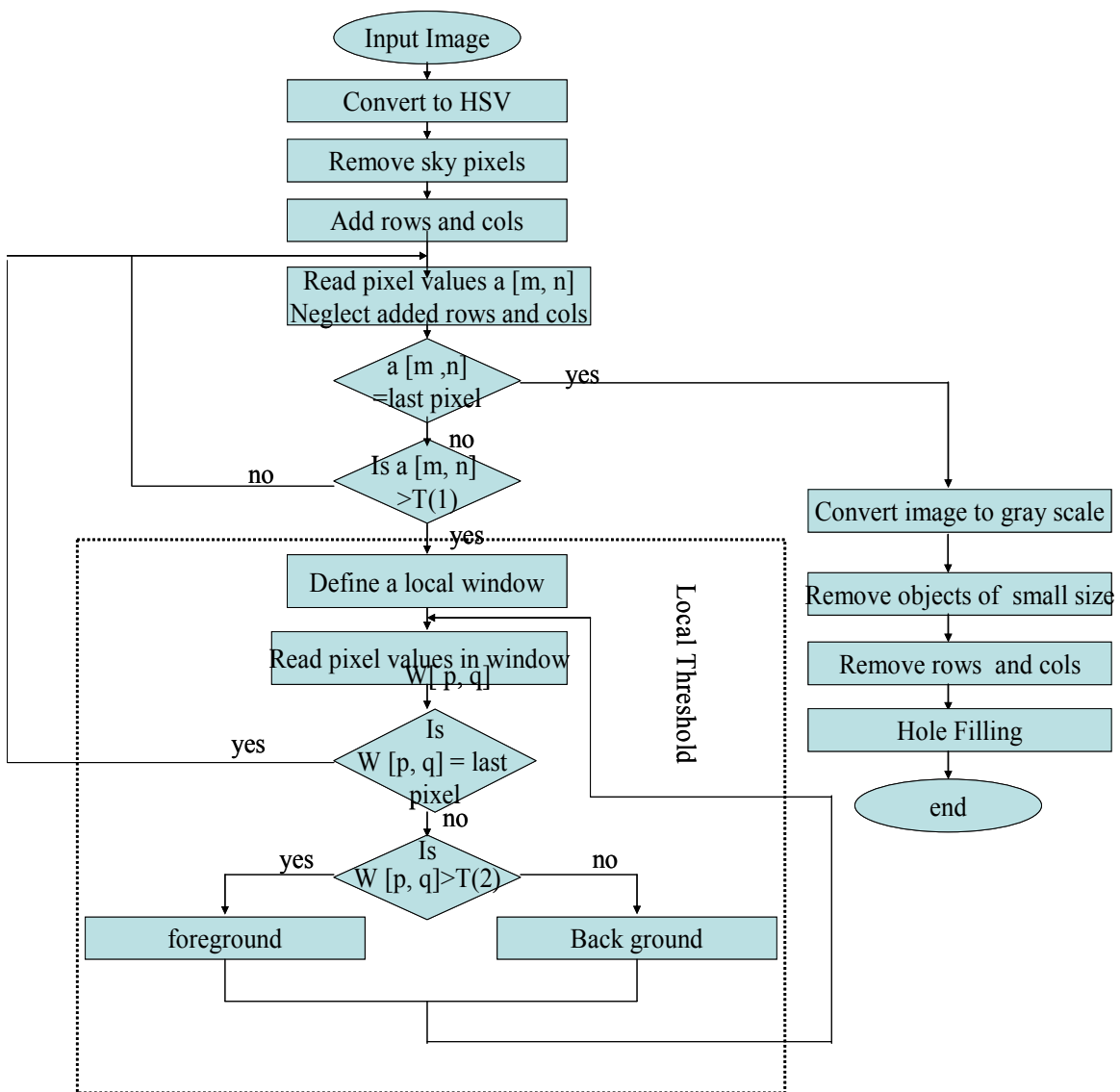
Figure 3.6 is a flow chart that explains every step in local thresholding. Results from local thresholding on gray level, RGB and HSV images are presented in the results section.

### 3.1.6 Convert Image to Gray Scale

First, the image is converted to gray scale to facilitate the removal of objects of smaller size.

### 3.1.7 Size Threshold

The process of removing the objects of smaller size than a fixed value is called size thresholding. Suppose the fixed value is 100 pixels. This process removes the objects of size less than or equal to 100 pixels. The objects of smaller size and of no interest can be removed using this procedure.



**Fig: 3.6. Flow chart representing image morphology**

Care should be taken while fixing threshold value because in some images (unclear images) birds are small in size and they might be considered as noise and removed. Resolution of images might require a change in the threshold value. Therefore input images of fixed size (VGA or 640 by 480 pixels) have been used in this study.

### 3.1.8 Remove Rows and Columns

Remove all the rows and columns that have been added previously. This process gives the output image which is of the same size as input image. This facilitates the location of objects with ease. Figure 3.6 represents the detail description of all the steps of algorithm in detail in a flowchart.

### 3.1.9 Dilation

Image after local thresholding may have few pixels which do not appear as a single object. Algorithm fills all holes in the objects of output image. This results in the final output image with solid objects instead of scattered pixels. This process of filling holes in an image is also called dilation.

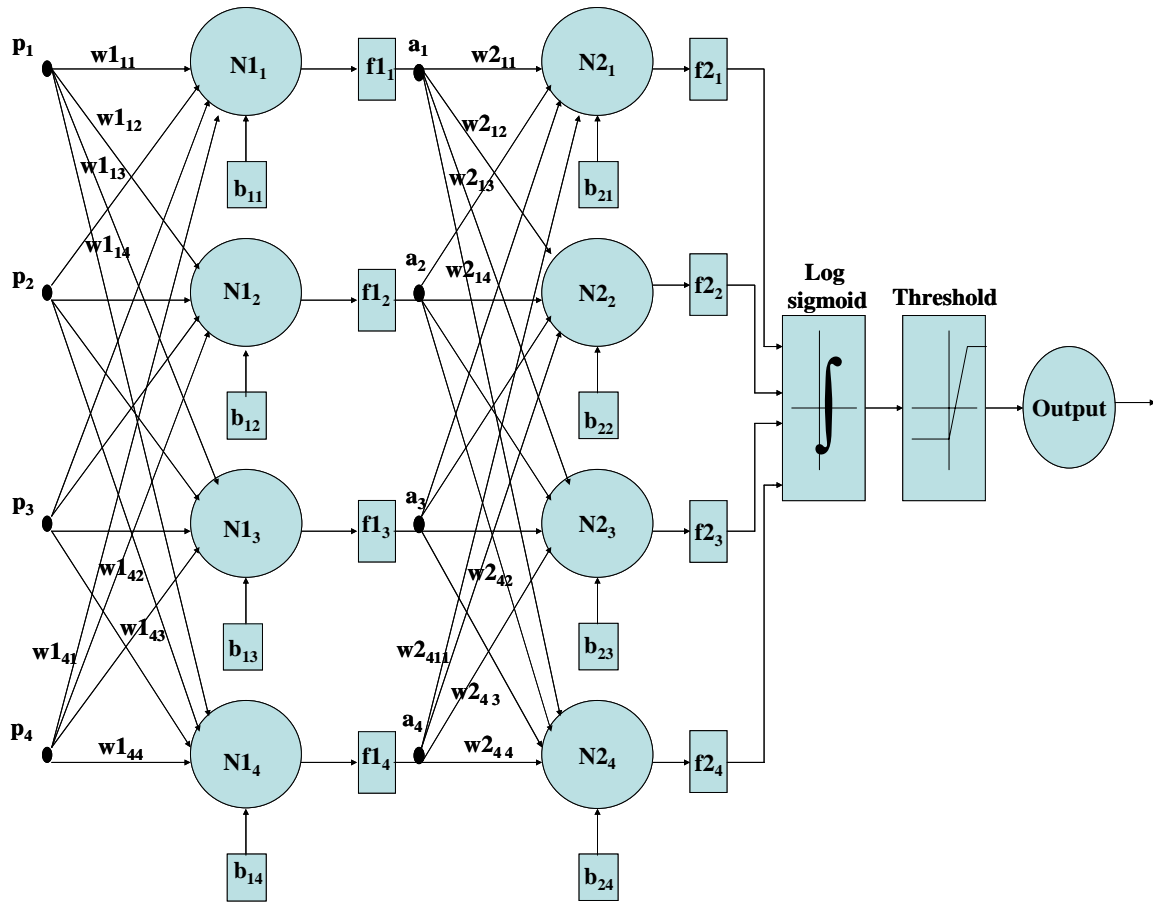
All the steps explained in this chapter have been implemented systematically. This removes the unnecessary objects in the input image and retains only the pixels of birds. The location of these birds can be determined by dividing the output image into three parts vertically and calculating the non-zero pixels in each part. A signal is then given to the autonomous boat to turn desired direction (either left, straight, right or no movement) and disperse the birds.

## 3.2 Artificial Neural Networks

We describe a general model of an ANN in figure 3.7 P1, P2, P3, and P4 in the figure represent the inputs to the ANN. This is a basic ANN and has an input layer and an output layer with no hidden layers. Input value of each neuron is multiplied by its corresponding weight followed by the addition of bias after each layer. This process continues until the end of all the layers. The values (signal) then goes through a transfer



function i.e. log sigmoid (Figure 3.8) and training continues until desired output is obtained.



**Fig: 3.7. A generalized model of an artificial neural network**

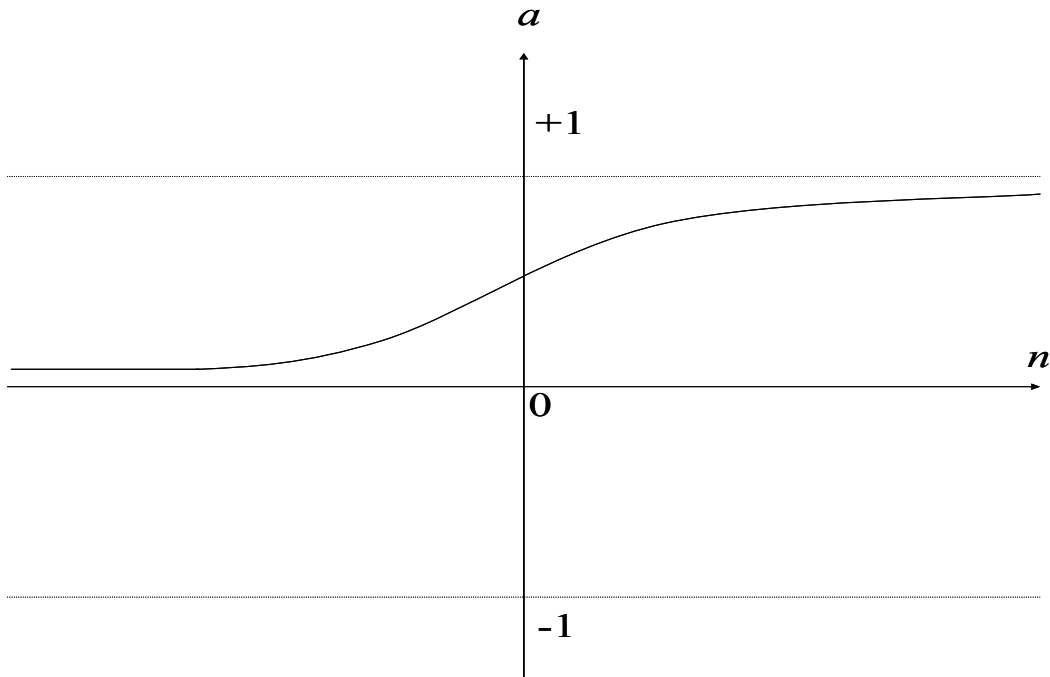
Later, the output value passes the threshold function and depending on the fixed threshold value, the presence or absence of birds in an image is determined.

We represent the value of  $a_k$  in the figure 3.7 as

$$a_k = \sum_{k=1}^m \sum_{j=1}^n \sum_{i=1}^n (p_i * wk_{ij}) + b_{1k}$$

Our feed forward back propagation neural network has five hidden layers. The number of elements in the input layer is the number of rows of the input image multiplied

by the number of columns. Input images of size 100 rows by 130 columns have been chosen so that the image is clear enough for the neural network to distinguish between birds and the lake.



**Fig: 3.8. Log sigmoid activation function**

Weights (also called strengths) have been initialized to some positive values. Signal later passes through the log sigmoid function. A threshold value of 0.4 is fixed and we consider the presence of birds if the output crosses threshold. The output layer is the final layer and it indicates the presence or absence of birds in the tested image. Neural networks learn through a training process and the success of artificial neural networks depends on training. The behavior of an ANN depends on both the weights and the transfer (also called activation) function. For sigmoid transfer functions, the output varies continuously but not linearly as the input changes. Sigmoid units bear a greater resemblance to real neurons than other transfer functions (Stergiou et al., 1996).

### 3.2.1 Log Sigmoid Function

We can represent the log-sigmoid function mathematically as  $a = \text{logsig}(n)$ , where  $a$  is the output of the ANN and  $n$  is the sum of the weighted inputs from the previous layer. In the above expression,  $a \rightarrow 1$  as  $n \rightarrow +\infty$  and  $a \rightarrow 0$  as  $n \rightarrow -\infty$ . The ANN output is in the range of 0 to 1. In order to prevent the value of  $n$  from moving to one extreme (towards  $+\infty$  or  $-\infty$ ), we preset the target values for the non-birds and birds regions as 0.1 and 0.9, respectively, instead of 0 and 1.

We designed a feed forward back propagation algorithm so that the network trains itself by propagating the error backward. Algorithm used in designing the artificial neural network model is as follows.

### 3.2.2 ANN Algorithm

The algorithm operates on one input-target pair  $(s, t)$  at a time. The network has  $L$  layers where  $k = 1, 2, \dots, L$  denotes the layer and  $f$  denotes the activation function of each neuron. Variable  $a[k-1]_i$  denotes a value associated with the  $i^{\text{th}}$  neuron in layer  $k-1$ .

- 1) Initialize the weights to small random values (these values can be both positive and negative).
- 2) Select an input-output pair  $(s, t)$ . Apply  $s$  to the input layer. Let  $a[0]_i = s_i$ , for all  $i$ .
- 3) Propagate the signal forward through the network using
- 4)  $a[k]_i = f(n_{in}[k]_i) = f(\sum w[k]_{ij} a[k-1]_j)$  for each  $i$  and  $k$  until the final outputs  $a[L]_i$  have all been calculated. In the above equation  $n_{in}[k]_i$  is the sum of weighted inputs to the  $i^{\text{th}}$  neuron in layer  $k$ .

- 5) Compute the delta (error term) for the output layer,  $\delta[L]_i = f' (n\_in[L]_i)(t_i - a[L]_i)$ , by comparing the actual outputs  $a[L]_i$  with the target outputs  $t_i$  for the input-output pair being considered.
- 6) Compute the deltas for the preceding layers by propagating the error backwards in the network:  $\delta[k]_i = f' (n\_in[k]_i) \sum w[k]_{ji} \delta[k+1]_j$ , for  $k = L-1, \dots, 2, 1$  until a delta has been calculated for every PE.
- 7) For a positive constant  $\alpha$ , use the change in weight value given by
- 8)  $\Delta w[k]_{ij} = \alpha \delta[k]_i a[k-1]_j$  to update all connections according to  
 $w[k]_{ij}^{\text{new}} = w[k]_{ij}^{\text{old}} + \Delta w[k]_{ij}$ .
- 9) Repeat entire procedure from step 2 for the next training pair.

ANN model completes one epoch when it completes all the steps as described in the algorithm.  $\alpha$  in the above algorithm is a training parameter. Training continues until the error goes beyond a certain value or the number of epochs goes above a certain value. The algorithm we implemented had an error value of 0.1 and 1000 epochs as threshold values and the algorithm ends if either one of the condition is satisfied. Increasing threshold value of the number of epochs to 5000 or decreasing the error threshold value below 0.1 could not increase the classification accuracy. On the other hand, the algorithm sometimes never obtained such less error or took more time, due to decreases error threshold value, to train the ANN. The other specifications for the designed ANN were

- 1) Number of layers = 2 ( 1 hidden layer + 1 Output Layer)
- 2) Number of input layer elements = 13,000
- 3) Number of hidden layer elements = 5
- 4) Processing elements in output layer = 1

- 5) Weight Matrices
- 6) Size of W1 = 5 x 13000
- 7) Size of W2 = 1 x 5
- 8) Bias Matrices
- 9) Size of B1 = 5 x 1
- 10) Size of B2 = 1 x 1

Using these specifications, we developed, trained, and tested a basic model of ANN. Testing the developed ANN resulted in encouraging results presented in the later sections of the document.

### 3.3 Template Matching

Correlation according to Gonzalez et al. (2003) is

$$f(x, y) \circ h(x, y) = \frac{1}{MN} \sum_{m=0}^{M-1} \sum_{n=0}^{N-1} f^*(m, n)h(x + m, y + n)$$

Where  $f(x, y)$  and  $h(x, y)$  are two images of size  $M \times N$  and  $f^*$  is the complex conjugate of  $f$ . We compute the correlation as represented in the figure 3.9 by shifting the template to each point in the image followed by multiplication of each pixel in the template image with the pixel in the template, which lies beneath the pixel in the template image, and finally adding the results. Another terminology given to this method is the dot product of two images. The best-combined match/maximum dot product gives the correlation of template with the input image. The white rectangle is the input image with the location (x, y coordinates) as mentioned and blue window is the template.

1,1	1,2	1,3	1,4	○	○							○	○	1,n
2,1	1,1	1,2	●	●	1,q									2,n
3,1	2,1	2,2	●	●	2,q									3,n
4,1	3,1	3,2	●	●	3,q									4,n
○	●	●	●	●	●									○
○	p,1	p,2	●	●	p,q									○
○														○
○														○
m,1	m,2	m,3	m,4	○	○							○	○	m,n

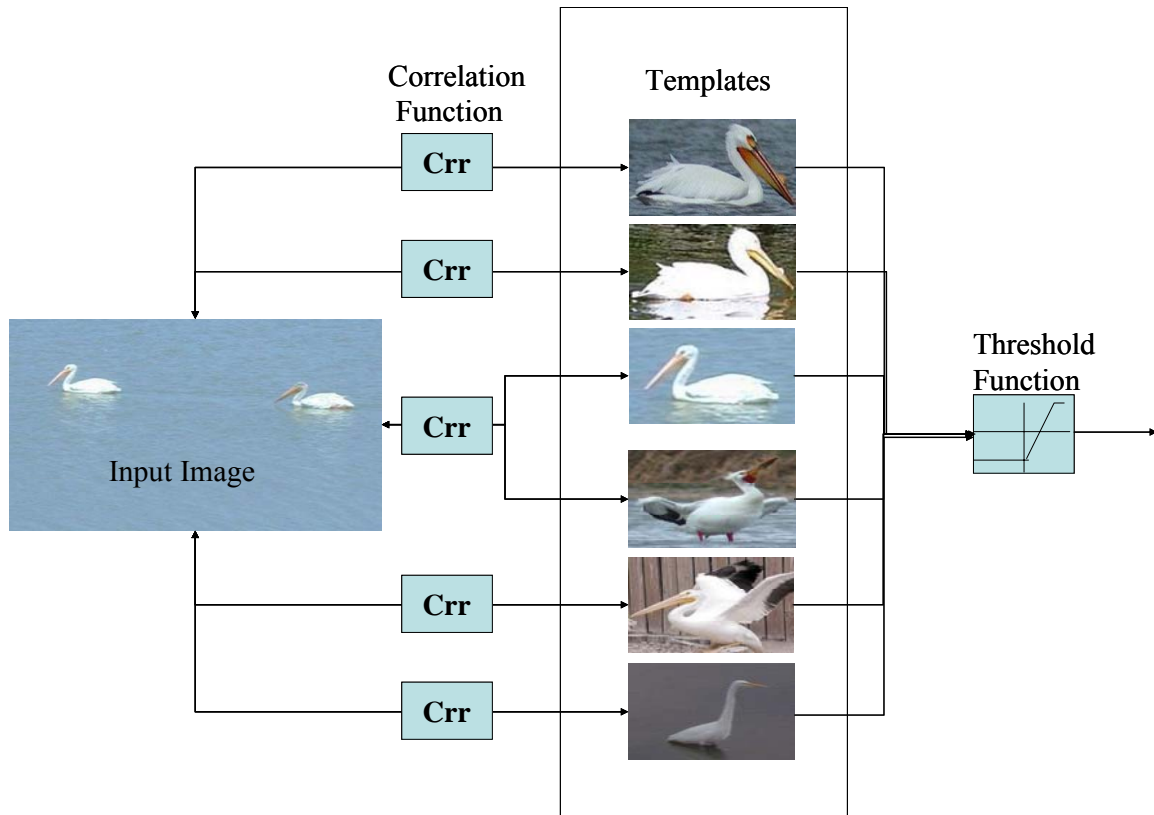
**Fig: 3.9. Template matching technique**

In the present case, we calculate the correlation at each point by multiplying each pixel in the blue window with the corresponding pixel in the input image. We repeat this procedure throughout the image and calculate the maximum of all correlations. Consider template pixels as P (p, q) and input image pixels as I (m, n) where p, m and q, n are the distances from the x and y axes respectively. Formula for calculating the correlation at each point is

$$\text{Correlation} = P(1,1)*I(2,2) + P(1,2)*I(2,3) + \dots + P(2,1)*I(3,2) + \dots + P(p, q)*I(6,6).$$

Templates in the present study are bird parts cut from various images. This is accomplished using the popular graphic viewer IrfanView (IrfanView., 2003). All the templates are stored in databases (e.g. database 10 has 10 templates in it) such as 10, 20,

30, etc. Each template in a database is correlated with the input image and the performances of all databases are compared. Figure 3.10 is a basic model of the template matching technique used in the study. Maximum normal correlation between the input image and each template image is calculated. We move each template in a database to every point/pixel in the image and calculate normal correlations.



**Fig: 3.10. Model of the template matching technique used in the study**

We report the maximum of all correlations as the output while matching or correlating a single template with the input image. Since we match or correlate several templates with the input image, we report only maximum dot products (maximum normal correlations). A threshold correlation value is fixed and if the correlation between the input image and any template in the database is above the threshold value, the input image has bird(s). Accurate recognition of birds requires the use of a large number of

template images as template matching varies with rotation, size etc. We correlated each template in the database with the input image. As represented image to the left is the input image and small bird images are the templates. Figure 3.10 represents template matching with pelicans and egrets only. However, we used the same technique to recognize pelicans, egrets and cormorants using separate databases.

The algorithm of template matching process used for the study is explained below in a systematic manner. Figure 3.11 is a flow chart that explains each operation in detail.

- 1) Threshold correlation (Th) value is fixed.
- 2) First template is correlated with the input image and maximum correlation reported.
- 3) Check maximum correlation whether or not it crosses Th.
- 4) Repeat the process until we correlate all the templates in the database with the input image followed by the calculation of maximum correlations and checking if they cross Th.
- 5) Input image contains birds if the maximum correlation value of at least one template with the input image crosses Th.

We used a variable (count) to calculate the number of times the correlations crossed the threshold value. Variable, maxcorr in the flow chart represents the maximum correlation. The results obtained using this algorithm are discussed in the following chapter.

### **3.4 Real Time Algorithm to Control Autonomous Boat**

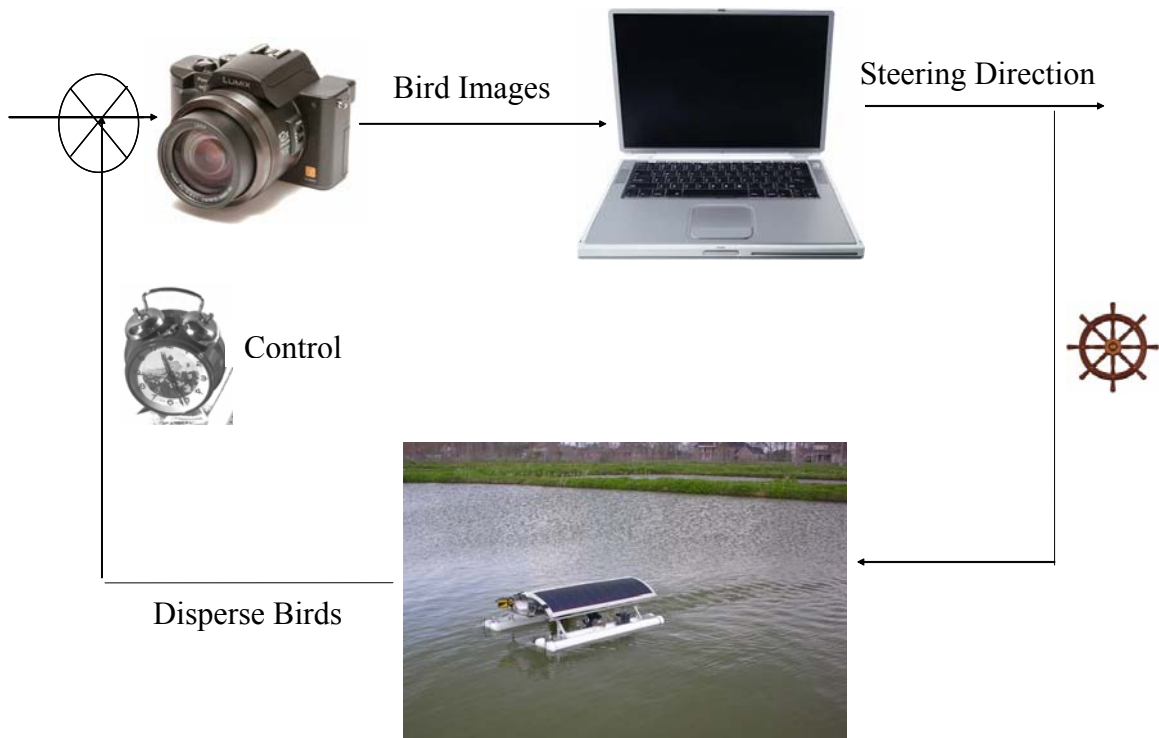
A block diagram that describes the method in detail is presented in the figure 3.12. We used Creative Webcam NX Pro, a web camera by creative (Creative, 2003).





**Fig: 3.11. Flow chart explaining the template matching technique**

The software used to detect the web camera also stores images in the desired format (jpeg in this study). Images have been taken by the web camera and stored in a desired folder in a computer in regular intervals of time.



**Fig: 3.12. Block diagram for the control of autonomous boat**

An image processing algorithm written using MATLAB<sup>®</sup> 6.5 acquires these input images from the folder one by one and executes the algorithm. Output from the algorithm is a simple number that gives the approximate location of birds. A basic stamp program makes the autonomous boat turn in the desired direction. The cycle repeats every few minutes.

## CHAPTER 4: RESULTS AND DISCUSSION

Correct classification rate (CCR) and misclassification rate (MCR) were calculated for image morphology algorithm. We manually observed the number of birds in an input image and compared it with the number of objects recognized in the output image of the algorithm. The other methods can be used to calculate the CCR on an entire image. These methods however could not concentrate on each bird (object) in an image. This might be because we trained and tested an entire image for CCR and MCR.

### 4.1 Image Morphology

Formulae used in this study are

Correct Classification Rate (CCR) = birds recognized/birds present

Misclassification Rate (MCR) = non-birds recognized/total objects recognized

CCR and MCR have different denominator values and hence their sum is not equal to 100%.

#### 4.1.1 Pelicans

Image morphology on HSV images (Table 4.1) produced greater accuracies (97.7% on medium clear images) than image morphology on gray level (93.3% CCR) and RGB images (84.1% CCR) regardless of difficulty level of images and size thresholding. Though the misclassification rate (up to 11.1%) was high when HSV images were tested, this rate may not be statistically significant and therefore can be neglected. Size threshold on medium clear and unclear images reduced the accuracies drastically.

Lowest CCR on medium clear images was 28.8% using RGB color space and on unclear images was 23.8% on both gray level and RGB images.

**Table: 4.1. Results obtained by testing image morphology algorithm on all types of images**

<b>Species</b>	<b>Classification</b>	<b>Size threshold</b>	<b>Difficulty level</b>	<b>Gray level</b>	<b>RGB</b>	<b>HSV</b>
<b>Pelicans</b>	<b>CCR</b>	<b>Before size</b>	<b>Type 1</b>	93.2	84.1	95.5
			<b>Type 2</b>	93.3	84.4	97.7
			<b>Type 3</b>	57.1	57.1	57.1
		<b>After size</b>	<b>Type 1</b>	84.1	81.8	95.5
			<b>Type 2</b>	31.1	28.8	88.9
			<b>Type 3</b>	23.8	23.8	38
	<b>MCR</b>	<b>Before size</b>	<b>Type 1</b>	6.8	5.1	10.6
			<b>Type 2</b>	2.3	2.5	12
			<b>Type 3</b>	8	8	7.6
		<b>After size</b>	<b>Type 1</b>	2.6	2.7	8.7
			<b>Type 2</b>	0	0	11.1
			<b>Type 3</b>	0	0	0
<b>Egrets</b>	<b>CCR</b>	<b>Before size</b>	<b>Type 1</b>	100	100	100
			<b>Type 2</b>	84.6	80.7	92.3
			<b>Type 3</b>	90.0	90.0	90.0
		<b>After size</b>	<b>Type 1</b>	90.9	90.9	100.0
			<b>Type 2</b>	84.6	73.0	92.3
			<b>Type 3</b>	80.0	80.0	80.0
	<b>MCR</b>	<b>Before size</b>	<b>Type 1</b>	6.8	8.3	15.3
			<b>Type 2</b>	21.4	8.6	22.5
			<b>Type 3</b>	18	25	36
		<b>After size</b>	<b>Type 1</b>	2.6	0.0	8.3
			<b>Type 2</b>	15.3	9.5	22.5
			<b>Type 3</b>	20.0	20.0	33.3
<b>Cormorants</b>	<b>CCR</b>	<b>Before size</b>	<b>Type 1</b>	90.0	90.0	90.0
			<b>Type 2</b>	95.5	95.4	90.9
			<b>Type 3</b>	46.1	46.1	46.2
		<b>After size</b>	<b>Type 1</b>	75.0	70.0	85.0
			<b>Type 2</b>	86.3	81.8	77.2
			<b>Type 3</b>	38.4	38.4	23.1
	<b>MCR</b>	<b>Before size</b>	<b>Type 1</b>	5.2	5.6	10.0
			<b>Type 2</b>	19.2	19.2	23.1
			<b>Type 3</b>	25.0	25.0	25.0
		<b>After size</b>	<b>Type 1</b>	6.2	6.6	10.5
			<b>Type 2</b>	20.8	21.7	22.7
			<b>Type 3</b>	28.5	22.2	40.0

One reason might be the presence of many birds in few images. Unrecognizing some of them after size thresholding might have reduced the CCR drastically. This would have resulted in reduced accuracies after size thresholding.

Image morphology on unclear images produced less accuracy rates irrespective on size thresholding. This may be due to poor quality of input images. As mentioned previously, birds in some unclear images were small in size and size thresholding further reduced the CCR to as low as 23.8%.

#### 4.1.2 Egrets

Image morphology on HSV images produced better or equal CCR (80% to 100%) on many images of egrets whether or not size thresholding had been implemented. However, misclassification rate was as high as 36% on unclear HSV images, which cannot be neglected. Image morphology using other color models (GRAY and RGB) also produced MCR as high as 21.4 % (on gray level images) and 25% (on RGB images) on medium clear and unclear images respectively. Misclassification rate of HSV unclear images before size thresholding was double that of misclassification rate of gray level images. Choice of color model depends on the type of applications because some applications might tolerate misclassification rate where as some may not.

#### 4.1.3 Cormorants

Cormorants are species of birds that are bluish black in color. These species swim with most of their bodies in water and only neck outside the water. Recognition became difficult in such images. Clear and medium clear images were clear and CCR as high as 90% and 95.5% were obtained. However recognition became difficult with unclear images using all color models. Image morphology, especially on HSV unclear

images resulted in low classification rates and high misclassification rates. For example, image morphology on unclear HSV images followed by size thresholding resulted in a CCR which was as low as 23.1%. MCR on HSV unclear images was 25% before size thresholding and 40% after size thresholding. MCR was more than CCR in this case. Hence, HSV color model is not a better choice for recognizing cormorants using image morphology algorithm developed for the study. RGB and GRAY color models produced almost same CCR and MCR and therefore any one of them can be chosen.

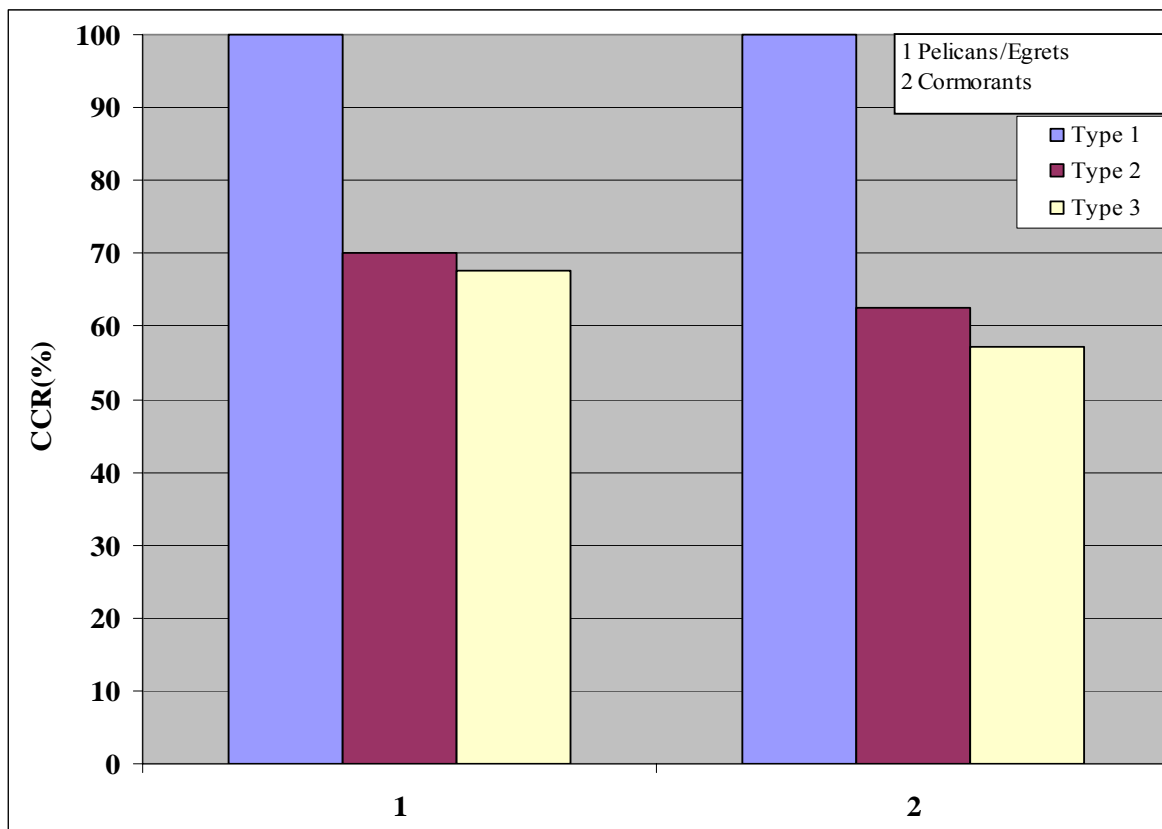
Most of the time unclear images had dark background which was similar to the color of birds. Hence, the algorithm was unable to distinguish between background and birds and resulted in very high misclassification rates. Local threshold values that were fixed using few images could not work properly on all other images. From the results it can be concluded that image morphology did not work as expected on unclear cormorant images.

Overall HSV color model dominated RGB and GRAY models when image morphology was implemented on white birds (pelicans and egrets). The HSV color model can be used in cases where a small amount of misclassification can be tolerated for its high correct classification. Even though the misclassification rate was greater when using HSV color space, it was efficient in recognizing birds in some unclear images. However all color models worked equally on all black birds (cormorants) except on unclear images. None of the color models produced expected accuracy rates on unclear cormorants. Size thresholding, which was expected to reduce noise and remove pixels of other objects, affected the accuracy rates to a great extent. Image morphology on medium clear pelican images resulted in a drastic decrease of CCR after size thresholding. This

may be due to the presence of birds of smaller size which were normally recognized but removed after size thresholding.

## 4.2 Artificial Neural Networks

The CCR is the number of images correctly recognized divided by the total number of images. The MCR is the number of images misclassified divided by the total number of images. MCR is also  $(100-CCR) \%$ . Figure 4.1 represents the results obtained by testing the ANN algorithm. As indicated the first set of results in the graph represent the results of testing pelicans and egret images and set 2 represents cormorants. The first peak, second peak and the third peak in each set represents Type 1, Type 2 and Type 3 images respectively.



**Fig: 4.1. Results from the ANN algorithm**

We trained the ANN model to recognize pelicans and egrets using the same algorithm. ANN models for every species would require the operation of a number of algorithms simultaneously on the semi-autonomous boat. Taking into consideration, the application point of view of all the algorithms in real time, we generalized the species of birds to the maximum extent.

Table 4.2 includes all the results in a tabular form. While ANN worked very well on all Type 1 images, CCR on Type 2 and Type 3 images reduced.

**Table: 4.2. Tabulated results from ANN algorithm**

<b>Bird</b>	<b>Type of Image</b>	<b>CCR (%)</b>
<b>Pelicans and Egrets</b>	<b>Type 1</b>	100.0
<b>Pelicans and Egrets</b>	<b>Type 2</b>	70.0
<b>Pelicans and Egrets</b>	<b>Type 3</b>	67.7
<b>Cormorants</b>	<b>Type 1</b>	100.0
<b>Cormorants</b>	<b>Type 2</b>	62.5
<b>Cormorants</b>	<b>Type 3</b>	57.1

Artificial neural network model produced almost equal CCR on Type 2 and Type 3 images. However, all types of images of pelicans, egrets and cormorants were recognized with satisfactory CCR.

### **4.3 Template Matching**

We tested the images for the presence or absence of birds separately on each section and each recognition method. The CCR is the number of images correctly recognized divided by the total number of images. The MCR is the number of images misclassified divided by the total number of images. MCR is (100-CCR) %. We used same databases for testing white birds such as pelicans, egrets and white ducks and different databases to test blackish tinge birds such as cormorants though the algorithm is the same for all birds. Test images included lakes in order to fix precise



threshold/boundary between images of birds and other objects. Testing algorithm included ten Type 1, Type 2 and Type 3 images using different combinations of rows removed and databases. We used databases of 10, 20, 30, 50, and 70 while testing pelicans and egrets and only 10, 20, and 30 databases while testing cormorants, due to the scarcity of dependable cormorant images of adequate size. Similar images have been discarded. Sky pixels contributed to misclassification and therefore we included this variable as one of the factors affecting the CCR using template matching. In few images, the first few rows in the input image had sky pixels. We tested the algorithm by removing 0, 50, 100, and 150 rows from the input image. Irrespective of the number of rows removed, each database had its own threshold value (E.g. 0.52 for database 50 and 0.5 for database 70).

#### 4.3.1 Pelicans and Egrets

Table 4.3 presents the accuracies obtained by testing several combinations of rows removed and databases on all kinds of images of pelicans and egrets. However, for better interpretation of results, graphs showing the correct classification rate (CCR) while testing all Type 1, Type 2 and Type 3 images have been included in figures 4.2, 4.3, and 4.4 respectively.

Graphs indicated that removal of 150 rows regardless of database resulted in a very poor performance (20% for database 10 and 20, 10% for database 30, and 40 and 50% for database 70) especially while testing Type 3 and Type 1 images. This may be due to the presence of bird pixels in the first 150 rows of an image. Removal of bird pixels would have resulted in misclassification.

**Table: 4.3. Template matching results on pelicans and egrets**

Database	Rows Removed	Type of Image	Accuracy (%)
10	0	Type 1	80.0
		Type 2	80.0
		Type 3	70.0
10	50	Type 1	80.0
		Type 2	70.0
		Type 3	70.0
10	100	Type 1	90.0
		Type 2	90.0
		Type 3	60.0
10	150	Type 1	70.0
		Type 2	80.0
		Type 3	20.0
20	0	Type 1	90.0
		Type 2	80.0
		Type 3	60.0
20	50	Type 1	90.0
		Type 2	60.0
		Type 3	50.0
20	100	Type 1	90.0
		Type 2	70.0
		Type 3	80.0
20	150	Type 1	70.0
		Type 2	60.0
		Type 3	20.0
30	0	Type 1	80.0
		Type 2	80.0
		Type 3	70.0
30	50	Type 1	80.0
		Type 2	80.0
		Type 3	60.0
30	100	Type 1	90.0
		Type 2	90.0
		Type 3	60.0
30	150	Type 1	80.0
		Type 2	90.0
		Type 3	10.0

(Table continued)

50	0	Type 1	90.0
		Type 2	80.0
		Type 3	60.0
50	50	Type 1	90.0
		Type 2	70.0
		Type 3	50.0
50	100	Type 1	90.0
		Type 2	80.0
		Type 3	50.0
50	150	Type 1	57.1
		Type 2	77.8
		Type 3	10.0
70	0	Type 1	90.0
		Type 2	80.0
		Type 3	70.0
70	50	Type 1	80.0
		Type 2	80.0
		Type 3	60.0
70	100	Type 1	75.0
		Type 2	66.7
		Type 3	70.0
70	150	Type 1	71.4
		Type 2	74.0
		Type 3	50.0

Therefore, we discard the removal of 150 rows from the input images. As mentioned previously, we used lake images for testing and fixing threshold i.e. the boundary value between bird pixels and pixels of other objects. Table 4.3 and the graphs obtained from testing all kinds of images depict database 10 as one of the good choices for template matching especially on Type 3 images. However, most of the unclear images including lakes crossed the threshold. This resulted in misclassification of lake images and the algorithm produced positive result indicating the presence of birds even though no bird was present. Removal of 0, 50 and 100 rows from Type 3 input images encountered a similar problem with databases 20.

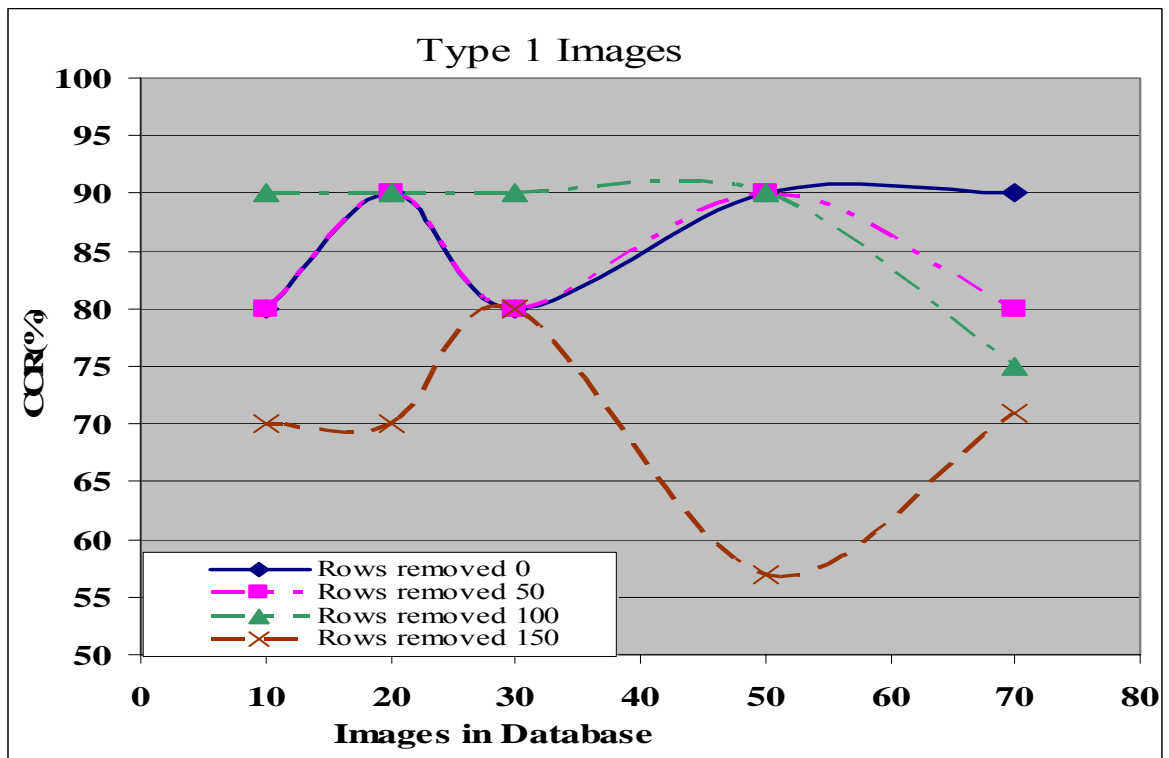


Fig: 4.2. Results obtained while testing Type 1 images of pelicans and egrets

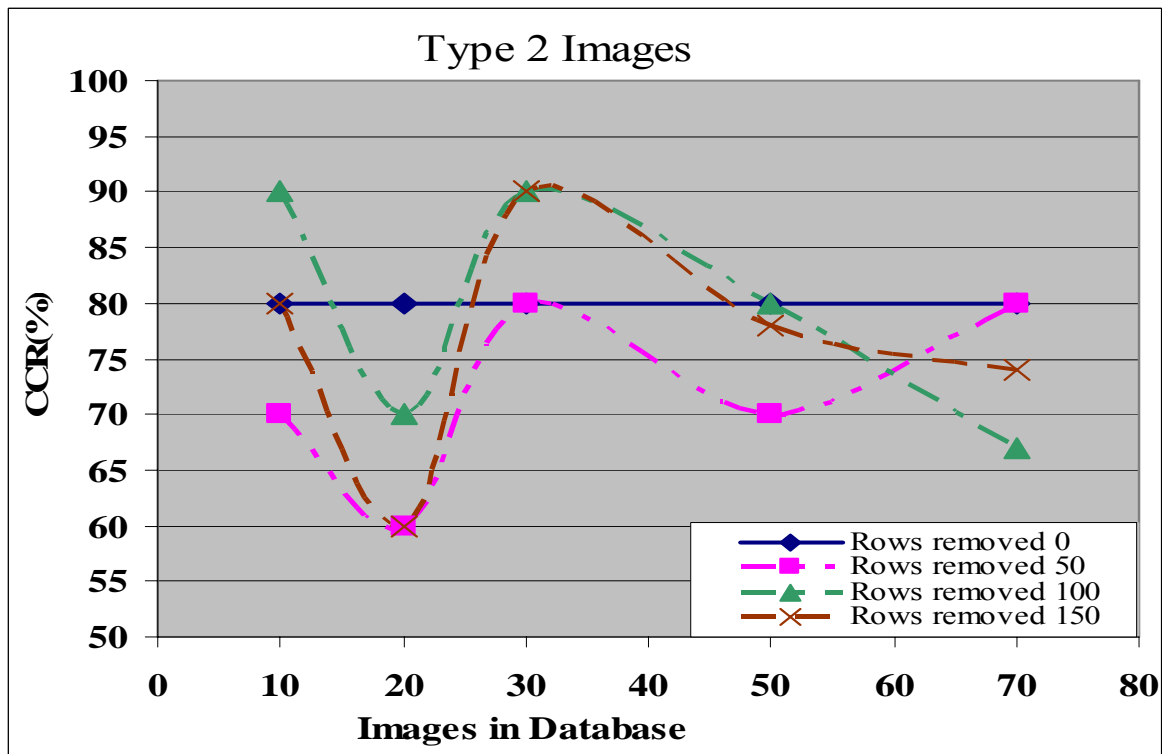
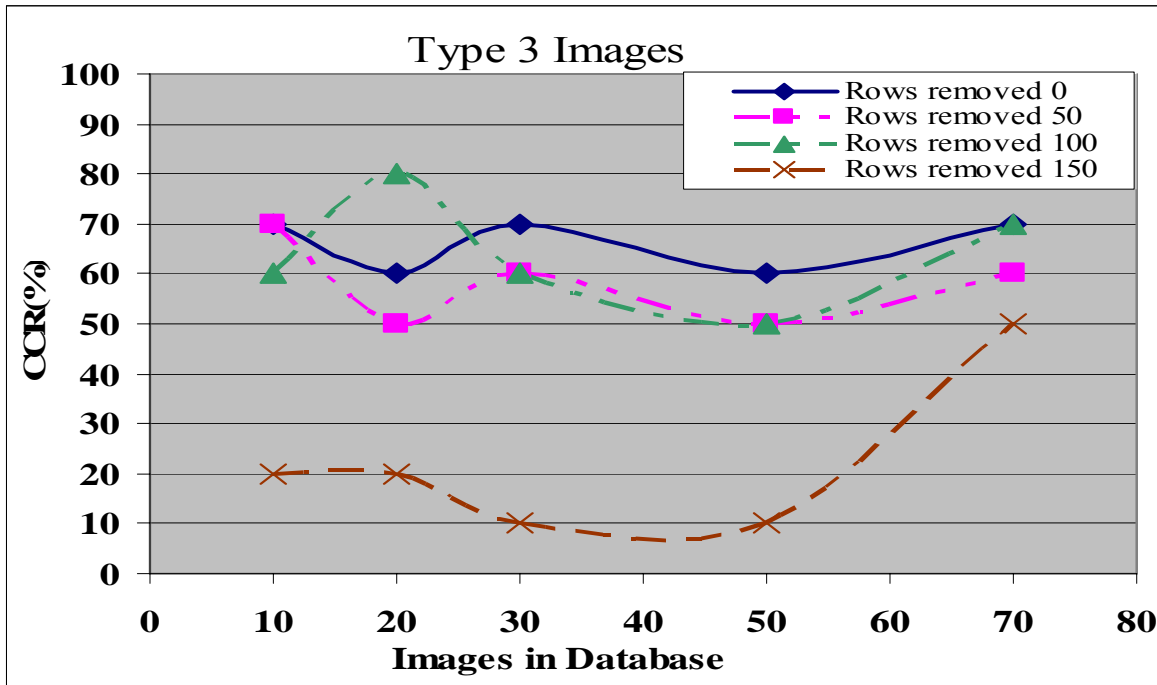


Fig: 4.3. Results obtained while testing Type 2 images of pelicans and egrets

Most of the databases did not work properly on Type 3 images and databases 10 and 20 worked worst on them. However due to the problems associated with these databases on Type 3 images, we consider database 10 and 20 ineffective for this study. Figure 4.5 provides the various times taken by the algorithm for different combinations of databases and the rows removed.

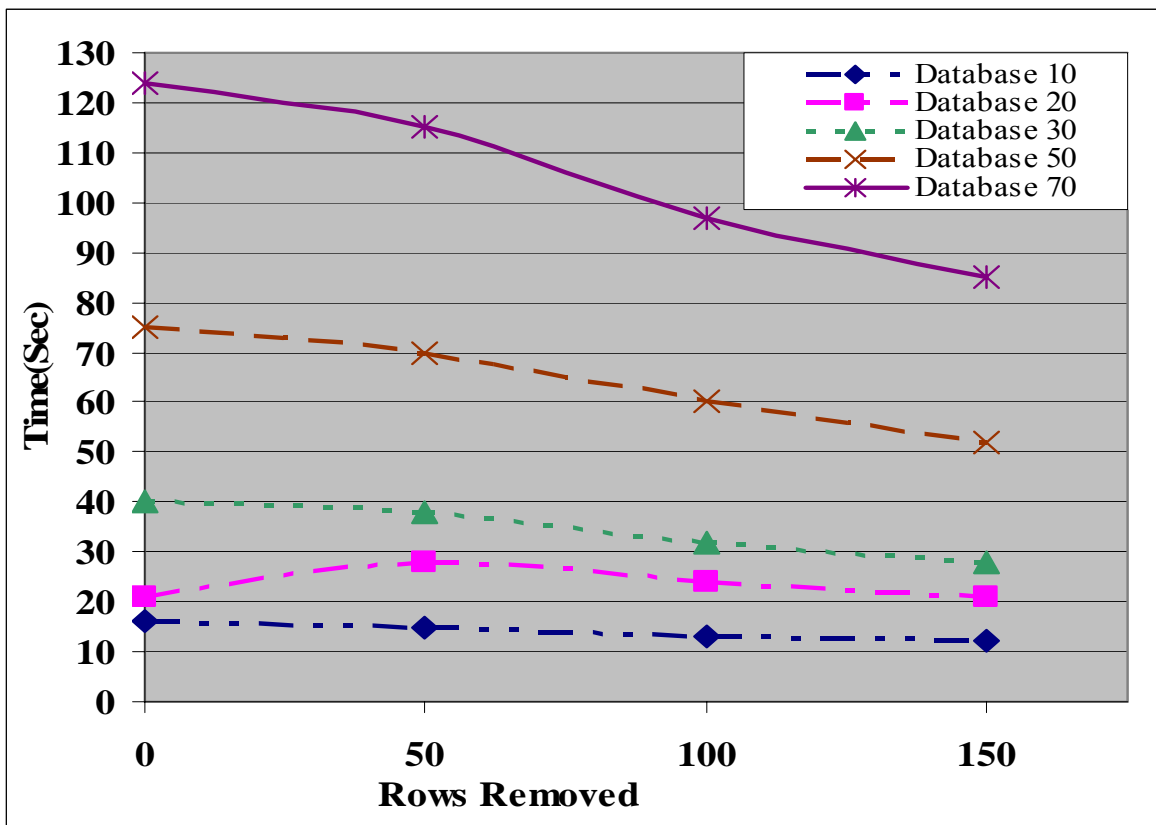
Databases 10, 20, and 30 took less than 40 seconds execution times. Database 70 took more than 85 seconds in all the tests. We cannot neglect the time taken by database 70. Therefore, we discarded database 70 from the study. However, we can consider the time taken by database 50 (less than the time taken by database 75) as satisfactory. Studying all the graphs and neglecting the removal of 150 rows from the input image, it is evident that database 30 and 50 maintained consistency in CCR. However, database 50 maintained more consistency in the classification of Type 1 and Type 2 images.



**Fig: 4.4. Results obtained while testing Type 3 images of pelicans and egrets**

Removal of no rows produced good CCR's of 90%, 80% and 60% respectively on Type 1, Type 2 and Type 3 images respectively using the database 50. Therefore, we considered this as the best combination for template matching using the available images. Best match might change with the type of images in the databases.

Overall study on pelicans and egrets resulted in poor classification of unclear images. Though some databases (such as 10, 20) produced good CCR's on unclear images, all input images including lakes crossed threshold. However, the algorithm worked well on all Type1 and Type 2 images. Table 4.4 includes the results of algorithm after testing cormorants.



**Fig: 4.5. Operation time for testing images using template matching**

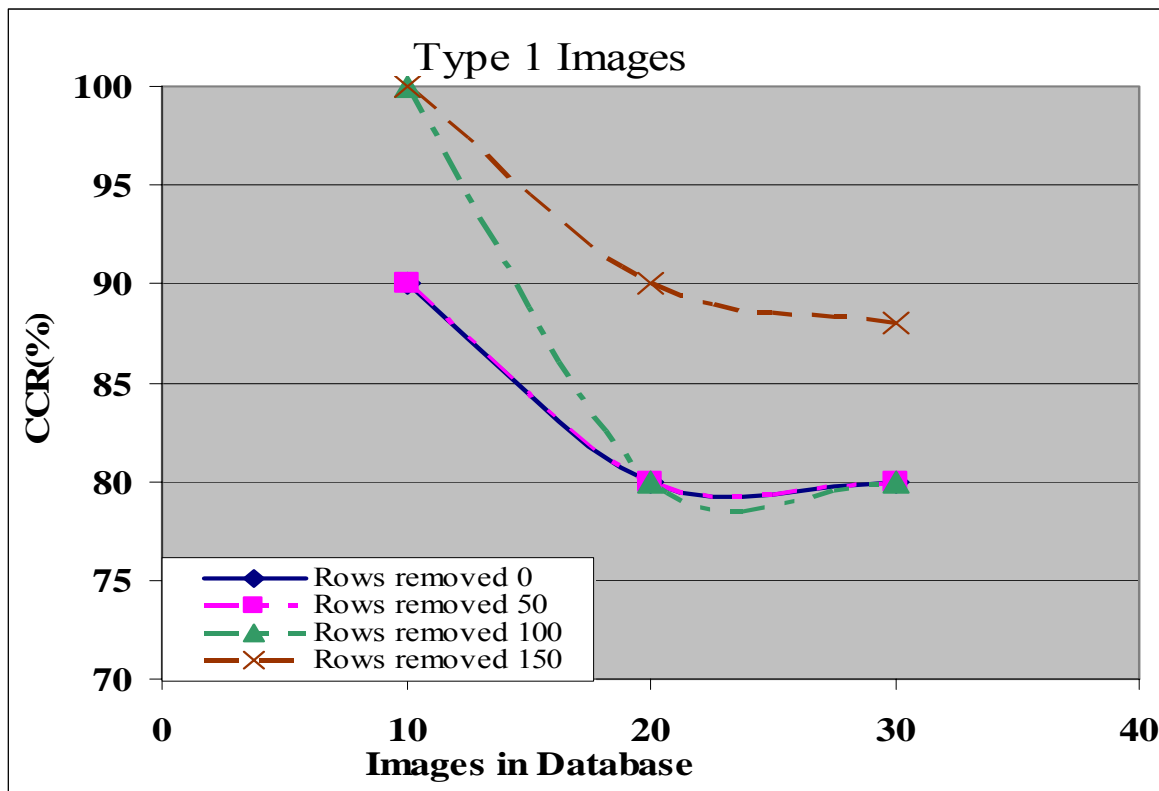
### 4.3.2 Cormorants

We tabulated all the CCR's on all types of images of cormorants in table 4.4.

**Table: 4.4. Template matching results on cormorants**

Database	Rows Removed	Type of image	CCR (%)
10	0	Type 1	90.0
		Type 2	90.7
		Type 3	10.0
10	50	Type 1	90.0
		Type 2	91.7
		Type 3	30.0
10	100	Type 1	100.0
		Type 2	91.7
		Type 3	40.0
10	150	Type 1	100.0
		Type 2	81.8
		Type 3	30.0
20	0	Type 1	80.0
		Type 2	91.7
		Type 3	60.0
20	50	Type 1	80.0
		Type 2	91.7
		Type 3	60.0
20	100	Type 1	80.0
		Type 2	91.7
		Type 3	80.0
20	150	Type 1	90.0
		Type 2	90.9
		Type 3	60.0
30	0	Type 1	80.0
		Type 2	83.3
		Type 3	60.0
30	50	Type 1	80.0
		Type 2	83.3
		Type 3	70.0
30	100	Type 1	80.0
		Type 2	91.7
		Type 3	80.0
30	150	Type 1	87.5
		Type 2	90.9
		Type 3	70.0

The same database for all birds would confuse the algorithm and might result in classifying every object as a bird. Therefore, we tested cormorants separately using a different database since they are of different color than pelicans and egrets. Adult cormorants have black plumage and immature cormorants have brownish back and upper wings. Figures 4.6 to 4.8 represent the results when we tested the algorithm on Type 1, Type 2, and Type 3 images respectively.



**Fig: 4.6. Results obtained while testing Type 1 images of cormorants**

The database is an important parameter and the results might differ when images in a database change. Removal of 100 rows produced consistent CCR of 80%, 91.7% and 80% while testing Type 1, Type 2 and Type 3 images using database 20 compared to 90%, 90.9% and 60% when 150 rows were removed. We included the conclusions from the implemented algorithms and recommendations for the future in the next chapter.



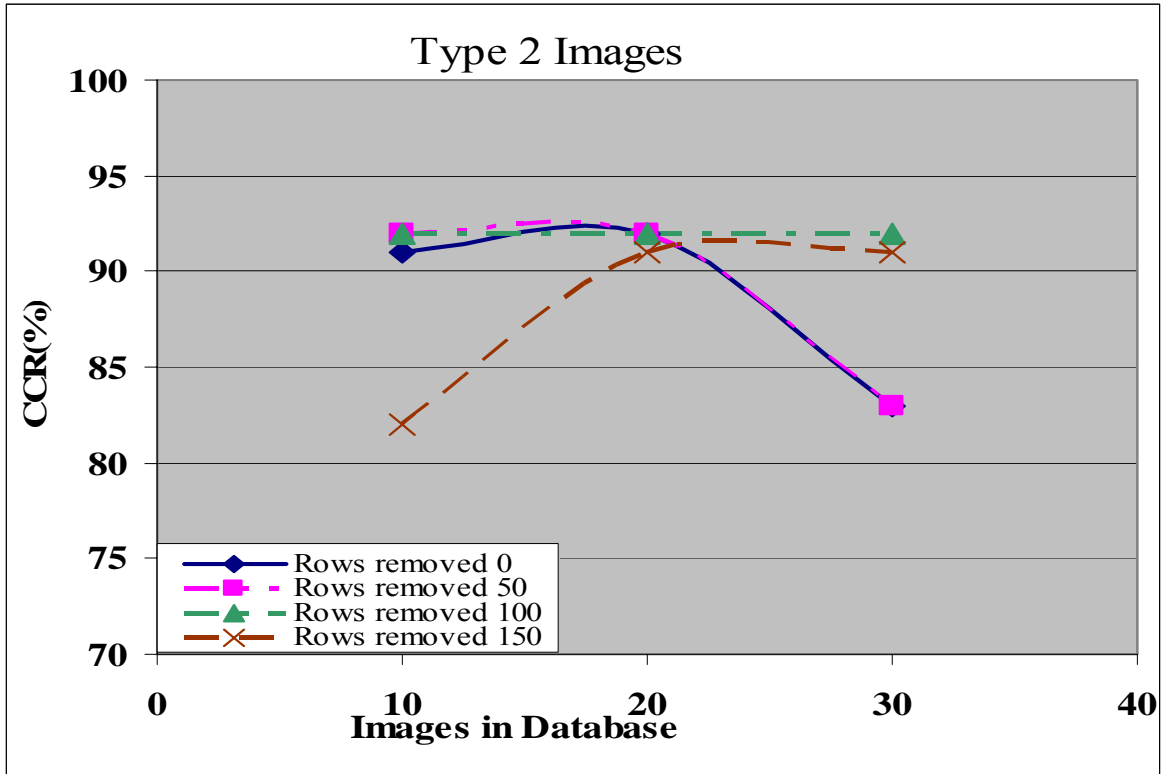


Fig: 4.7. Results obtained while testing Type 2 images of cormorants

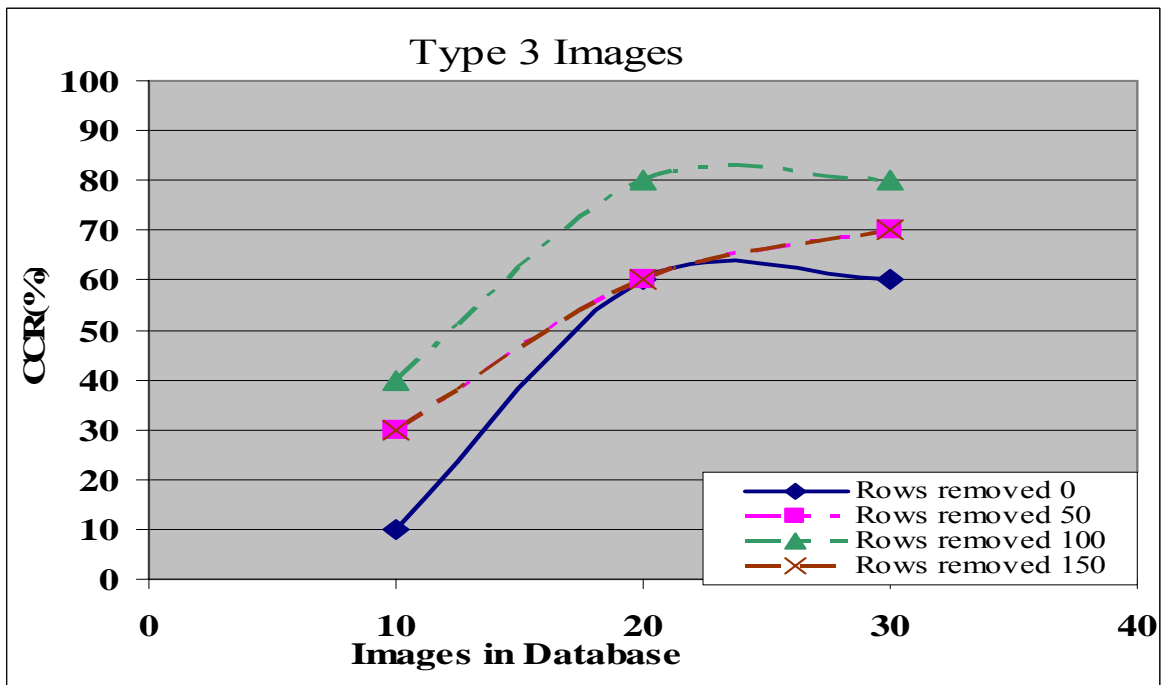


Fig: 4.8. Results obtained while testing Type 3 images of cormorants

## **CHAPTER 5: CONCLUSIONS AND RECOMMENDATIONS FOR THE FUTURE**

The use of image processing techniques for the recognition of birds in aquacultural ponds is a novel concept that enables increased flexibility in dispersing predatory birds. Three image processing algorithms 1) image morphology, 2) artificial neural networks, and 3) template matching were designed and tested. We extended the algorithm to recognize birds in real time conditions. We developed necessary algorithms for implementation. We used image processing and neural network tool boxes of MATLAB<sup>®</sup> 6.5 version to develop algorithms. The training and testing of all the algorithms were done on an Intel<sup>®</sup> Pentium<sup>®</sup> 4 CPU with a 3.0 GHz processor, 504 MB of RAM, and a 150 GB hard drive. The size of most of the images used for the study was 640 by 480 (VGA) pixels. We considered this size taking into consideration the implementation time and also the cost of digital cameras. Even the cheapest digital camera could shoot images of that size. The image morphology algorithm took approximately 15 seconds to produce results. The ANN model took three minutes to train the images. However, results were obtained instantaneously (nearly one second) while testing the images. Time taken by the template matching algorithm ranged from 16 seconds to 2 minutes based on the templates in a database and the number of rows of horizon pixels removed from the input image. Template matching using a larger database (for example a database with 70 templates) might not be recommended for real time operation of autonomous boat to disperse birds from aquacultural stations.

Although some algorithms took more time to produce results, all the algorithms produced encouraging results on all types of images on all species of birds (pelicans, egrets, and cormorants) tested. Image morphology resulted in 57.1% to 97.7%, 73.0% to

100%, and 46.1% to 95.5% correct classification rates (CCR) respectively on images of pelicans, cormorants and egrets before size thresholding. HSV color space produced better results than the other two color models while testing the images of pelicans and egrets using image the morphology algorithm. This algorithm worked well on images of pelicans and egrets. However, it failed to produce accurate results with cormorant images because most of the body (except the neck) is hidden under water. A limitation with this algorithm is that the same threshold might not work properly under all lighting conditions. Therefore a better algorithm that could change threshold values according to lighting conditions might be developed in the future. The artificial neural network model achieved 100% CCR while testing type 1 images and its classification success ranged from 63.5% to 70.0%, and 57.1% to 67.7% while testing type 2, and type 3 images respectively. The ANN model recognized all clear images, and produced satisfactory results on other images. Accuracy can be improved by selecting proper images for training. The template matching algorithm succeeded in classifying 90%, 80%, and 60% of Type 1, Type 2, and Type 3 images of pelicans and egrets. This technique recognized 80%, 91.7%, and 80% of Type 1, Type 2, and Type 3 images of cormorants. Template matching produced good results. Size and rotation of birds in an image might affect the accuracy of the algorithm. Therefore a database that could represent different sizes and angles of birds might further improve the accuracy of the algorithm.

All the algorithms can be used in the future in other applications such as the detection of birds in fields, and the discrimination between weeds and plants. Clarity of images generally increases with increasing size of images. Algorithms can be tested in the future on faster computers. Algorithms might take less time to run on faster

computers. We tested only few species of predatory birds. However, this study can be extended to other predatory birds such as herons, geese etc.

We considered the movement of birds in the study. However, movement of the platform i.e. the autonomous boat could also be studied in the future. Infra red cameras or cameras using other wavelengths can be used in the future for detecting birds. There is a scope for future work on this thesis to further improve the performance of the image processing algorithms. In this thesis we presented a basic neural network model to classify the bird regions from the others. We can further improve this network accuracy by training it on a larger data set. We developed individual algorithms for different species of predatory birds. All the algorithms can be generalized and a single algorithm for all species might be developed in the future. All the algorithms can be tested in real time in the future. Also, there is a scope for the development of a more precise algorithm to locate birds.

This work opened the door for other types of image processing and helped lay the ground work for future work with bird or other species. Additionally, the consideration of both moving targets and a moving platform increase the complexity of the task. Although this work only touched on this marginally, future work should further explore each of these challenges.

## REFERENCES

Aitkenhead, M. J., I. A. Dalgetty, C. E. Mullins, A. J. S. Mc. Donald, and N. J. C. Strachan. 2003. Weed and Crop Discrimination Using Image Analysis and Artificial Intelligence Methods. *Computers and Electronics in Agriculture*, Vol 39, Pp157-171.

Anonymous. 2002. Website: Autonomous Vehicles  
(<http://www.csois.usu.edu/future/>).

Anonymous. 2003 .Website: Neural Network  
(<http://brain.web-us.com/brain/neural.html>).

Anonymous. 2004. Website: Cormorants  
(<http://www.bangornews.com/editorialnews/article.cfm?ID=436248>).

Bakircioglu, H. and E. Gelenbe. 1998. Random neural network recognition of shaped objects in strong clutter. *Proceedings of SPIE--the international society for optical engineering*. Vol.33, No 07, Pp 22-28.

Barras, S. 2002. Online document: Bird Damage  
(<http://www.aphis.usda.gov/ws/researchreports/report2.pdf>).

Batra, S. W. T. 1988. Automatic Image Analysis for Rapid Identification of Africanized Honey Bees In: Needham, G.R. (ed.), *Africanized honeybees and bee mites*. E. Horwood, Chichester, West Sussex, England, Pp 260-263.

Blackmore, S., H. Henrik, and F. Spyros. 2002. Specification of Behavioral Requirements for an Autonomous Tractor. *Proceedings of the July 26-27, 2002 ASAE Conference Chicago, Illinois, USA*. Publication number 701P0502, Pp 13-23.

Bomford, M. and P.H .O. Brien. 1990. Sonic Deterrents in Animal Damage Control: A Review of Device Test and Effectiveness. *Wildlife Society Bulletin*, Vol 18, Pp 411-422.

Bostelman, R. 2003. Online Document: NIST Autonomous Vehicles  
(<http://www.isd.mel.nist.gov/projects/iav/IAV.pdf>).

Bruder, J. A., V. N. Cavo, and M. C. Wicks. 1997. Bird Hazard Detection with Airport Surveillance Radar. *Radar Conference*. Publication number 449, Pp 160-163.

Bulanon, D. M., T. Kataoka, S. Zhang, Y. Ota, and T. Hiroma. 2001. Optimal Thresholding for the Automatic Recognition of Apple Fruits. *American Society for Agricultural Engineers Publication No. 013133*, Sacramento, California, USA.

Bulanon, D. M., T. Kataoka, Y. Ota, and T. Hiroma. 2002. A Segmentation Algorithm for the Automatic Recognition of Fuji Apples at Harvest. *Biosystems Engineering*, Vol 83, No 4, Pp 405-412.

Campbell, B. 1994. *Introduction to Remote Sensing*. New York, N.Y. The Guilford Press, a Div. of Guilford Publication, Inc.

Casasent, D. P. 1992. Hierarchical Scene Analysis for Object Recognition. *Proceedings of SPIE*, Vol 1699, Pp 218-224.

Casasent, D., A. Talukder, P. Keagy, and T. Schatzki. 2001. Detection and Segmentation of Items in X-Ray Imagery. *Transactions of the ASAE*, Vol 44, No 2, Pp 337-345.

Chang, H. and U.Robles. 2000. Website: Template Matching (<http://www-cs-students.stanford.edu/~robles/ee368/matching.html>).

Creative, 2003. Website: Web Camera. (<http://www.creative.com/products/product.asp?prodid=628>)

Cruvinel, P. E. and E. R. Minate. 2002. Image Processing in Automated Pattern Classification of Oranges. Presented as Paper number 701P0301 at the Proceedings of the World Congress of Computers in Agriculture and Natural Resources, Iguacu Falls, Brazil, March 2002, Pp 56-61.

Debipersad, S. C. and A. D. Broadhurst. 1997. *Proceedings of the South African Symposium on Communications and Signal Processing*. Pp 33 – 36.

El-Faki, M. S., N. Zhang, and D. E. Peterson. 2000. Weed Detection Using Color Machine Vision. *Transactions of the ASAE*, Vol 43, No 6, Pp 1969-1978.

Endangered Species Act. 1973. Online Document: Endangered Species Act ([http://ecos.fws.gov/tess\\_public/TESSWebpageVipListed?code=V&listings=0#B](http://ecos.fws.gov/tess_public/TESSWebpageVipListed?code=V&listings=0#B)).

Fadzil, M. H. A. and L. C. Choon. 1997. *International Conference on Neural Networks. IEEE Conference Proceedings* .Vol 3, Pp 1638 – 1643.

Glahn, J. F. and K. E. Brugger. 1995. The Impact of Double-Crested Cormorants on the Mississippi Delta Catfish Industry. *Colonial Water Birds*, Vol 18, Pp 168-175.

Glahn, J. F., M. E .Tobin, and J. B. Harrell. 2000. Population Status and Management Issues in the Midwest: Possible Effects of Catfish Exploitation on Over Winter Body Condition of Double-Crested Cormorants. *Symposium on Double-Drested Cormorants*. United States Department of Agriculture, Animal and Plant Health Inspection Service Technical Bulletin, Vol 1879, Pp 107-113, Washington, D.C, USA.

Gliever, C. and D. C. Slaughter. 2001. Crop versus Weed Recognition with Artificial Neural Networks. Presented as Paper number 013104 at ASAE conference, Sacramento, California, August 2001.

Gonzalez, R. C. and R. E. Woods. 2003. Digital Image Processing second edition, Pearson education (Singapore) Pte. Ltd, Delhi, India.

Graves, R. E. 2004. A Primer on Robotic Milking. Presented as Paper number 044187 at ASAE conference, Ottawa, Ontario, Canada, August 2004.

Griepentrog, H. W. and H. Sogaard. 2003. Robotic Weeding in Sugar Beet. Proceedings of the NJF's 22nd Congress Nordic Agriculture in Global Perspective, Turku, Finland.

Grovum, M. A. and G. C. Zoerb. 1970. An Automatic Guidance System for Autonomous Tractors. Presented as Paper number 011191, at ASAE conference, St. Joseph, Miami, USA.

Guyer, D. E, G. E. Miles, M. M. Schrieber, O. R. Mitchell, and V. C. Vanderbitt. 1986. Machine Vision and Image Processing for plant identification. Transactions of the ASAE, Vol 29, No 6, Pp 1500-1507.

Hall, S. G., R. Price, and L. Wei. 2001. Design of an Autonomous Bird Predation Reduction Device. Presented as Paper number 01-3131, at ASAE International Meeting, St. Joseph, MI.

Hall, S. G. and R. R. Price. 2003 a. An Autonomous Scare boat to Reduce Bird Predation on Aquaculture Ponds. Louisiana Agriculture.

Hall, S. G. and R. Price. 2003 b. Using Autonomous Robotic Vehicles for Aquacultural and Environmental Applications. Presented as Paper number 03-202, at CSAE Annual Meeting, Montreal, Canada.

Hall, S. G. and R. R. Price. 2003 c. Mobile Semi-Autonomous Robotic Vehicles Improve Aquacultural Ventures by Reducing Bird Predation and Improving Water Quality Monitoring. Abstract, Proceedings of the World Aquaculture Society, Louisville, KY.

Hall, S. G., R. R. Price, and N. Mandhani. 2004. Use of Autonomous Vehicles for Drinking Water Monitoring and Management in an Urban Environment. Presented as Paper number 047053, at ASAE/CSAE International Meeting, St. Joseph, MI.

Hall, S. G., N. Mandhani, A. Mudgundi, and R. R. Price. 2005. Autonomous Vehicle Measurement and Analysis of Water Quality. Proceedings of the Institute of Biological Engineering, Pp. xx-xx.

- Harvey, D. 2004. Website: Louisiana's History (<http://members.aol.com/DHarvey691/louisiana.html>).
- Hatem, I. and J. Tan. 2003. Cartilage and Bone Segmentation in Vertebra Images. Transactions of the ASAE, Vol 46, No 5, Pp 1429-1434.
- Hemming, J. and T. Rath. 2001. Computer vision-based Weed Identification under field Conditions using controlled Lighting. Journal of Agricultural engineering Research, Vol 78, No 3, Pp 223-243.
- Hansen, G. L., E. M. Sparrow, J. Y. Kokate, K. J. Leland, and P. A. Iaizzo. 1997. Wound Status Evaluation using Color Image Processing. IEEE Transactions on Medical Imaging, Vol 16, No 1, Pp 78-86.
- Kondou, H. H., Y. Motonaga, H. Kitamura, K. Nakanishi, and T. Kameok. 2002. Evaluation of Tree Vigor by Digital Camera Based on Fruit Color and Leaf Shape. Proceedings of the World Congress of Computers in Agriculture and Natural Resources 13-15, March 2002, Iguacu Falls, Brazil, ASAE Publication Number 701P0301, Pp 70-77.
- Hatem, I. and J. Tan. 2003. Cartilage and Bone Segmentation in Vertebra Images. Transactions of the ASAE, Vol 46, No 5, Pp 1429-1434.
- Hemming, J. and T. Rath. 2001. Computer vision-based Weed Identification under field Conditions using Controlled Lighting. Journal of Agricultural Engineering Research, Vol 78, No 3, Pp 223-243.
- IrfanView. 2003. Website: IrfanView [www.irfanview.com](http://www.irfanview.com).
- Jackway, P. T. 1995. Morphological Scale-Space with Application to Three-Dimensional Object Recognition. Unpublished Ph.D. Thesis. [Queensland University of Technology](http://www.qut.edu.au/~technology), 204pp, 1995.
- Jimenez, A. R., R. Ceres, and J. L. Pons. 2000. A Survey of Computer Vision Methods for Locating Fruit on Trees. Transactions of the ASAE, Vol 43, No 6, Pp 1911-1920.
- Kapur, J. P. 1997. Website: Face Recognition (<http://www.geocities.com/jaykapur/face.html>).
- Kavdir, I. and D. E. Guyer. 2002. Apple Sorting Using Artificial Neural Networks and Spectral Imaging. Transactions of the ASAE, Vol 45, No 6, Pp 1995-2005.
- Kim, S. and T. Schatzki. 2001. Detection of Pinholes in Almonds through X-Ray Imaging. Transactions of the ASAE, Vol 44, No 4, Pp 997-1003.



Kise, M., N. Nobura, I. Kasunobu, and T. Hideo. 2002. Enhancement of Turning Accuracy by Path Planning for Robot Tractor. Proceedings of the July 26-27, 2002 ASAE Conference Chicago, Illinois, USA. Publication number 701P0502, Pp 398-404.

Klein, A. L., M. Hovan, G. Genello, and P. Antonik. 2003. MMW Radar for Dedicated Bird Detection at Airports and Air Fields. Online Document (<http://www.int-birdstrike.com/Proceedingpdf%2026th/MMW%20RADAR%20FOR%20DEDICATED%20BIRD%20DETECTION%20AT%20AIRPORTS.pdf>).

Lacey, G., S. Fergal, and W. Niall. 2004. Website: Global and Local Techniques. (<http://www.cs.tcd.ie/courses/computervision/ComputerVisionIntro2.html>).

Lauria, S. and R. J. Mitchell. 1998. Proceedings of the Neural Networks for Signal Processing VIII. IEEE Signal Processing Society, Pp 539 – 546.

Lee, C. H., S. H. Lee, and H. H. wang. 2001. Automatic Lean Tissue Generation of Carcass Beef via Color Computer Vision. Presented as Paper number 016122 at ASAE conference, Sacramento, California, August 2001.

Leemans, V., H. Magein, and M. F. Destain. 1999. Defect Segmentation on ‘Jonagold’ Apples using Color Vision and a Bayesian Classification Method. Computers and Electronics in Agriculture, Vol 23, Pp 43-53.

Lezoray, O., A. Elmoataz, and H. Cardot. 2003. A Color Object Recognition Scheme: Application to Cellular Sorting. Machine vision and Applications, Vol 14, Pp 166-171.

Littauer, G. A., J. F. Glahn, D. S. Reinhold, and M. W. Brunson. 1997. Control of Bird Predation at Aquaculture Facilities: Strategies and cost estimates. Southern Regional Aquaculture Center Publication No 402, Mississippi State Cooperative Extension Service, Mississippi State.

Liu, H. X. and B. Ram. 2001. Online Document: Vision –Based Stop Sign Detection and Recognition System for Intelligent Vehicle ([http://www.topslab.wisc.edu/resources/publications/ran/2001/ran\\_998.pdf](http://www.topslab.wisc.edu/resources/publications/ran/2001/ran_998.pdf)).

Liu, J. and M. R. Paulsen. 2000. Corn Whiteness Measurement and Classification Using Machine Vision. Transactions of the ASAE, Vol.43, No 3, Pp 757-763.

MathWorks, 2005. Website: Image Processing Tool Box (<http://www.mathworks.com/applications/imageprocessing/>).

Migratory Bird Treaty Act. 1918. Online document: Migratory Bird Treaty Act (<http://migratorybirds.fws.gov/intrnltr/mbta/cnvntion.pdf>).

Morimoto, E., M. Suguri, and M. Umeda. 2002. Online Document: Obstacle Avoidance System.  
(<http://dspace.library.cornell.edu/retrieve/307/PM+01+009+Morimoto.pdf>).

Nasrabadi, N. M. and W. Li. 1991. Object recognition by a Hopfield neural network. IEEE Transactions on Systems, Man and Cybernetics, Vol 21, No 6, Pp 1523 – 1535.

Neethirajan, S., C. Karunakaran, D. S. Jayas, and N. D. G. White. 2004. X ray Image Analysis to Determine Air flow Path in Grain Bunks. Presented as Paper number 043080 at ASAE conference, Ottawa, Ontario, Canada, Aug 2004.

Nishiwaki, K., T. Togashi, K. Amaha, and K. Matsuo. 2001. Estimate Crop Position Using Template Matching in Rice Production. Presented as Paper number 013103, at ASAE conference, Sacramento, California, August 2001.

Nishiwaki, K., T. Togashi, and K. Amaha. 2002. Vision-Based Speed and Yaw Angle Measurement System. Proceedings of the July 26-27, 2002 ASAE Conference Chicago, Illinois, USA. Publication number 701P0502, Pp 212-220.

Price, A., G. Taylor, and L. Kleeman. 2000. Online Document: Fast, Robust Color Vision for the Monash Humanoid  
(<http://www.ecse.monash.edu.au/centres/irrc/LKPubs/humanoid.PDF>).

Price, R. R. and S.G. Hall. 2001. Biorobotics and Autonomous Machinery in Agricultural and Bioproduction Systems. Presented as paper number 013131 at ASAE conference, Sacramento, California, August 2001.

Price, R.R. and S.G. Hall. 2002. Development of an Autonomous Boat for Bird Reduction on Aquaculture Ponds. Presented as Paper number 023110, at ASAE.

Ruiz L.A., E. Molto, F. Juste, F. Pla, and R. Valiente. 1996. Location and Characterization of the Stem-Calyx Area on Oranges by Computer Vision. Journal of Agricultural Engineering Research, Vol 64, Pp 165-172.

Seipelt, F., A. Bunger, R. Heeren, D. Kahler, M. Lullmann, and G. Pohl. 2003. Computer Controlled Calf Rearing. Proceedings of the ASAE Conference, Fort Worth, Texas, USA, Publication number 701p0203, Pp 356-360.

Short, J. J., M. E. Kelley, R. J. Speelman, and R. E. McCarty. 1999. Bird Strike Prevention: Applying Aero-Science and Bio-Science. Abstract Proceedings of the International Bird Strike Conference.

Shin, B. S., S. H. Kim, and J. U. Park. 2002. Autonomous Agricultural Vehicle Using Overhead Guide. Proceedings of the ASAE Conference Chicago, Illinois, USA, Publication number 701P0502, Pp 261-269.

Simpson, A., T. Stombaugh, L. Wells, and J. Jacob. 2003. Imaging Techniques and Applications for UAV's in Agriculture. Presented as Paper number 031105 at ASAE conference, Las Vegas, Nevada.

Sinha, D. and C. R. Giandina. 1990. Discrete Black and White Object Recognition via Morphological Functions. IEEE Transactions on Pattern Analysis and Machine Intelligence Vol 12, No 3, Pp 275-293.

Soren , R. and C. Woodcock. 1996. Combining Spectral and Texture Data in the Segmentation of Remotely Sensed Images. Photogrammetric Engineering and Remote Sensing. Journal of the American Society for Photogrammetry and Remote Sensing, Vol 62, No 2, Pp 181-194.

Stergiou, C. and S. Dimitrios. 1996. Website: Artificial Neural Network Description ([http://www.doc.ic.ac.uk/~nd/surprise\\_96/journal/vol4/cs11/report.html](http://www.doc.ic.ac.uk/~nd/surprise_96/journal/vol4/cs11/report.html)).

Stickley, A. R. and K. J. Andrews. 1989. Survey of Mississippi Catfish Farmers on Means, Effort, and Costs to Repel Fish-Eating Birds from Ponds. Proceedings of Eastern Wildlife Damage Control Conference Vol 4, Pp 105-108.

Sural, S., G. Qian, and S. Pramanik. 2002. Online Document: Segmentation and Histogram Generation Using the HSV Color Space for Image Retrieval (<http://www.cse.msu.edu/~pramanik/research/papers/2002Papers/icip.hsv.pdf>), Pp 589-592.

Tao, Y., Z. Chen, H. Jing, and J. Walker. 2001. Internal Inspection of Deboned Poultry Using X-Ray Imaging and Adaptive Thresholding. Transactions of the ASAE Vol 44, No 4, Pp 1005-1009.

Terawaki, M., T. Kataoka, H. Okamoto, and S. Hata. 2002. Distinction between Sugar Beet and Weeds for Development of Automatic Thinner and Weeding Machine of Sugar Beet. Proceedings of the ASAE Conference Chicago, Illinois, USA. Publication number 701P0502, Pp 129-136.

Thiang., A. T. Guntoro, and R. Lim. 2001. Online Document: Type of Vehicle Recognition Using Template Matching Method ([http://faculty.petra.ac.id/thiang/download/paper/Pengenalan\\_Mobil\\_P017.pdf](http://faculty.petra.ac.id/thiang/download/paper/Pengenalan_Mobil_P017.pdf)).

Trnasport Canada. Airport Bird Detection System. Website: Bird Detection (<http://www.tc.gc.ca/tdc/projects/air/e/5162.htm>).

Wang, H. and D. Suter. 2003. Color Image Segmentation using Global Information and Local Homogeneity. Proceedings of Seventh Digital Imaging Computing Techniques and Applications, Dec 10-12, 2003, Sydney.

Wu, Y. T. 1999. Website: Image Segmentation (<http://www.ablesw.com/3ddoctor/3dseg.html>).

Xinwen, Y., Z. Shen, and S. Ninomiya. 2002. Online Document: Measuring Geometrical Features of Insect specimens using Image Analysis (<http://www.jsai.or.jp/afita/afita-conf/2002/part8/p591.pdf>), Pp 591-595.

Young, S., C. H. Sibata, A. K. Ho, and K. H. Shin. 1996. IEEE International Conference on Acoustics, Speech, and Signal Processing, Vol 6, Pp 3418 – 3421.

Zhou, Z. H., Y. Jiang, Y. B. Yang, S. F. Chen. 2002. Online Document: ANN for Cancer Cell Detection. (<http://cs.nju.edu.cn/people/zhouzh/zhouzh.files/publication/aim02.pdf>).

# APPENDIX A - IMAGE PROCESSING ALGORITHMS

## IMAGE MORPHOLOGY–PROGRAM 1

```
% Image morphology on pelicans and egrets

% Clear all variables and figure windows
close all;
clear all;
r =0;
c =0;

% Read input image and delete sky pixels
a=imread('Birds 006.jpg');
%imwrite(a,'rgb.jpg','jpg');
figure(1),pixval(imshow(a),'on');
NP=60; % Size of window for local threshold is NP * NP
No_rows=101; %-1 is the number of rows deleted
S=size(a);
for p=No_rows:S(1)
    r=r+1;
    c=0;
    for q=1:S(2)
        c=c+1;
        for k=1:3
            I(r,c,k)=a(p,q,k);
        end
    end
end
figure(2),pixval(imshow(I));
I=double(I);
s=size(I);

% Add 200 rows and cols
b=zeros(s(1)+200,s(2)+200);
for i=101:s(1)+100
    for j=101:s(2)+100
        for k=1:3
            b(i,j,k)=I(i-100,j-100,k);
        end
    end
end
b=uint8(b);
figure(3),pixval(imshow(b));
```

```

%figure(2),pixval(imshow(a1),'on');
h1=rgb2hsv(b);
figure(4),pixval(imshow(h1),'on');
%imwrite(h1,'hsv.jpg','jpg');
s1=size(h1);

```

**% Local threshold using HSV color space**

```

c=zeros(s1(1),s1(2));
for i=101:s1(1)-100
    for j=101:s1(2)-100

        if h1(i,j,1)<=0.7 && h1(i,j,2)<=0.08 && h1(i,j,3)>=.93

            for p=i:i+NP

                for q=j:j+NP
                    if (h1(p,q,1) <=.5 || h1(p,q,2) <=.5) && h1(p,q,3)>=.8
                        for m=1:3
                            c(p,q,m)=h1(p,q,m);
                        end
                    else
                        for d=1:3
                            c(p,q,d)=0;
                        end
                    end
                end
            end
        end

    end

end

end

end

figure(5),pixval(imshow(c),'on');
s2=size(c);
imwrite(c,'hsv.jpg','jpg');
c1=hsv2rgb(c);
%figure(6),pixval(imshow(c1));
c1=rgb2gray(c1);

```

**% Noise removal and size threshold**

```
bw = bwareaopen(c1,50);  
sb=size(bw);
```

**% Remove the added pixels**

```
I1=zeros(sb(1)-200,sb(2)-200);  
for i=101:sb(1)-100  
    for j=101:sb(2)-100  
        I1(i-100,j-100)=bw(i,j);  
    end  
end  
%figure(7),pixval(imshow(I1),'on');
```

**% Add null pixels in place of previously removed pixels of sky**

```
s3=size(I1);  
I2=zeros(s3(1)+100,s3(2));  
for i=1:s3(1)+100  
    for j=1:s3(2)  
        if i<=100  
            I3(i,j)=0;  
        else  
            I3(i,j)=I1(i-100,j);  
        end  
    end  
end  
I1=I3;
```

**% Define string functions to dilate i.e. set the border**

```
se90 = strel('line', 3, 90);  
se0 = strel('line', 3, 0);  
BWsdil = imdilate(I1, [se90 se0]);  
%figure(10), imshow(BWsdil), title('dilated gradient mask');
```

**% Fill the holes**

```
BWdfill = imfill(BWsdil, 'holes');  
figure(11), imshow(BWdfill);  
title('binary image with filled holes');  
%imwrite(BWdfill,'C:\MATLAB6p5\work\Morphology\Outputs\afterholes.jpg','jpg');
```

```

% Calculate the number of objects in an image
[labeled,numObjects] = bwlabel(BWdfill,4);
numObjects
I=BWdfill;

```

```

% Divide image into 3 parts and locate birds

```

```

s=size(I);
sum_1=0;
Img_1=zeros(s(1),s(2)/3);
for i=1:s(1)
    for j=1:round(s(2)/3)
        Img_1(i,j)=I(i,j);
        if I(i,j)~=0
            sum_1=sum_1+1;
        end
    end
end
sum_image(1)=sum_1;
figure(11),pixval(imshow(I),'on');
figure(12),pixval(imshow(Img_1),'on');

sum_2=0;
Img_2=zeros(s(1),s(2)/3);
for i=1:s(1)
    for j=round(s(2)/3)+1:2*round(s(2)/3)
        Img_2(i,j-round(s(2)/3))=I(i,j);
        if I(i,j)~=0
            sum_2=sum_2+1;
        end
    end
end
sum_image(2)=sum_2;
figure(13),pixval(imshow(Img_2),'on');

sum_3=0;
Img_3=zeros(s(1),s(2)/3);
for i=1:s(1)
    for j=2*round(s(2)/3)+1:round(s(2))
        Img_3(i,j-2*round(s(2)/3))=I(i,j);
        if I(i,j)~=0
            sum_3=sum_3+1;
        end
    end
end
sum_image(3)=sum_3;

```



```
figure(14),pixval(imshow(Img_3),'on');
```

```
% Determine the location of bird based on the maximum number of pixels in an image
```

```
max_image=max(sum_image);  
if max_image == sum_1  
    output=1  
else if max_image==sum_2  
    output=2  
else if max_image==sum_3  
    output=3  
else output=4  
end  
end  
end
```

## **IMAGE MORPHOLOGY–PROGRAM 2**

```
% Image morphology on cormorants
```

```
% Clear all variables and figure windows
```

```
close all;  
clear all;  
r=0;  
c=0;
```

```
% Read input image and delete sky pixels
```

```
a=imread('cormorants_31.jpg');  
%imwrite(a,'rgb.jpg','jpg');  
figure(1),pixval(imshow(a),'on');  
NP=60; % Size of window for local threshold is NP * NP  
No_rows=101; %-1 is the number of rows deleted  
S=size(a);
```

```
for p=No_rows:S(1)  
    r=r+1;  
    c=0;  
    for q=1:S(2)  
        c=c+1;  
        for k=1:3  
            I(r,c,k)=a(p,q,k);  
        end  
    end  
end
```

```

end
%figure(2),pixval(imshow(I));
a=double(I);
s=size(a);

% Add 200 rows and cols
b=zeros(s(1)+200,s(2)+200);
for i=101:s(1)+100
    for j=101:s(2)+100
        for k=1:3
            b(i,j,k)=a(i-100,j-100,k);
        end
    end
end
end
b=uint8(b);
figure(3),pixval(imshow(b));
%figure(2),pixval(imshow(a1),'on');
h1=rgb2hsv(b);
figure(4),pixval(imshow(h1),'on');
%imwrite(h1,'hsv.jpg','jpg');
s1=size(h1);

% Local threshold using HSV color space
c=zeros(s1(1),s1(2));
for i=101:s1(1)-100
    for j=101:s1(2)-100

        if (h1(i,j,1)>=.67 && h1(i,j,1)<=0.7 && h1(i,j,3)<=0.2)|| (h1(i,j,1)<=0.444 &&
h1(i,j,1)>0.3 && h1(i,j,3)<=0.23)|| (h1(i,j,1)>=0.95 || h1(i,j,1)<=0.16 && h1(i,j,3)<=0.23)
            for p=i:i+NP
                for q=j:j+NP
                    if (h1(p,q,1)>0.3 && h1(p,q,1) <=0.5 && h1(p,q,3)<=0.23) ||
(h1(p,q,1)>0.62 && h1(p,q,1)<0.7 && h1(p,q,3)<=0.23) || (h1(p,q,1) >= .85 &&
h1(p,q,3)<=0.23) || (h1(p,q,1)<0.15 && h1(p,q,3)<=0.23)
                        for m=1:3
                            c(p,q,m)=h1(p,q,m);
                        end
                    else
                        for d=1:3
                            c(p,q,d)=0;
                        end
                    end
                end
            end
        end
    end
end
end

```

```

        end
    end
end

figure(5),pixval(imshow(c),'on');
s2=size(c);
c1=hsv2rgb(c); % Write the color to grey converted image as jpeg
figure(6),pixval(imshow(c1));
%imwrite(c1,'thresgrey.jpg','jpg');
c1=rgb2gray(c1);

% Noise removal and size threshold
bw = bwareaopen(c1,50);
figure(7),pixval(imshow(bw),'on');
% figure(8),
% subplot(1,2,1); imshow(c1);
% subplot(1,2,2); imshow(bw);

% Remove the added pixels
sb=size(bw);
I1=zeros(sb(1)-200,sb(2)-200);
for i=101:sb(1)-100
    for j=101:sb(2)-100
        I1(i-100,j-100)=bw(i,j);
    end
end
figure(8),pixval(imshow(I1),'on');

% Add null pixels in place of previously removed pixels of sky
s3=size(I1);
I2=zeros(s3(1)+100,s3(2));
for i=1:s3(1)+100
    for j=1:s3(2)
        if i<=100
            I3(i,j)=0;
        else
            I3(i,j)=I1(i-100,j);
        end
    end
end
end
end
I1=I3;

```

```

% Define string functions to dilate i.e set the border
se90 = strel('line', 3, 90);
se0 = strel('line', 3, 0);
BWsdil = imdilate(I1, [se90 se0]);
figure(10), imshow(BWsdil), title('dilated gradient mask');

```

```

% Fill the holes
BWdfill = imfill(BWsdil, 'holes');
figure(11), imshow(BWdfill);
title('binary image with filled holes');
imwrite(BWdfill,'holes.jpg','jpg');

```

```

% Calculate the number of objects in an image
[labeled,numObjects] = bwlabel(BWdfill,4);
numObjects
I=BWdfill;

```

```

% Divide image into 3 parts and locate birds

```

```

s=size(I);
sum_1=0;
Img_1=zeros(s(1),s(2)/3);
for i=1:s(1)
    for j=1:round(s(2)/3)
        Img_1(i,j)=I(i,j);
        if I(i,j)~=0
            sum_1=sum_1+1;
        end
    end
end
sum_image(1)=sum_1;
figure(11),pixval(imshow(I),'on');
figure(12),pixval(imshow(Img_1),'on');

sum_2=0;
Img_2=zeros(s(1),s(2)/3);
for i=1:s(1)
    for j=round(s(2)/3)+1:2*round(s(2)/3)
        Img_2(i,j-round(s(2)/3))=I(i,j);
        if I(i,j)~=0
            sum_2=sum_2+1;
        end
    end
end

```

```

    end
end
sum_image(2)=sum_2;
figure(13),pixval(imshow(Img_2),'on');

sum_3=0;
Img_3=zeros(s(1),s(2)/3);
for i=1:s(1)
    for j=2*round(s(2)/3)+1:round(s(2))
        Img_3(i,j-2*round(s(2)/3))=I(i,j);
        if I(i,j)~=0
            sum_3=sum_3+1;
        end
    end
end
end
sum_image(3)=sum_3;
figure(14),pixval(imshow(Img_3),'on');

```

**% Determine the location of bird based on the maximum number of pixels in an image**

```

max_image=max(sum_image);
if max_image == sum_1
    output=1
else if max_image==sum_2
    output=2
    else if max_image==sum_3
        output=3
    else output=4
    end
end
end
end

```

## **ARTIFICIAL NEURAL NETWORK MODEL**

**% Artificial neural network model to recognize all species**

**% Clear workspace and close all matlab windows**

```

close all;
clear all;
clear img;

```

```

% Initilize all the variables
epochs=1000;
nbirds=4;           % Number of bird images to be trained
nnonbirds=3;       % Number of non bird images to be trained
ntotal=nbirds+nnonbirds;
ninputs=13000;     % Total inputs is No of rows * No of columns
nHidden=5;         % Number of hidden layers
max_row=100;       % Number of rows in the input image to be trained
max_column=130;    % Number of columns in the input image to be trained
master=[];
Th=0.4;           % Threshold value to seperate bird and non bird images

```

```

% Read the images from directory and create a master matrix

```

```

fext='.jpg';
uigetdir='C:\MATLAB6p5\work\NN\';
d=uigetdir;
f=dir([d filesep '*' fext]);
for y = 1 : (ntotal)
    fnam=f(y).name
    img{y}=imread(fnam,'jpg');
    %img{y}=double(img{y});
    u=0;
    for p=1:max_row
        for q=1:max_column
            u=u+1;
            master(u,y)=img{y}(p,q);
        end
    end
end
master=(0.9/255)*master;
for x=1:ninputs
    for y=1:ntotal
        if master(x,y)==0
            master(x,y)=0.1;
        end
    end
end
end

```

```

% Adjust the weight matrix so that the total weight is very less

```

```

val=-0.03;
for g=1:nHidden
    for h=1:ninputs
        W1(g,h)=val;
        val=val+.001;
    end
end

```

```

        if val==0
            val=val+0.01
        end
        if val>0.03
            val=-0.03;
        end
    end
end
end

```

```

g=1;
val=-0.03;
for h=1:nHidden
    W2(g,h)=val;
    B1(h,g)=val;
    val=val+.001;
    if val>0.03
        val=-0.03;
    end
end
end

```

```

B2=-0.01;

```

## **% Training Phase**

```

% For bird nodules t=0.9 and for non-bird nodules t=0.1

```

```

error=0.5;
i=1;
eta=0.5;
while ((i<epochs)&&(error>0.2))
    i=i+1;
    i
    error
    for j=1:ntotal
        if j<=nbirds
            t=0.9;
        else
            t=0.1;
        end
        ip=master(:,j);

        o1 = logsig(W1 * ip + B1);
        o2 = logsig(W2 * o1 + B2);
        out2(j)=o2;

        errorval(j)=(t-o2);
    end
end

```

```

error=max(errorval);

delta2 = (dlogsig((W2 * o1 + B2),o2))*(t - o2);
delta1 = zeros(nHidden, 1);
for k = 1 : nHidden
    delta1(k) = dlogsig(((W1 * ip) + B1),o1(k)) * W2(k) * delta2;
end
W1 = W1 + eta * (delta1 * (ip)');
B1 = B1 + eta * delta1;
W2 = W2 + eta * (delta2 * (o1)');
B2 = B2 + eta * delta2;
end

```

### **% Testing Phase**

```

y=[];
j1=0;
out1=[];
correct_c = 0;
correct_nc = 0;

```

### **% For bird nodules**

```

for j=1:nbirds
    ip = master(:, j);
    t = 1;
    o1 = logsig(W1 * ip + B1);
    o2 = logsig(W2 * o1 + B2);
    out1(j)=o2;
    if o2 > Th
        op = 1;
    else
        op = 0;
    end
    o2
    if t == op
        correct_c = correct_c + 1;
    end
end
end

```

### **% for non bird nodules**

```

for j=(nbirds)+1:(ntotal)
    ip = master(:, j);
    t = 0;
    o1 = logsig(W1 * ip + B1);
    o2 = logsig(W2 * o1 + B2);
    out1(j)=o2;

```



```

    if o2 > Th
        op = 1;
    else
        op = 0;
    end
    o2
    if t == op
        correct_nc = correct_nc + 1;
    end
end

acc = (correct_nc + correct_c) / ntotal;
y = [y acc];
end

```

### **% Accuracy Vs epochs plot**

```

plot(1 : epochs, y);
legend('Accuracy');
xlabel('Epochs');
ylabel('Accuracy (in %)');
title('Accuracy (in %) versus Epochs');

```

## **TEMPLATE MATCHING MODEL**

### **% Clear all variables and figure windows**

```

close all;
clear all;
clear img;
C=0;
r=0;
c=0;
No_rows=151;          %-1=No of rows removed

```

### **% Read input image and delete sky pixels**

```

B = imread('C:\Documents and Settings\Uma Nadimpalli\Desktop\Temp\lake_8.jpg'); %
Input image
B=rgb2gray(B);
%figure(1),imshow(B);
S=size(B);
for p=No_rows:S(1)
    r=r+1;
    c=0;

```

```

    for q=1:S(2)
        c=c+1;
        I(r,c)=B(p,q);
    end
end
%figure(2),imshow(I);
I=double(I);

% Read all template images from the file and compute normal correlations
fext='.jpg';           % Reads all the images in the directory with extension
                        .jpg
uigetdir='C:\MATLAB6p5\work\Temp Matching';
                        % Directory from which we read all templates

d=uigetdir;
f=dir([d filesep '*' fext]);
sum=0;
Average=0;
count_60=0;
count_65=0;
count_70=0;
count_75=0;
count_80=0;
count_85=0;
count_90=0;
count_95=0;

l=1;
for i=1:length(f)

    fnam=f(i).name;
    disp(sprintf('reading <%s>',fnam));
    img{i}=imread(fnam,'jpg');           % Templates
    A=img{i};
    A=rgb2gray(A);
    A=double(A);
    %Compute the cross-correlation of A and B
    C = normxcorr2(A,I);                 % xcorr2(A,B);
    %with normxcorr2, Normal correlation, if B is found exactly, then max(C(:)) == 1
    corr(i)=max(C(:));
    sum=sum+corr(i);

    if corr(i)>0.6
        count_60=count_60+1;
    end
end

```

```

if corr(i)>0.65
    count_65=count_65+1;
end

if corr(i)>0.7
    count_70=count_70+1;
end

if corr(i)>0.75
    count_75=count_75+1;
end

if corr(i)>0.8
    count_80=count_80+1;
end

if corr(i)>0.85
    count_85=count_85+1;
end

if corr(i)>0.9
    count_90=count_90+1;
end

if corr(i)>0.95
    count_95=count_95+1;
end

end
Average=sum/length(f);

```

## **AUTOMATION OF IMAGE MORPHOLOGY ALGORITHM**

```

% Clear all variables and figure windows
close all;
clear all;
r=0;
c=0;

% Set input parameters and Read input image
fext='.jpg';
uigetdir='C:\MATLAB6p5\work\Automation';
d=uigetdir;
f=dir([d filesep '*' fext]);

```

```

pause_time=20;
l=1;
for No=1:1000

    fnam{No}=f(No).name;
    a=imread(fnam{No});
    a=double(a);

% Remove sky pixels
    No_rows=101; %-1 is the number of rows deleted
    S=size(a);
    I2=zeros(S(1)-100,S(2));
    for p=No_rows:S(1)
        r=r+1;
        c=0;
        for q=1:S(2)
            c=c+1;
            for k=1:3
                I2(r,c,k)=a(p,q,k);
            end
        end
    end
    I2=uint8(I2);
    figure(2),pixval(imshow(I2));
    I2=double(I2);
    s=size(I2);

% Add 200 rows and cols
    b=zeros(s(1)+200,s(2)+200);
    for i=101:s(1)+100
        for j=101:s(2)+100
            for k=1:3
                b(i,j,k)=I2(i-100,j-100,k);
            end
        end
    end
    b=uint8(b);
    figure(3),pixval(imshow(b));
    %figure(2),pixval(imshow(a1),'on');
    h1=rgb2hsv(b);
    %figure(4),pixval(imshow(h1),'on');
    %imwrite(h1,'hsv.jpg','jpg');
    s1=size(h1);

```

```

% Local threshold using HSV color space
NP=60;          % Local Window size is NP*NP
c=zeros (s1(1),s1(2));

for i=101:s1(1)-100
    for j=101:s1(2)-100

        if h1(i,j,1)<=0.7 && h1(i,j,2)<=0.08 && h1(i,j,3)>=.93

            for p=i:i+NP
                for q=j:j+NP
                    if (h1(p,q,1) <=.5 || h1(p,q,2) <=.5) && h1(p,q,3)>=.8
                        for m=1:3
                            c(p,q,m)=h1(p,q,m);
                        end
                    else
                        for d=1:3
                            c(p,q,d)=0;
                        end
                    end
                end
            end
        end
    end

    end
end

figure(5),pixval(imshow(c),'on');
s2=size(c);
%imwrite(c,'hsv.jpg','jpg');
c1=hsv2rgb(c);
%figure(6),pixval(imshow(c1));
c1=rgb2gray(c1);

```

**%Noise removal and size thresholding**

```

bw = bwareaopen(c1,50);
sb=size(bw);

```

**%Remove the added pixels**

```

I1=zeros(sb(1)-200,sb(2)-200);
for i=101:sb(1)-100
    for j=101:sb(2)-100
        I1(i-100,j-100)=bw(i,j);
    end
end

```

```

    end
end
%figure(7),pixval(imshow(I1),'on');

% Add null pixels in place of previously removed pixels of sky
s3=size(I1);
I2=zeros(s3(1)+100,s3(2));
for i=1:s3(1)+100
    for j=1:s3(2)
        if i<=100
            I3(i,j)=0;
        else
            I3(i,j)=I1(i-100,j);
        end
    end
end
end
I1=I3;

% Define string functions to dilate i.e. set the border
se90 = strel('line', 3, 90);
se0 = strel('line', 3, 0);
BWsdil = imdilate(I1, [se90 se0]);
%figure(10), imshow(BWsdil), title('dilated gradient mask');

% Fill the holes
BWdfill = imfill(BWsdil, 'holes');
figure(11), imshow(BWdfill);
title('binary image with filled holes');
%imwrite(BWdfill,'C:\MATLAB6p5\work\Morphology\Outputs\afterholes.jpg','jpg');

% Calculate the no of objects in an image
[labeled,numObjects] = bwlabel(BWdfill,4);
numObjects
I=BWdfill;

% Divide image into 3 parts and locate birds
s=size (I);

sum_1=0;
Img_1=zeros(s(1),s(2)/3);
for i=1:s(1)

```

```

    for j=1:round(s(2)/3)
        Img_1(i,j)=I(i,j);
        if I(i,j)~=0
            sum_1=sum_1+1;
        end
    end
end
sum_image(1)=sum_1;
figure(11),pixval(imshow(I),'on');
figure(12),pixval(imshow(Img_1),'on');

sum_2=0;
Img_2=zeros(s(1),s(2)/3);
for i=1:s(1)
    for j=round(s(2)/3)+1:2*round(s(2)/3)
        Img_2(i,j-round(s(2)/3))=I(i,j);
        if I(i,j)~=0
            sum_2=sum_2+1;
        end
    end
end
sum_image(2)=sum_2;
figure(13),pixval(imshow(Img_2),'on');

sum_3=0;
Img_3=zeros(s(1),s(2)/3);
for i=1:s(1)
    for j=2*round(s(2)/3)+1:round(s(2))
        Img_3(i,j-2*round(s(2)/3))=I(i,j);
        if I(i,j)~=0
            sum_3=sum_3+1;
        end
    end
end
sum_image(3)=sum_3;
figure(14),pixval(imshow(Img_3),'on');

```

**% Determine the location of object based on maximum number of pixels in an image**

```

max_image=max(sum_image);
if max_image == sum_1
    output=1
else if max_image==sum_2
    output=2
else if max_image==sum_3

```

```
        output=3
    else output=4
    end
end
end
end
```

**% Clear variables**

```
pause(pause_time);
I=0;
clear a;
clear b;
clear c;
clear I2;
clear s;
S=0;
clear sum_1;
clear sum_2;
clear sum_3 sum_4;
clear max_image output sum_image;
r=0;c=0;
clear fnam{No};
```

**% End the program**

```
fext='.jpg';
uigetdir='C:\MATLAB6p5\work\Automation';
d=uigetdir;
f=dir([d filesep '*' fext]);
end
```



## APPENDIX B – PAST RESEARCH ON OBJECT RECOGNITION

Year	First Author	Work Area	Applications
2004	Neethirajan	Image processing using X-ray images	Studied airflow paths in wheat samples
2003	Griepentrog	Autonomous vehicles	Weeding and Spraying
2003	Simpson	Unmanned Aerial Vehicle	precision agriculture
2003	Aitkenhead	Neural network	Discriminate plants and weeds
2003,2002,2001	Price	Autonomous vehicle and machine vision	Detect and disperse birds
2003,2002,2001	Hall	Autonomous vehicle and machine vision	Detect and disperse birds
2003	Bostelman	Autonomous vehicle and image processing using edge detection	Runs on road by tracking painted stripes
2003	Hatem	Image processing using HSV color space	Cartilage and bone segmentation in vertebra images for grading beef
2002	Kise	Autonomous tractor and image processing	Obstacle detection system
2002	Morimoto	Autonomous vehicle and image processing using HSV color model	Runs on the road and detects the obstacles in the path
2002,2001	Nishiwaki	Autonomous vehicle and vision system for template matching	Estimate plant positions
2002	Xinwen	Image processing using gray level images	Measurement of geometric features of insects
2002	Kavdir	Artificial neural networks	Sorting of apples based on surface quality conditions
2002	Blackmore	Autonomous vehicle	mechanical weeding and field scouting
2001,1992	Casasent	Image processing	Extract nut meat from nuts
2001	Tao	Image processing using X-ray imaging	detect the foreign objects in deboned meat
2001	Kim	Image processing	detect pinholes in almonds
2001	Bulanon	Color segmentation using image processing	Recognize Fuji apples
2001	Liu	Image processing using	Vision based stop sign

		HSV color model and neural networks	detection system
2001	Lee	Image processing and artificial neural networks	Extraction of lean tissue from the carcass beef
2001	Gliever	Artificial neural networks	robotic weed control system
2001	Hemming	Color image processing	Weed identification
2001	Thiang	Template matching	Vehicle recognition
2000	Chang	Template matching	Face recognition
2000	Liu	Image processing	Measure the whiteness of corn kernel
2000	El-Faki	Neural networks Color machine vision	Detection of weeds in wheat and soybean fields
2000	Price	Image processing using HSV color space	Robot
1999	Leemans	Machine vision	Defect segmentation on Jonagold apples
1998	Bakircioglu	Artificial neural networks	Automatic target detection
1998	Batra	Image analysis	Identification of Africanized honeybees
1997	Hansen	Color image processing using HSV	Differentiation of wound severity
1996	Ruiz	Image processing using color	Discriminate stemmed and de-stemmed oranges
1996	Soren	Image texture	Segmentation of test sites in an image

## **APPENDIX C – IMAGE PROCESSING TECHNIQUES FOR RECOGNITION OF BIRDS IN AQUACULTURAL SETTINGS**

Bird predation is one of the major concerns for fish culture in open ponds. A novel method for dispersing birds is the use of autonomous vehicles. Image recognition software can improve their efficiency. Several image processing techniques for recognition of birds have been tested. A series of morphological operations were implemented. We divided images into 3 types: Type 1, Type 2, and Type 3 based on the level of difficulty of recognizing birds. These types were clear, medium clear and unclear respectively. Local thresholding has been implemented using HSV (Hue, Saturation and Value), GRAY and RGB (Red, Green and Blue) color models on all three sections of images and results tabulated. Template matching using normal correlation and artificial neural networks (ANN) are other methods that have been developed in this study besides image morphology. Template matching produced satisfactory results irrespective of the difficulty level of images but artificial neural networks (ANN) produced accuracies of 100%, 60% and 50% on Type 1, Type 2 and Type 3 images respectively. Correct classification rate can be increased by further training of ANN model . Future research will focus on testing the recognition algorithms in natural or aquacultural settings on autonomous boats.

**Keywords** Image processing, Recognition, Morphology, Neural networks, Template matching, Aquaculture.

**Note: This manuscript was admitted for publication in Biotech progress in March 2005.**

## **Ac.1 Introduction**

Bird predation is one of the major concerns for fish culture in open ponds. Birds such as pelicans, egrets, cormorants and herons arrive in flocks to consume abundant fish in aquacultural ponds. Littauer et al. (1997) estimated that one egret can eat 1/3 pound of fish per day, while a great heron can consume 2/3 pound of fish per day. Several methods of controlling bird predation such as shooting and poisoning were ineffective or unfriendly to the environment (Hall et al., 2001). Further, other birds such as *Pelecanus erythrorhynchos* (American white pelican) and *Pelecanus occidentalis* (brown pelican) are either endangered or protected species. They can be driven off from aquacultural ponds but should not be killed (Migratory Bird Treaty Act, 1918 and Endangered Species Act, 1973). A novel method for dispersing birds would be an autonomous boat that recognizes the bird including location. The Biological and Agricultural Engineering Department at the Louisiana State University developed a semi-autonomous boat for chasing birds in the lake and measuring properties such as dissolved oxygen (DO), biochemical oxygen demand (BOD) etc. Random motion worked well but chasing birds was a challenge. Machine vision system on the semi-autonomous boat encountered several problems. It worked well in the laboratory, but when taken outside, it faced problems due to the brightness with intense sunlight. The machine vision system also had problems due to the white color of birds. This necessitated more image processing algorithms that would be suitable under all conditions.

Developing image-processing algorithms that work under all conditions could be a better solution. These algorithms may also reduce unnecessary wandering of the boat in the absence of birds, which saves solar power that the boat uses during cloudy or partly

sunny conditions. Three algorithms, namely image morphology, artificial neural networks, and template matching have been developed and tested for this project. We used the pictures taken by the semi-autonomous boat, some manually taken by our team near the lakes and ponds, and some from the internet to test the efficacy of developed algorithms.

## **Ac.2 Background and Literature Review**

Object recognition is a broad area that can be implemented using several techniques and image processing is one of those techniques. Several researchers have used image-processing techniques in the past for object recognition. Image morphology is an image processing technique commonly used for recognizing objects in a systematic procedure. Several color models have been used in image morphology each having its own advantages and limitations. The most frequently used color models in image processing are GRAY, RGB, and HSV. Thresholding is an initial step in image morphology and implementing it on gray scale image is the simplest and oldest of all thresholding processes. Researchers who have worked on image morphology using gray scale images are Casasent et al. (2001), Kim et al. (2001), Batra (1998) and Neethirajan et al. (2004). Each pixel in a gray scale image is represented in terms of intensity. Therefore, threshold value on such images can be fixed using only intensity.

Other color models commonly used are Red Green Blue (RGB) and Hue Saturation Value (HSV). RGB has the advantage of fixing the threshold based on three parameters namely Red, Green, and Blue. Bulanon et al. (2002) developed a segmentation algorithm to segment Fuji apples based on red color difference between objects in an image. Leemans et al. (1999), El-Faki et al. (2000) and Lezoray et al. (2003)

also worked on RGB images. Like gray level thresholding, color thresholding on RGB images is also intensity variant.

Sural et al. (2002) found that RGB thresholding blurs the distinction between two visually separable colors by changing brightness. HSV color space on the other hand can determine the intensity and shade variations and retain pixel information. Hemming and Rath (2001) worked on weed identification, Hatem et al. (2003) on cartilage and bone identification, Price et al. (2000) on a robot known as Monash humoniod, and Lee et al. (2001) on extraction of lean tissue from the carcass beef. Other morphological operations follow thresholding for efficient removal of other pixels and retain bird pixels.

Besides image morphology, commonly used methods that gained wide range popularity in many object recognition algorithms are ANN's (artificial neural networks). Aitkenhead et al. (2003) used a simple ANN to discriminate plants and weeds using plant size as a parameter. Pre-processing the image resulted in removal of noise pixels, whose presence would have slowed down the recognition process. Bakircioglu et al. (1998) implemented automatic target detection using ANN's to detect the targets in the presence of clutter. Gliever et al. (2001) implemented a weed detection algorithm using a neural network-based computational engine for a robotic weed control system to discriminate cotton and weeds and achieved good accuracies.

Another method that has gained popularity in the recent years is object recognition using template matching. Template matching is a method of comparing/correlating an input image with a standard set of images known as templates. Nishiwaki et al. (2001) used machine vision to recognize the crop positions using template matching. Chang et al. (2000) developed template-matching algorithm in order

to match parts of the image corresponding to skin region and template face. Thiang et al. (2001) have developed vehicle (car) recognition using camera as a sensor. Results showed a good similarity level, of about 0.9 to 0.95 during daylight and 0.8 to 0.85 at night.

Researchers concentrated mostly on accurate detection and differentiation of several objects such as weeds, soil, plants, etc. from the background using several techniques. No published research has been done on bird recognition followed by the use of such recognition software to disperse birds from the lakes. The Biological and Agricultural Engineering Department at the Louisiana State University Agricultural Center developed a semi-autonomous boat for chasing birds in aquacultural stations (Price, and Hall (2000, 2002), Hall and Price (2003 a, b, c), and Hall et al (2001, 2004, 2005)). One major advantage of this semi-autonomous boat is that the solar power saved during the daytime can be used by boat in the absence of solar power. This allows the boat to operate for weeks or months at a time. Other applications of semi-autonomous boats include measuring water quality and locating the position of the boat (using Global Positioning System) in lakes and ponds (Hall et al., 2005). They used a machine vision system, designed by LEGO VISION COMMAND™, to identify and chase birds. Random motion worked well but chasing birds was a challenge. A novel method for efficient chasing of birds is the development of different bird recognition methodologies and using these algorithms on semi-autonomous boats to chase birds. Some among them are image morphology, artificial neural networks (ANN) and template matching. Each algorithm is explained in detail in the following section.

### **Ac.3 Implementation Methodology**

Pictures of birds taken by a camera mounted on semi-autonomous boat (Price, and Hall (2000, 2002), Hall and Price (2003 a, b, c), and Hall et al (2001, 2004, 2005)), some obtained from the internet and some acquired locally were used in the study. Image-processing and neural network toolboxes of MATLAB<sup>®</sup> 6p5 (Math Works, 2005) were used for developing and testing all the algorithms. The three object recognition algorithms developed for the study are

1. Image morphology
2. Artificial Neural Networks(ANN's)
3. Template matching

For this paper, development of the relevant methodologies and preliminary evaluation of these three methods were the objectives.

#### **Ac.3.1 Image Morphology**

The first among these methods is image morphology. This is a tool for extracting useful information (or removing unnecessary information) from a picture in a step-by-step procedure. The basic step in any image processing technique is thresholding that removes extra and redundant information, also known as noise, from an image. Several objects in an image contribute to noise. For instance, in an image containing birds such as pelicans and egrets, the pixels containing the sky contributed to noise. These pixels are called sky pixels. Most pixels containing the sky and birds (especially when the birds were white such as egrets and pelicans) had the same intensity. A recognition algorithm might misinterpret with the sky color as bird pixels. Removing all possible sky pixels from picture is crucial. To do the operation, rows in an input image are cut to remove the



sky pixels. Other steps were also implemented in image morphology in detail in the following algorithm.

- 1) Acquire an image.
- 2) Convert to required color space.
- 3) Remove sky pixels.
- 4) Add required rows and columns so that the last few pixels will have sufficient neighbors for comparison.
- 5) Read pixels one by one.
- 6) Retain pixels whose value cross threshold 1.
- 7) Consider a window of required size (for e.g. 60 by 60) by taking pixel in step 6 as the first pixel.
- 8) Within the window, retain only the pixels that cross threshold 2 and color other pixels to black.
- 9) Convert the image to gray level and remove objects of smaller size, rows, and remove extra rows and columns.
- 10) Continue the process until last pixel is scanned.

We implemented local thresholding as described on selected color spaces and compared the performances of each color space. Local threshold that used two threshold values has been chosen since a single threshold value might result in more noise pixels.

The other method implemented is Artificial Neural Networks (ANN's).

### Ac.3.2 Artificial Neural Networks

A feed forward back propagation neural network with 5 hidden layers was designed. The number of elements in the input layer was from number of rows of the

input image multiplied by the number of columns. For each testing image output values after log sigmoid function ranged from 0.1 to 0.9. A threshold value of 0.4 is fixed and we consider the presence of birds if the output crosses threshold. The output layer is the final layer and it indicates the presence/absence of birds in the tested image. Neural networks learn through a training process and the success of artificial neural networks depends on training.

Figure Ac.1 represents a general model of ANN. Signal at each layer is multiplied by corresponding weights followed by the addition of bias at the end of each layer.

The value of  $a_k$  in the figure can be represented as

$$a_k = \sum_{k=1}^m \sum_{j=1}^n \sum_{i=1}^n (p_i * wk_{ij}) + b_{1k}$$

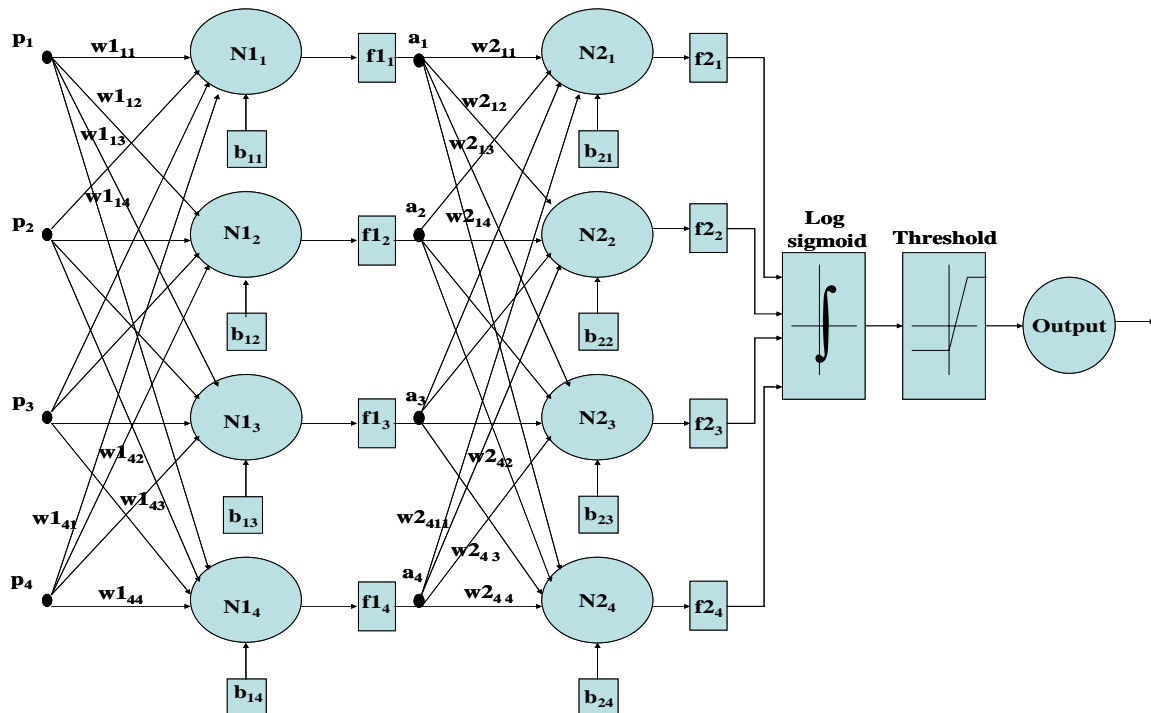


Fig: Ac.1. A generalized model of an artificial neural network

In this training process, each input is multiplied by the corresponding weights followed by the addition of bias after each layer. ANN's output ranges from 0.1 to 0.9. Error is calculated and propagated back. This entire process completes an epoch. Training continues until error is less than 0.1 or number of epochs is greater than 1000. In the testing phase signal passes threshold function and based on threshold the presence/absence of birds in the input image is decided.

Another method implemented besides image morphology and ANN's is template matching.

### Ac.3.3 Template Matching

Template matching is a method of comparing an input image with a standard set of images known as templates. Templates are bird parts cut from various pictures. Normal correlation between the input image and each template image is calculated. Correlation according to Gonzalez et al. (2003) is

$$f(x, y) \circ h(x, y) = \frac{1}{MN} \sum_{m=0}^{M-1} \sum_{n=0}^{N-1} f^*(m, n)h(x + m, y + n)$$

Where  $f(x, y)$  and  $h(x, y)$  are two images of size  $M \times N$  and  $f^*$  is the complex conjugate of  $f$ .

We illustrate a brief working of template matching in the figure 1.2. This technique compares two images to decide if the desired shape (bird or bird part) is present. We move the each template image from one pixel to other as shown in figure Ac.2 and calculate (record) the maximum correlation/dot product between the template and the input image.

1,1	1,2	1,3	1,4	○	○							○	○	1,n
2,1	1,1	1,2	●	●	1,q	→								2,n
3,1	2,1	2,2	●	●	2,q	→								3,n
4,1	3,1	3,2	●	●	3,q	→								4,n
○	●	●	●	●	●	→								○
○	p,1	p,2	●	●	p,q	→								○
○														○
○														○
m,1	m,2	m,3	m,4	○	○							○	○	m,n

**Fig: Ac.2. The template matching technique**

A threshold correlation value is fixed and if the maximum normal correlation between input image and any template is above the threshold value, the input image has bird(s). Accurate recognition of birds requires the use of a large number of template images that could represent most angles and sizes of birds under different lighting conditions as template matching is not invariant to rotation, size etc.

### Ac.4 Results and Discussion

All images haven been divided into 3 types: a) Type 1, b) Type 2, and c) Type 3 based on the level of difficulty in recognizing birds. In Type 1 images, birds look like the same as they look in-situ, i.e. non moving, clear and easily recognizable. A clear

distinction between birds and back ground was found. Type 2 images were not clear and the distinction between birds and the background was less. Type 3 images were unclear due to blurring of images, a poor quality camera, small size of birds, and movement of camera while shooting birds.

Pictures of birds taken used in the study were obtained by a camera mounted on the semi-autonomous boat (Price, and Hall (2000, 2002), Hall and Price (2003 a, b, c), and Hall et al (2001, 2004, 2005)), some obtained from internet and some acquired locally. Most images were 640 by 480 pixels in size. Images of smaller size were chosen since an engineering compromise had to be made between the processing time of algorithms and the clarity retention of input images. Aspect ratio of all the input images was preserved. Testing was performed on an Intel centrino processor with 256 mega bytes of ram.

#### Ac.4.1 Image Morphology

Input images were converted to gray level, red green and blue (RGB) and hue saturation and value (HSV). For convenience sake, we refer them as gray level, RGB and HSV images in this study.

Size threshold is the method of removing objects of smaller size and is capable of reducing misclassification rate. Therefore, the performance of each color model before and after size thresholding was tabulated. Image morphology algorithm has been tested to calculate correct classification rate (CCR) and misclassification rate (MCR) on all types of input images.

Correct Classification Rate (CCR) is birds recognized divided by birds present in the image.

Misclassification Rate (MCR) is non-birds recognized divided by total objects recognized in the image.

**Table: Ac.1. Image morphology results**

<b>Classification</b>	<b>Size Threshold</b>	<b>Type of Image</b>	<b>Gray Level</b>	<b>RGB</b>	<b>HSV</b>
<b>CCR</b>	<b>Before Size Threshold</b>	Type 1	96.5	86.3	97.7
		Type 2	93.7	85.4	97.9
		Type 3	80.9	80.9	80.9
	<b>After Size Threshold</b>	Type 1	86.3	84.0	97.7
		Type 2	43.7	35.4	91.6
		Type 3	47.6	47.6	62.0
<b>MCR</b>	<b>Before Size Threshold</b>	Type 1	7.8	10.8	13.9
		Type 2	9.5	5.8	4.5
		Type 3	11.7	17.6	29.4
	<b>After Size Threshold</b>	Type 1	2.6	2.7	6.9
		Type 2	0.0	0.0	6.8
		Type 3	20.0	20.0	30.7

#### **Ac.4.1.1 Type 1 Images**

Before size thresholding, image morphology on HSV images produced greater CCR followed by gray level and RGB color models but both HSV and gray level images produced almost the same CCR. After size threshold HSV images produced high CCR compared to RGB and gray level images. The MCR was highest for HSV images and

gray level clear images produced the least MCR irrespective of whether size threshold had been applied or not.

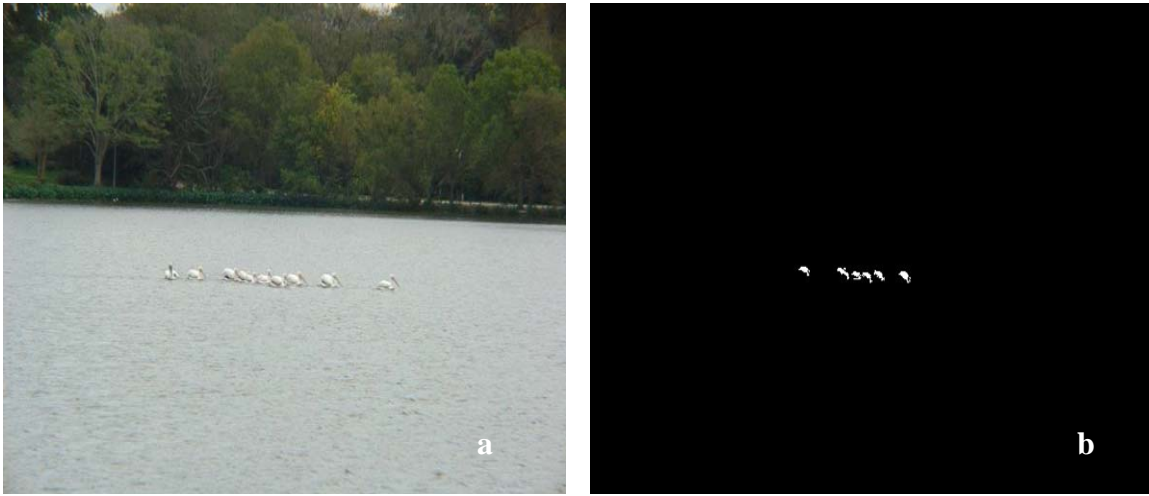
#### **Ac.4.1.2 Type 2 Images**

Image morphology on HSV and gray level images produced similar results. After size threshold CCR of gray level and RGB images drastically dropped. However, the CCR of HSV images remained the best among three at 97.9%. However, this was also accompanied by a slight increase in MCR of HSV images that may not be statically significant in this study.

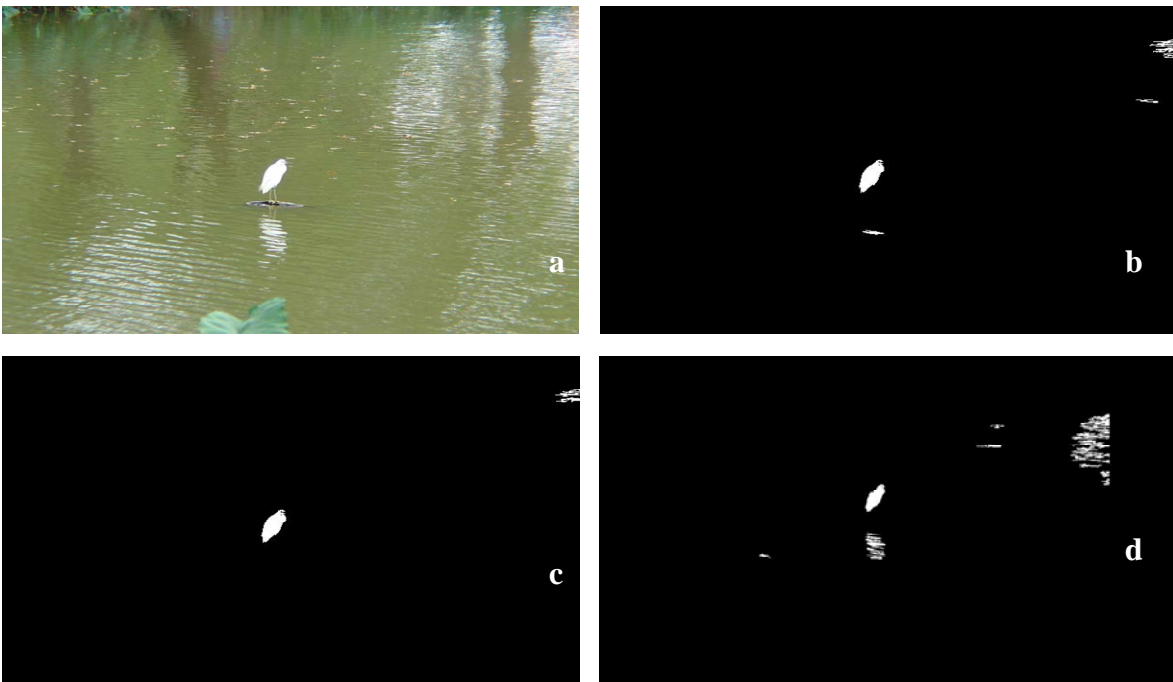
#### **Ac.4.1.3 Type 3 Images**

Image morphology on Type 3 images resulted in equal CCR irrespective of color spaces. However, after size threshold HSV images produced more CCR. HSV images had higher MCR regardless of the application of size threshold.

Overall results from image morphology show that HSV images produced more CCR compared to gray level and RGB images irrespective of the application of size threshold. MCR was high for HSV images regardless of the application of size thresholding. Size threshold reduced the MCR of all images except Type 3. Some of the birds in Type 3 images were small in size (about 5 by 5 pixels). Size threshold in this case would not have resulted in recognition of the birds. The HSV color model can be used in cases where a small amount of misclassification can be tolerated with its high CCR. Even though the misclassification rate was greater with the HSV color space, it was efficient in recognizing birds in some unclear images. Figure Ac.3 represents input image and image after size threshold using HSV color space.



**Fig: Ac.3. Image morphology on Type 3 images a) Sample input image b) image morphology on HSV image**



**Fig: Ac.4. Images after testing morphology algorithm on Type 3 images a) Sample input image b) Image morphology on gray level image c) Image morphology on RGB image d) Image morphology on HSV image**

RGB and GRAY color models using the same algorithm resulted in images without the presence of birds. In this case, birds were present but the algorithm on the RGB and Gray level images could not recognize the birds. Even though the size of birds



was small, image morphology using HSV color space produced accurate results compared to other color models. However, the misclassification rate was more for HSV images as shown in the figure Ac.4.

#### Ac.4.2 Artificial Neural Networks

Input images of size 130 by 100 pixels were trained. Three types of images as discussed previously were used to train ANN's. Images once trained were not used for testing ANN's. Some images of lakes were also used in training and testing because training requires inputs of bird images as well as non bird images. These lake images were also divided into three types. ANN obtained accuracies of 100%, 60%, and 50% on Type 1, Type 2, and Type 3 images respectively.

Type 1 images obtained high accuracies because these images were clear. Type 2 and Type 3 images obtained low accuracies because some images had birds, which were small, and some images contained birds that were not clear due to the movement of platform while using the camera. ANN's may have been unable to make a clear-cut distinction between images with and without birds due to the small size of birds. The results presented on ANN's were obtained by preliminary testing on a few images, therefore accuracy can further be increased by proper selection of bird images for training. In addition to training, clear images can assist the ANN in improving CCR.

#### Ac.4.3 Template Matching

Templates were stored in a database and accessed sequentially for correlating each template image with input image. Three databases (30, 60 and 75) were used to store template images. These were referred to as database 30, database 60 and database

75. Table Ac.2 represents accuracies with varying databases and rows of pixels above the water horizon removed.

**Table: Ac.2. Template matching results**

<b>S.No</b>	<b>Database(No of images)</b>	<b>Rows of Sky Removed</b>	<b>Type of Image</b>	<b>Accuracy (%)</b>
<b>1</b>	30	100	Type 1	90.0
<b>2</b>	30	100	Type 2	90.0
<b>3</b>	30	100	Type 3	40.0
<b>4</b>	30	150	Type 1	90.0
<b>5</b>	30	150	Type 2	70.0
<b>6</b>	30	150	Type 3	50.0
<b>7</b>	60	100	Type 1	90.0
<b>8</b>	60	100	Type 2	80.0
<b>9</b>	60	100	Type 3	80.0
<b>10</b>	60	150	Type 1	100.0
<b>11</b>	60	150	Type 2	55.5
<b>12</b>	60	150	Type 3	80.0
<b>13</b>	75	100	Type 1	87.5
<b>14</b>	75	100	Type 2	66.7
<b>15</b>	75	100	Type 3	66.7
<b>16</b>	75	125	Type 1	100.0
<b>17</b>	75	125	Type 2	66.7
<b>18</b>	75	125	Type 3	70.0

These pixels contributed to misclassification and therefore were included as one of the factors affecting the bird recognition classification rate using template matching.

The algorithm was tested by removing either the first 100 or the first 150 rows from the input image.

Only 125 rows were removed instead of 150 from the input image when the database was 75. This change was due to the presence of few template images in the database that were bigger than the input image after deleting pixels above water horizon. Correlation can be calculated only when the template image is smaller than the input image.

#### **Ac.4.3.1 Type 1 Images**

As shown in the table 1.2, Template matching on Type 1 images produced good accuracies, generally 90 to 100% irrespective of the databases and the number pixels above the water horizon removed.

#### **Ac.4.3.2 Type 2 Images**

Template matching on Type 2 images produced good results when 100 sky pixel rows were removed instead of 150. This may be due to the loss of some valuable information when more rows were removed. In addition, medium clear images produced good results with database 30. This may be due to the presence of objects other than birds, which were similar to birds that correlated well with templates in other databases.

#### **Ac.4.3.3 Type 3 Images**

Accuracy of template matching on Type 3 images increased slightly with an increase in the removal of sky pixels. Images in this case might include more sky pixels and removal of 100 rows would not have been sufficient to remove certain objects, which were not birds. Database 70 which was expected to produce better results compared to

data base 60 did not work as well as expected. This may be due to improper selection of template images in database 70.

Database 60 and 100 rows of sky pixels removed has been considered best among other combinations for the present study. This was because even though accuracies of this algorithm on Type 1 and Type 2 images were slightly less compared to others, this combination maintained its consistency in recognizing all kinds of images equally and with a desired classification rate.

## **Ac.5 Conclusions**

Different image processing techniques have been trained and tested to recognize birds in an image efficiently. Image morphology using HSV color space worked well on all types of images compared to other color spaces. ANN has worked better on Type 1 images than Type 2 and Type 3 images. Accuracies in these cases can be improved by proper training of images. Template matching worked well and produced high accuracy rates.

## **Ac.6 Future Recommendations**

Our bird recognition algorithms have been tested on only two bird species, pelicans and egrets. Other species such as cormorants and herons may be used in future studies. Future research will also focus on testing the recognition algorithms in natural or aquacultural settings on autonomous boats. Finally, the efficacy of using these algorithms in guidance of the autonomous vehicle needs to be evaluated, especially with regards to the speed of operation of each algorithm.

**This paper has been approved as LSU AgCenter publication xxxx-05.**

## Ac.7 References

Aitkenhead, M. J., I. A. Dalgetty, C. E. Mullins, A. J. S. Mc. Donald, and N. J. C. Strachan. 2003. Weed and Crop Discrimination Using Image Analysis and Artificial Intelligence Methods. Computers and electronics in agriculture, Vol 39, Pp 157-171.

Anonymous. 2002. Website: Autonomous Vehicles (<http://www.csois.usu.edu/future/>).

Bakircioglu, H. and E. Gelenbe. 1998. Random Neural Network Recognition of Shaped Objects in Strong Clutter. Proceedings of SPIE-The International Society for Optical Engineering, Vol 33, No 07, Pp 22-28.

Batra, S. W. T. 1988. Automatic Image Analysis for Rapid Identification of Africanized Honey Bees In: Needham, G.R. (ed.), Africanized honey bees and bee mites. E. Horwood, Chichester, West Sussex, England, Pp 260-263.

Blackmore, S., H. Henrik, and F. Spyros. 2002. Specification of Behavioral Requirements for an Autonomous Tractor. Proceedings of the ASAE Conference Chicago, Illinois, USA. Publication number 701P0502, Pp 13-23.

Bostelman, R. 2003. Online Document: NIST Autonomous Vehicles (<http://www.isd.mel.nist.gov/projects/iav/IAV.pdf>).

Bulanon, D. M., T. Kataoka, Y. Ota, and T. Hiroma. 2001. A Segmentation Algorithm for the Automatic Recognition of Fuji Apples at Harvest. Biosystems Engineering, Vol 83, No 4, Pp 405-412.

Casasent, D., A. Talukder, P. Keagy, and T. Schatzki. 2001. Detection and Segmentation of Items in X-Ray Imagery. Transactions of the ASAE, Vol 44, No 2, Pp 337-345.

Chang, H. and U. Robles. 2000. Website: Template Matching (<http://www-cs-students.stanford.edu/~robles/ee368/matching.html>).

El-Faki, M. S., N. Zhang, and D. E. Peterson. 2000. Weed Detection Using Color Machine Vision. Transactions of the ASAE, Vol 43, No 6, Pp 1969-1978.

Endangered Species Act. 1973. Online Document: Endangered Species Act ([http://ecos.fws.gov/tess\\_public/TESSWebpageVipListed?code=V&listings=0#B](http://ecos.fws.gov/tess_public/TESSWebpageVipListed?code=V&listings=0#B)).

Gonzalez, R. C. and R. E. Woods. 2003. Digital Image Processing second edition, Pearson education (Singapore) Pte. Ltd, Delhi, India.

Gliever, C. and D. C. Slaughter. 2001. Crop versus Weed Recognition with Artificial Neural Networks. Presented as Paper number 013104 at ASAE conference, Sacramento, California.

Griepentrog, H. W. and H. Sogaard. 2003. Robotic Weeding in Sugar Beet. Proceedings of the NJF's 22nd Congress Nordic Agriculture in Global Perspective, Turku, Finland.

Grovum, M. A. and G. C. Zoerb. 1970. An Automatic Guidance System for Autonomous Tractors. Presented as Paper number 011191, at ASAE conference, St. Joseph, Miami, USA.

Hatem, I. and J. Tan. 2003. Cartilage and Bone Segmentation in Vertebra Images. Transactions of the ASAE, Vol 46, No 5, Pp 1429-1434.

Hall, S. G., R. Price, and L. Wei. 2001. Design of an Autonomous Bird Predation Reduction Device. Presented as Paper number 01-3131, at ASAE International Meeting, St. Joseph, MI.

Hall, S. G. and R. R. Price. 2003 a. An Autonomous Scare boat to Reduce Bird Predation on Aquaculture Ponds. Louisiana Agriculture.

Hall, S. G. and R. Price. 2003 b. Using Autonomous Robotic Vehicles for Aquacultural and Environmental Applications. Presented as Paper number 03-202, at CSAE Annual Meeting, Montreal, Canada.

Hall, S. G. and R. R. Price. 2003 c. Mobile Semi-Autonomous Robotic Vehicles Improve Aquacultural Ventures by Reducing Bird Predation and Improving Water Quality Monitoring. Abstract, Proceedings of the World Aquaculture Society, Louisville, KY.

Hall, S. G., R. R. Price, and N. Mandhani. 2004. Use of Autonomous Vehicles for Drinking Water Monitoring and Management in an Urban Environment. Presented as Paper number 047053, at ASAE/CSAE International Meeting, St. Joseph, MI.

Hall, S. G., N. Mandhani, A. Mudgundi, and R. R. Price. 2005. Autonomous Vehicle Measurement and Analysis of Water Quality. Proceedings of the Institute of Biological Engineering, Pp. xx-xx.

Hemming, J. and T. Rath. 2001. Computer vision-based Weed Identification under field Conditions using Controlled Lighting. Journal of Agricultural Engineering Research, Vol 78, No 3, Pp 223-243.

Kim, S. and T. Schatzki. 2001. Detection of Pinholes in Almonds through X-Ray Imaging. Transactions of the ASAE, Vol 44, No 4, Pp 997-1003.

Kise, M., N. Nobura, I. Kasunobu, and T. Hideo. 2002. Enhancement of Turning Accuracy by Path Planning for Robot Tractor. Proceedings of the ASAE Conference Chicago, Illinois, USA, Publication number 701P0502, Pp 398-404.

Lee, C. H., S. H. Lee, and H. H. wang. 2001. Automatic Lean Tissue Generation of Carcass Beef via Color Computer Vision. Presented as Paper number 016122 at ASAE conference, Sacramento, California.

Leemans, V., H. Magein, and M. F. Destain. 1999. Defect Segmentation on 'Jonagold' Apples using Color Vision and a Bayesian Classification Method. Computers and Electronics in Agriculture, Vol 23, Pp 43-53.

Lezoray, O., A. Elmoataz, and H. Cardot. 2003. A Color Object Recognition Scheme: Application to Cellular Sorting. Machine vision and Applications, Vol 14, Pp 166-171.

Littauer, G. A., J. F. Glahn, D. S. Reinhold, and M. W. Brunson. 1997. Control of Bird Predation at Aquaculture Facilities: Strategies and cost estimates. Southern Regional Aquaculture Center Publication No 402, Mississippi State Cooperative Extension Service, Mississippi State.

MathWorks. 2005. Website: Image Processing Tool Box (<http://www.mathworks.com/applications/imageprocessing/>)

Migratory Bird Treaty Act. 1918. Online document: Migratory Bird Treaty Act (<http://migratorybirds.fws.gov/intrnltr/mbta/cnvntion.pdf>).

Neethirajan, S., C. Karunakaran, D. S. Jayas, and N. D. G. White. 2004. X ray Image Analysis to Determine Air flow Path in Grain Bults. Presented as Paper number 043080 at ASAE conference, Ottawa, Ontario, Canada.

Nishiwaki, K., T. Togashi, and K. Amaha. 2002. Vision-Based Speed and Yaw Angle Measurement System. Proceedings of the ASAE Conference Chicago, Illinois, USA, Publication number 701P0502, Pp 212-220.

Price, A., G. Taylor, and L. Kleeman. 2000. Online Document: Fast, Robust Color Vision for the Monash Humanoid (<http://www.ecse.monash.edu.au/centres/irrc/LKPubs/humanoid.PDF>).

Price, R. R. and S. G. Hall. 2001. Biorobotics and Autonomous Machinery in Agricultural and Bioproduction Systems. Presented as paper number 013131 at ASAE conference, Sacramento, California.

Price, R. R. and S.G. Hall. 2002. Development of an Autonomous Boat for Bird Reduction on Aquaculture Ponds. Presented as Paper number 023110 at ASAE.

Ruiz L. A., E. Molto, F. Juste, F. Pla, and R. Valiente. 1996. Location and Characterization of the Stem-Calyx Area on Oranges by Computer Vision. Journal of Agricultural Engineering Research, Vol 64, Pp 165-172.

Sural, S., G. Qian, and S. Pramanik. 2002. Online Document: Segmentation and Histogram Generation Using the HSV Color Space for Image Retrieval (<http://www.cse.msu.edu/~pramanik/research/papers/2002Papers/icip.hsv.pdf>), Pp 589-592.

Tao, Y., Z. Chen, H. Jing, and J. Walker. 2001. Internal Inspection of Deboned Poultry Using X-Ray Imaging and Adaptive Thresholding. Transactions of the ASAE Vol 44, No 4, Pp 1005-1009.

Thiang., A. T. Guntoro, and R. Lim. 2001. Online Document: Type of Vehicle Recognition Using Template Matching Method ([http://faculty.petra.ac.id/thiang/download/paper/Pengenalan\\_Mobil\\_P017.pdf](http://faculty.petra.ac.id/thiang/download/paper/Pengenalan_Mobil_P017.pdf)).

Xinwen, Y., Z. Shen, and S. Ninomiya. 2002. Online Document: Measuring Geometrical Features of Insect specimens using Image Analysis (<http://www.jsai.or.jp/afita/afita-conf/2002/part8/p591.pdf>), Pp 591-595.



## **VITA**

Uma Nadimpalli was born on 25<sup>th</sup> December 1980 in Kakinada, India. She finished her high school education in first class from Kakinada Public School, Kakinada, in 1996. She joined the Andhra University College of Engineering in 1998 for a Bachelor of Engineering degree in the Department of Electronics and Communication Engineering. She graduated in first class with distinction in 2002. She joined Louisiana State University in January 2003 for a master's in biological and agricultural engineering. She is currently working on "Image Processing Techniques to Identify Predatory Birds in Aquacultural Settings" under the guidance of Dr. Randy Price and Dr. Steven Hall, Associate Professors, Department of Biological and Agricultural Engineering, Louisiana State University.